

Recombinant EpCAM / CD326 (Epithelial Marker) Antibody

Rabbit Monoclonal Antibody [Clone EGP40/8191R]

| Catalog No | Format | Size |
|------------------|--|--------|
| 4072-RBM37-P0 | Purified Ab with BSA and Azide at 200ug/ml | 20 ug |
| 4072-RBM37-P1 | Purified Ab with BSA and Azide at 200ug/ml | 100 ug |
| 4072-RBM37-P1ABX | Purified Ab WITHOUT BSA or Azide at 1.0mg/ml | 100 ug |

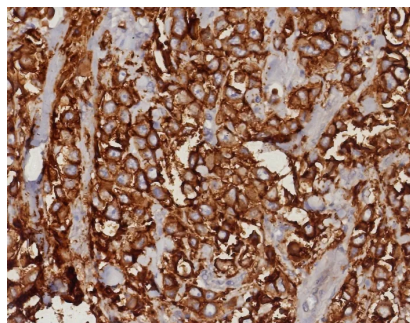
| Applications | Tested Dillution | Note |
|----------------------------|------------------|---|
| Immunohistochemistry (IHC) | 1-2ug/ml | 30 min at RT. Staining of formalin-fixed tissues requires heating tissue sections in 10mM Tris with 1mM EDTA, pH 9.0, for 45 min at 95°C followed by cooling at RT for 20 minutes |
| Western Blot (WB) | 2-4ug/ml | |

Product Details

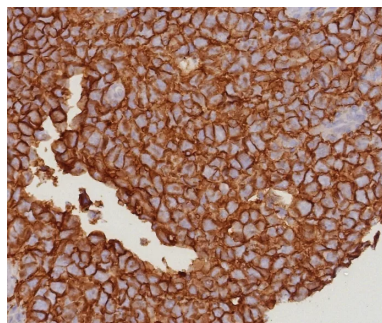
| | |
|-------------------------------|--|
| Clone | EGP40/8191R |
| Immunogen | Recombinant fragment (around aa100-224) of the human EpCAM protein (exact sequence is proprietary) |
| Host | Rabbit |
| Clonality | Monoclonal |
| Isotype / Light Chain | IgG / Kappa |
| Mol. Weight of Antigen | 34.93kDa |
| Cellular Localization | Cell junction, Lateral cell membrane, Tight junction |
| Species Reactivity | Guinea Pig, Human |
| Positive Control | Human breast tumor. Human Lung, Human Intestine, Guinea pig Lung or Guinea pig Intestine |

*Optimal dilution for a specific application should be determined.

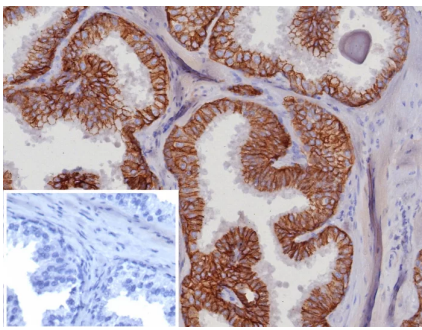
Product Images for Recombinant EpCAM / CD326 (Epithelial Marker) Antibody



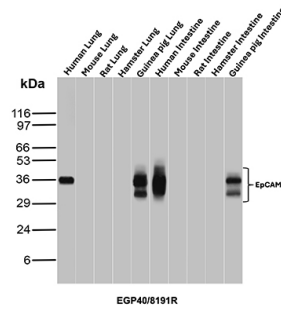
Formalin-fixed, paraffin-embedded human mammary carcinoma stained with EpCAM Rabbit Recombinant Monoclonal Antibody (EGP40/8191R). HIER: Tris/EDTA, pH9.0, 45min. 2: HRP-polymer, 30min. DAB, 5min.



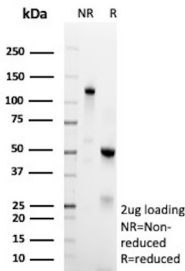
IHC analysis of formalin-fixed, paraffin-embedded human bladder. EpCAM Rabbit Recombinant Monoclonal Antibody (EGP40/8191R). HIER: Tris/EDTA, pH9.0, 45min. 2: HRP-polymer, 30min. DAB, 5min.



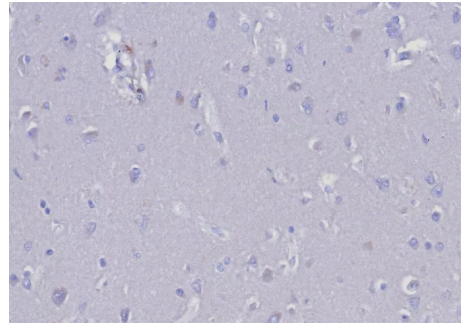
IHC analysis of formalin-fixed, paraffin-embedded human prostate carcinoma. EpCAM Rabbit Recombinant Monoclonal Antibody (EGP40/8191R). Inset: PBS instead of primary antibody; secondary only negative control.



Western blot analysis of (1) human lung, (2) mouse lung, (3) rat lung, (4) hamster lung, (5) guinea pig lung, (6) human intestine, (7) mouse intestine, (8) rat intestine, (9) hamster intestine and (10) guinea pig intestine tissue lysates using EpCAM Recombinant Rabbit Monoclonal Antibody (EGP40/8191R).



SDS-PAGE Analysis of Purified EpCAM Recombinant Rabbit Antibody (EGP40/8191R). Confirmation of Purity and Integrity of Antibody.



IHC analysis of formalin-fixed, paraffin-embedded human tonsil. Negative tissue control using EGP40/8191R at 2ug/ml in PBS for 30min RT. HIER: Tris/EDTA, pH9.0, 45min. 2: HRP-polymer, 30min. DAB, 5min.

Specificity & Comments

Epitope of this MAb is mapped between aa 202-212 of EGP40, which is a 40-43kDa transmembrane epithelial glycoprotein, also identified as epithelial specific antigen (ESA), or epithelial cellular adhesion molecule (Ep-CAM). It is expressed on baso-lateral cell surface in most simple epithelia and a vast majority of carcinomas. Antibody to Ep-CAM has been used to distinguish adenocarcinoma from pleural mesothelioma and hepatocellular carcinoma. This antibody is also useful in distinguishing serous carcinomas of the ovary from mesothelioma.

Limitations and Warranty

This antibody is available for research use only and is not approved for use in diagnosis. There are no warranties, expressed or implied, which extend beyond this description. Company is not liable for any personal injury or economic loss resulting from this product.

Supplied As

200ug/ml of Ab produced in a mammalian-based expression system. Prepared in 10mM PBS with 0.05% BSA & 0.05% azide. Also available WITHOUT BSA & azide at 1.0mg/ml.

Storage and Stability

Antibody with azide - store at 2 to 8 °C. Antibody without azide - store at -20 to -80 °C. Antibody is stable for 24 months. Non-hazardous. No MSDS required.