

## Cytokeratin 14 (KRT14) (Squamous Cell Marker) Antibody

Mouse Monoclonal Antibody [Clone KRT14/6961]

| Catalog No       | Format  | Size   |
|------------------|---|--------|
| 3861-MSM21-P0    | Purified Ab with BSA and Azide at 200ug/ml    | 20 ug  |
| 3861-MSM21-P1    | Purified Ab with BSA and Azide at 200ug/ml    | 100 ug |
| 3861-MSM21-P1ABX | Purified Ab WITHOUT BSA and Azide at 1.0mg/ml | 100 ug |

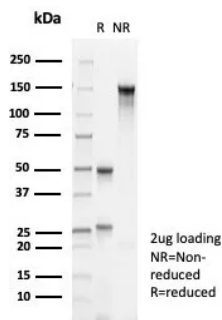
| Applications               | Tested Dillution | Note  |
|----------------------------|------------------|---|
| Immunohistochemistry (IHC) | 1-2ug/ml         | 30 min at RT. Staining of formalin-fixed tissues requires heating tissue sections in 10mM Tris with 1mM EDTA, pH 9.0, for 45 min at 95°C followed by cooling at RT for 20 minutes |
| Western Blot (WB)          | 2-4ug/ml         |   |

### Product Details

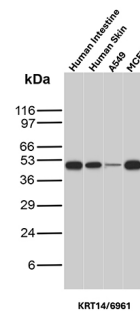
|                               |  |
|-------------------------------|--|
| <b>Clone</b>                  | KRT14/6961   |
| <b>Gene Name</b>              | KRT14  |
| <b>Immunogen</b>              | Recombinant human KRT14 fragment (around aa351-472) (exact sequence is proprietary)        |
| <b>Host</b>                   | Mouse  |
| <b>Clonality</b>              | Monoclonal   |
| <b>Isotype / Light Chain</b>  | IgG1 / Kappa   |
| <b>Mol. Weight of Antigen</b> | ~50kDa   |
| <b>Cellular Localization</b>  | Cytoplasm  |
| <b>Species Reactivity</b>     | Human  |
| <b>Positive Control</b>       | A431 or HeLa cells. Human prostate, skin or squamous cell carcinoma. Intestine, A549, MCF7 |

\*Optimal dilution for a specific application should be determined.

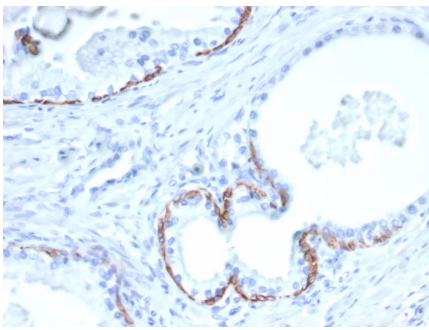
### Product Images for Cytokeratin 14 (KRT14) (Squamous Cell Marker) Antibody



SDS-PAGE Analysis of Purified Keratin 14 Mouse Monoclonal Antibody (KRT14/6961). Confirmation of Purity and Integrity of Antibody.



Western blot analysis of Human Intestine, Human Skin, A549 and MCF7 lysates using Cytokeratin 14 Mouse Monoclonal Antibody (KRT14/6961).



Formalin-fixed, paraffin-embedded human prostate stained with Keratin 14 Mouse Monoclonal Antibody (KRT14/6961). HIER: Tris/EDTA, pH9.0, 45min. 2°C: HRP-polymer, 30min. DAB, 5min.

### Specificity & Comments

Cytokeratin 14 (CK14) belongs to the type I (or A or acidic) subfamily of low molecular weight keratins and exists in combination with keratin 5 (type II or B or basic). CK14 is found in basal cells of squamous epithelia, some glandular epithelia, myoepithelium, and mesothelial cells. Anti-CK14 is useful in differentiating squamous cell carcinomas from poorly differentiated epithelial tumors. Anti-CK14 is one of the specific basal markers for distinguishing between basal and non-basal subtypes of breast carcinomas. Anti-CK14 is also a good marker for differentiation of intraductal from invasive salivary duct carcinoma by the positive staining of basal cells surrounding the in-situ neoplasm as well as for differentiation of benign prostate from prostate carcinoma. Furthermore, this antibody has been useful in separating oncocytic tumors of the kidney from its renal mimics, and in identifying metaplastic carcinomas of the breast.

### Limitations and Warranty

This antibody is available for research use only and is not approved for use in diagnosis. There are no warranties, expressed or implied, which extend beyond this description. Company is not liable for any personal injury or economic loss resulting from this product.

### Supplied As

200ug/ml of Ab purified from Bioreactor Concentrate by Protein A/G. Prepared in 10mM PBS with 0.05% BSA & 0.05% azide. Also available WITHOUT BSA & azide at 1.0mg/ml.

### Storage and Stability

Antibody with azide - store at 2 to 8°C. Antibody without azide - store at -20 to -80°C. Antibody is stable for 24 months. Non-hazardous. No MSDS required.

### Research Areas

Basal Cell Marker, Developmental Biology