

## Recombinant Cytokeratin 6A (KRT6A) (Basal Cell Marker) Antibody

Rabbit Monoclonal Antibody [Clone KRT6/8120R]

Catalog No	Format	Size
3853-RBM10-P0	Purified Ab with BSA and Azide at 200ug/ml	20 ug
3853-RBM10-P1	Purified Ab with BSA and Azide at 200ug/ml	100 ug
3853-RBM10-P1ABX	Purified Ab WITHOUT BSA and Azide at 1.0mg/ml	100 ug

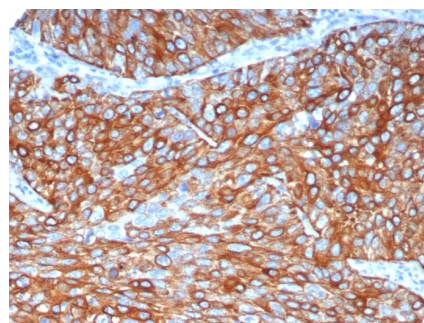
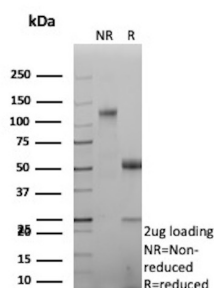
Applications	Tested Dillution	Note
Immunohistochemistry (IHC)	1-2ug/ml	30 min at RT. Staining of formalin-fixed tissues requires heating tissue sections in 10mM Tris with 1mM EDTA, pH 9.0, for 45 min at 95°C followed by cooling at RT for 20 minutes

### Product Details

Clone	KRT6/8120R
Gene Name	KRT6A
Immunogen	Recombinant fragment of human KRT6 (exact sequence is proprietary)
Host	Rabbit
Clonality	Monoclonal
Isotype / Light Chain	IgG / Kappa
Mol. Weight of Antigen	56kDa
Cellular Localization	Cytoplasm
Species Reactivity	Human
Positive Control	HeLa cells. Human tonsil or basal cell carcinoma (BCC).

*\*Optimal dilution for a specific application should be determined.*

### Product Images for Recombinant Cytokeratin 6A (KRT6A) (Basal Cell Marker) Antibody



SDS-PAGE Analysis of Purified Keratin, type II cytoskeletal 6A Recombinant Rabbit Monoclonal Antibody (KRT6/8120R). Confirmation of Purity and Integrity of Antibody.

Formalin-fixed, paraffin-embedded human lung adenocarcinoma stained with Cytokeratin 6A Recombinant Rabbit Monoclonal Antibody (KRT6/8120R). HIER: Tris/EDTA, pH9.0, 45min. 2: HRP-polymer, 30min. DAB, 5min.

### Specificity & Comments

Cytokeratin 6 is an epidermis-specific type I keratin involved in wound healing. Involved in the activation of follicular keratinocytes after wounding, while it does not play a major role in keratinocyte proliferation or migration. This protein always paired with the type-I keratin K16. Cytokeratin 6 have been identified in epidermis only in samples from plantar glabrous skin while in hairy skin this keratin appeared to be absent in interfollicular epidermis but were clearly present in hair follicle outer root sheath, and this protein also consistently expressed in non-keratinizing stratified squamous epithelia. Among tumors, cytokeratin 6 is typically and strongly expressed in squamous cell carcinomas of different sites, preferentially in inner, maturing layers of the tumor cell nests. Cytokeratin 6 is always used with cytokeratin 5 and is a useful aid for classification of epithelioid mesotheliomas.

---

### Limitations and Warranty

This antibody is available for research use only and is not approved for use in diagnosis. There are no warranties, expressed or implied, which extend beyond this description. Company is not liable for any personal injury or economic loss resulting from this product.

---

### Supplied As

200ug/ml of Ab purified from Bioreactor Concentrate by Protein A/G. Prepared in 10mM PBS with 0.05% BSA & 0.05% azide. Also available WITHOUT BSA & azide at 1.0mg/ml.

---

### Storage and Stability

Antibody with azide - store at 2 to 8°C. Antibody without azide - store at -20 to -80°C. Antibody is stable for 24 months. Non-hazardous. No MSDS required.

---

### Research Areas

Developmental Biology

---