

EZH2 / KMT6 Antibody

Mouse Monoclonal Antibody [Clone EZH2/6988]

Catalog No	Format	Size
2146-MSM8-P0	Purified Ab with BSA and Azide at 200ug/ml	20 ug
2146-MSM8-P1	Purified Ab with BSA and Azide at 200ug/ml	100 ug
2146-MSM8-P1ABX	Purified Ab WITHOUT BSA and Azide at 1.0mg/ml	100 ug

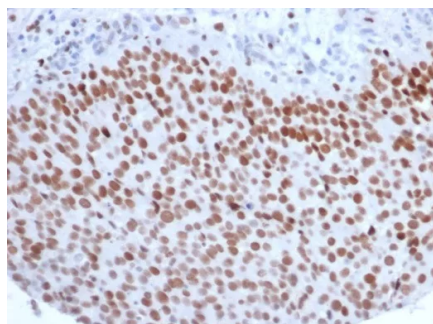
Applications	Tested Dillution	Note
Flow Cytometry (Flow)	1-2ug/million cells	
Immunofluorescence (IF)	1-3ug/ml	
Immunohistochemistry (IHC)	1-2ug/ml	30 min at RT. Staining of formalin-fixed tissues requires heating tissue sections in 10mM Tris with 1mM EDTA, pH 9.0, for 45 min at 95°C followed by cooling at RT for 20 minutes
Western Blot (WB)	2-4ug/ml	

Product Details

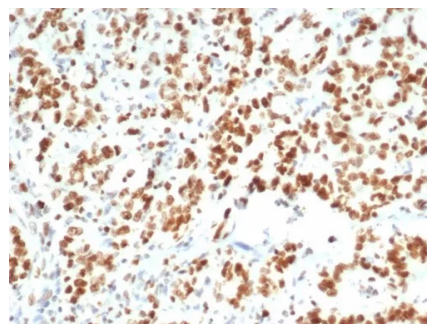
Clone	EZH2/6988
Gene Name	EZH2
Immunogen	Recombinant fragment (around aa300-550) of human EZH2 protein (exact sequence is proprietary)
Host	Mouse
Clonality	Monoclonal
Isotype / Light Chain	IgG / Kappa
Mol. Weight of Antigen	81-102kDa
Cellular Localization	Nucleus.
Species Reactivity	Human
Positive Control	HeLa MCF7 testis or prostate tissue. U-2 OS or HEK-293 whole cell lysates. Human tonsil

*Optimal dilution for a specific application should be determined.

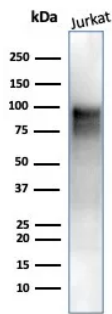
Product Images for EZH2 / KMT6 Antibody



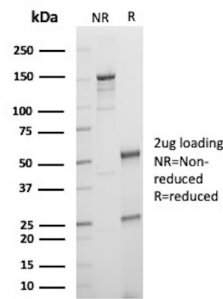
Formalin-fixed, paraffin-embedded human bladder carcinoma stained with EZH2 / KMT6 Mouse Monoclonal Antibody (EZH2/6988). HIER: Tris/EDTA, pH9.0, 45min. 2: HRP-polymer, 30min. DAB, 5min.



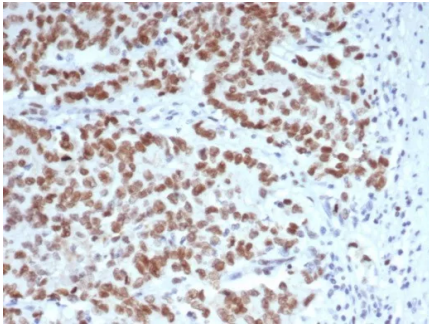
Formalin-fixed, paraffin-embedded human bladder carcinoma stained with EZH2 / KMT6 Mouse Monoclonal Antibody (EZH2/6988). HIER: Tris/EDTA, pH9.0, 45min. 2: HRP-polymer, 30min. DAB, 5min.



Western Blot Analysis of Jurkat cell lysate using EZH2 / KMT6 Mouse Monoclonal Antibody (EZH2/6988).



SDS-PAGE Analysis of Purified Histone-lysine N-methyltransferase EZH2 Mouse Monoclonal Antibody (EZH2/6988). Confirmation of Purity and Integrity of Antibody.



FFPE human Lynch syndrome colon carcinoma stained with EZH2 / KMT6 Mouse Monoclonal Antibody (EZH2/6988). HIER: Tris/EDTA, pH9.0, 45min. 2: HRP-polymer, 30min. DAB, 5min.

Specificity & Comments

This gene encodes a member of the Polycomb-group (PcG) family. PcG family members form multimeric protein complexes, which are involved in maintaining the transcriptional repressive state of genes over successive cell generations. This protein associates with the embryonic ectoderm development protein, the VAV1 oncoprotein, and the X-linked nuclear protein. This protein may play a role in the hematopoietic and central nervous systems. Multiple alternatively spliced transcript variants encoding distinct isoforms have been identified for this gene.

Supplied As

200ug/ml of Ab purified from Bioreactor Concentrate by Protein A/G. Prepared in 10mM PBS with 0.05% BSA & 0.05% azide. Also available WITHOUT BSA & azide at 1.0mg/ml.

Storage and Stability

Antibody with azide - store at 2 to 8°C. Antibody without azide - store at -20 to -80°C. Antibody is stable for 24 months. Non-hazardous. No MSDS required.

Research Areas

Cardiovascular, Developmental Biology, Infectious Disease, Neural Stem Cells, Nuclear Marker, Signal Transduction, Transcription Factors

Limitations and Warranty

This antibody is available for research use only and is not approved for use in diagnosis. There are no warranties, expressed or implied, which extend beyond this description. Company is not liable for any personal injury or economic loss resulting from this product.