

Recombinant CD4 (T-Helper/Inducer Cell Marker) Antibody

Rabbit Monoclonal Antibody [Clone CD4/8203R]

Catalog No	Format	Size
920-RBM15-P0	Purified Ab with BSA and Azide at 200ug/ml	20 ug
920-RBM15-P1	Purified Ab with BSA and Azide at 200ug/ml	100 ug
920-RBM15-P1ABX	Purified Ab WITHOUT BSA and Azide at 1.0mg/ml	100 ug

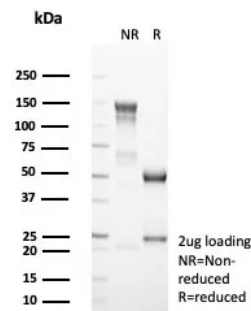
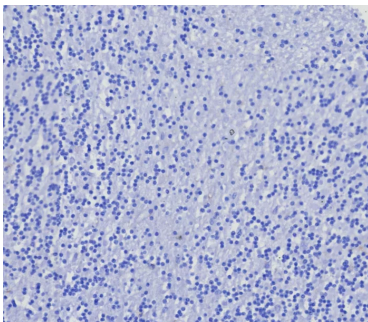
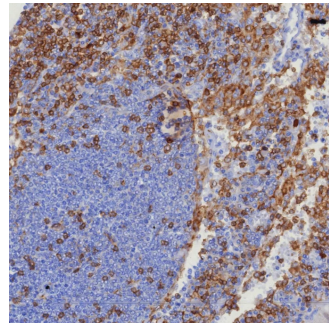
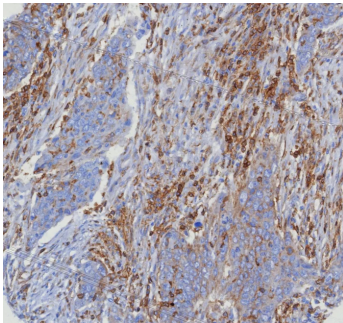
Applications	Tested Dillution	Note
Immunohistochemistry (IHC)	1-2ug/ml	30 min at RT. Staining of formalin-fixed tissues requires heating tissue sections in 10mM Tris with 1mM EDTA, pH 9.0, for 45 min at 95°C followed by cooling at RT for 20 minutes
Western Blot (WB)	2-4ug/ml	

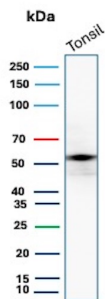
Product Details

Clone	CD4/8203R
Gene Name	CD4
Immunogen	Recombinant fragment (around aa 200-400) of human CD4 protein (exact sequence is proprietary)
Host	Rabbit
Clonality	Monoclonal
Isotype / Light Chain	IgG / Kappa
Mol. Weight of Antigen	55kDa
Cellular Localization	Cell surface.
Species Reactivity	Human
Positive Control	CCRF-CEM or HL-60. Human lymph node or tonsil. Human peripheral blood mononuclear cells (PBMCs)

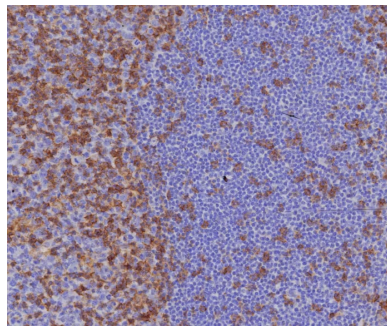
*Optimal dilution for a specific application should be determined.

Product Images for Recombinant CD4 (T-Helper/Inducer Cell Marker) Antibody





Western Blot Analysis of human tonsil tissue lysate using CD4 Recombinant Rabbit Monoclonal Antibody (CD4/8203R).



Specificity & Comments

Recognizes a protein of 55kDa, identified as CD4. It is a membrane glycoprotein of T lymphocytes that interacts with major histocompatibility complex class II antigens and is also a receptor for the human immunodeficiency virus. This protein is expressed not only in T lymphocytes, but also in B cells, macrophages, and granulocytes. It is also expressed in specific regions of the brain. The protein functions to initiate or augment the early phase of T-cell activation, and may function as an important mediator of indirect neuronal damage in infectious and immune-mediated diseases of the central nervous system. The majority of peripheral T-cell lymphomas are derived from the T-helper/regulatory cell subset so that most mature T-cell neoplasms are CD4+/CD8-. Anti-CD4 is used in the immunohistochemical staining of lymphoproliferative disorders to evaluate tumors with CD4 aberrant expression.

Limitations and Warranty

This antibody is available for research use only and is not approved for use in diagnosis. There are no warranties, expressed or implied, which extend beyond this description. Company is not liable for any personal injury or economic loss resulting from this product.

Supplied As

200ug/ml of Ab purified from Bioreactor Concentrate by Protein A/G. Prepared in 10mM PBS with 0.05% BSA & 0.05% azide. Also available WITHOUT BSA & azide at 1.0mg/ml.

Storage and Stability

Antibody with azide - store at 2 to 8°C. Antibody without azide - store at -20 to -80°C. Antibody is stable for 24 months. Non-hazardous. No MSDS required.

Research Areas

AKT Signaling, Cardiovascular, Cytokine Signaling, Hematopoietic Stem Cells, Immunology, Infectious Disease