

## S100P / MIG9 Antibody

Mouse Monoclonal Antibody [Clone S100P/7373]

Catalog No	Format	Size
6286-MSM3-P0	Purified Ab with BSA and Azide at 200ug/ml	20 ug
6286-MSM3-P1	Purified Ab with BSA and Azide at 200ug/ml	100 ug
6286-MSM3-P1ABX	Purified Ab WITHOUT BSA and Azide at 1.0mg/ml	100 ug

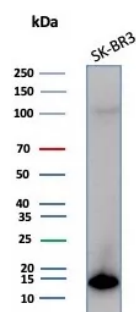
Applications	Tested Dillution	Note
Immunohistochemistry (IHC)	1-2ug/ml	30 min at RT. Staining of formalin-fixed tissues requires heating tissue sections in 10mM Tris with 1mM EDTA, pH 9.0, for 45 min at 95°C followed by cooling at RT for 20 minutes
Western Blot (WB)	2-4ug/ml	

### Product Details

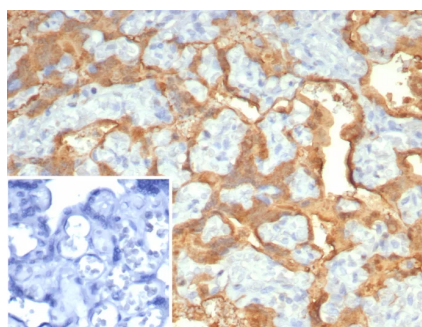
<b>Clone</b>	S100P/7373
<b>Gene Name</b>	S100P
<b>Immunogen</b>	Recombinant fragment (around aa1-95) of human MIG9 protein (exact sequence is proprietary)
<b>Host</b>	Mouse
<b>Clonality</b>	Monoclonal
<b>Isotype / Light Chain</b>	IgG2b / Kappa
<b>Mol. Weight of Antigen</b>	10kDa
<b>Cellular Localization</b>	Nucleus. Cytoplasm. Colocalizes with S100PBP in the nucleus.
<b>Species Reactivity</b>	Human
<b>Positive Control</b>	Human pancreatic adenocarcinoma, placenta or spleen tissue. SK-BR3 cells.

\*Optimal dilution for a specific application should be determined.

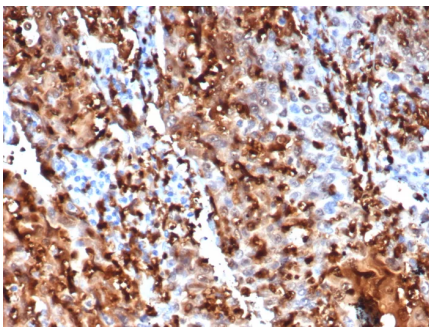
### Product Images for S100P / MIG9 Antibody



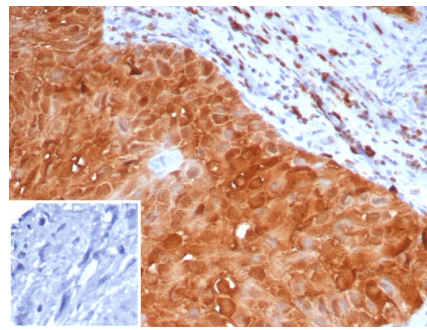
Western blot analysis of SK-BR3 cell lysate using S100P Mouse Monoclonal Antibody (S100P/7373).



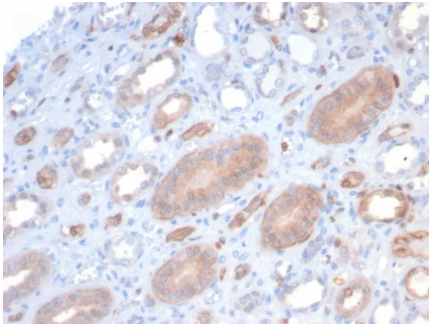
Formalin-fixed, paraffin-embedded human placenta stained with S100P Mouse Monoclonal Antibody (S100P/7373). Inset: PBS instead of primary antibody; secondary only negative control.



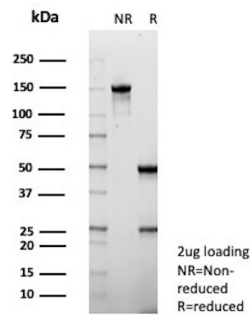
Formalin-fixed, paraffin-embedded human lung cancer stained with S100P Mouse Monoclonal Antibody (S100P/7373). HIER: Tris/EDTA, pH9.0, 45min. 2°: HRP-polymer, 30min. DAB, 5min.



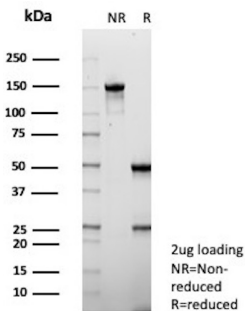
Formalin-fixed, paraffin-embedded human bladder stained with S100P Mouse Monoclonal Antibody (S100P/7373). Inset: PBS instead of primary antibody; secondary only negative control.



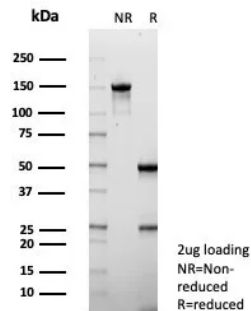
Formalin-fixed, paraffin-embedded human kidney stained with S100P Mouse Monoclonal Antibody (S100P/7373). HIER: Tris/EDTA, pH9.0, 45min. 2°: HRP-polymer, 30min. DAB, 5min.



SDS-PAGE Analysis of Purified Protein S100-P Mouse Monoclonal Antibody (S100P/7373). Confirmation of Purity and Integrity of Antibody.



SDS-PAGE Analysis of Purified Protein S100-P Mouse Monoclonal Antibody (S100P/7373). Confirmation of Purity and Integrity of Antibody.



SDS-PAGE Analysis of Purified S100P Mouse Monoclonal Antibody (S100P/7373). Confirmation of Purity and Integrity of Antibody.

## Specificity & Comments

S100P is a 95-amino-acid protein and a member of the S100 family. S100P has been shown to mediate tumor growth, metastasis and invasion through the binding of Ca<sup>2+</sup> ions, receptor for advanced glycation end products, cytoskeletal protein ezrin, calcyclin-binding protein/Siah-1-interacting protein and cathepsin D. S100P highly expressed in human placenta, gastrointestinal tract, and esophageal mucosa, but always negative in pancreas and liver. Overexpression of S100P has been detected in several cancers such as breast, colon, prostate, pancreatic and lung carcinomas, and the protein has been functionally implicated in carcinogenic processes. S100P could potentially serve as diagnostic marker, prognostic/predictive indicator and therapy target for different carcinomas.

## Limitations and Warranty

This antibody is available for research use only and is not approved for use in diagnosis. There are no warranties, expressed or implied, which extend beyond this description. Company is not liable for any personal injury or economic loss resulting from this product.

## Supplied As

200ug/ml of Ab purified from Bioreactor Concentrate by Protein A/G. Prepared in 10mM PBS with 0.05% BSA & 0.05% azide. Also available WITHOUT BSA & azide at 1.0mg/ml.

## Storage and Stability

Antibody with azide - store at 2 to 8°C. Antibody without azide - store at -20 to -80°C. Antibody is stable for 24 months. Non-hazardous. No MSDS required.

## Research Areas

Immunology, Nuclear Marker