

Recombinant CD38 (ADP Ribosyl Cyclase I) Antibody

Mouse Monoclonal Antibody [Clone rCD38/6982]

Catalog No	Format	Size
952-MSM12-P0	Purified Ab with BSA and Azide at 200ug/ml	20 ug
952-MSM12-P1	Purified Ab with BSA and Azide at 200ug/ml	100 ug
952-MSM12-P1ABX	Purified Ab WITHOUT BSA or Azide at 1.0mg/ml	100 ug

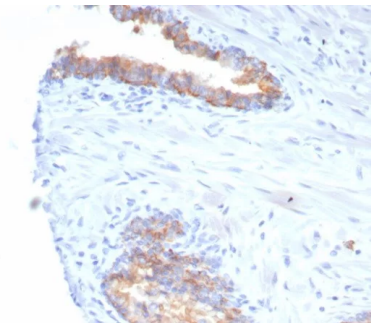
Applications	Tested Dillution	Note
Immunohistochemistry (IHC)	1-2ug/ml	30 min at RT. Staining of formalin-fixed tissues requires heating tissue sections in 10mM Tris with 1mM EDTA, pH 9.0, for 45 min at 95°C followed by cooling at RT for 20 minutes
Western Blot (WB)	2-4ug/ml	

Product Details

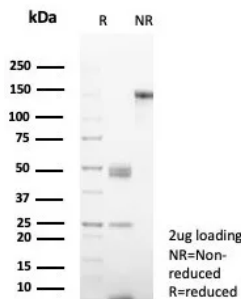
Clone	rCD38/6982
Immunogen	Recombinant fragment (around aa287-300) of the human CD38 protein (exact sequence is proprietary)
Host	Mouse
Clonality	Monoclonal
Isotype / Light Chain	IgG1 / Kappa
Mol. Weight of Antigen	34.33kDa
Cellular Localization	Cell surface, Membrane
Species Reactivity	Human
Positive Control	Human tonsil spleen or skin.

*Optimal dilution for a specific application should be determined.

Product Images for Recombinant CD38 (ADP Ribosyl Cyclase I) Antibody



IHC analysis of formalin-fixed, paraffin-embedded human prostate carcinoma. Strong cytoplasmic and membranous staining using rCD38/6982 at 2ug/ml in PBS for 30min RT. HIER: Tris/EDTA, pH9.0, 45min. 2: HRP-polymer, 30min. DAB, 5min.



SDS-PAGE Analysis CD38 Recombinant Mouse Monoclonal Antibody (rCD38/6982). Confirmation of Purity and Integrity of Antibody.

Specificity & Comments

CD38 is a type II transmembrane glycoprotein that is present on early B- and T-cell lineages and activated B- and T-cells but is absent from most mature resting peripheral lymphocytes. CD38 is also found on thymocytes, pre-B cells, germinal center B-cells, mitogen-activated T-cells, monocytes and Ig-secreting plasma cells. CD38 is expressed on CD34+ cells. The CD34+CD38- population of hematopoietic stems cells define the most pluripotent cells (e.g. blast colony forming cells).

Supplied As

200ug/ml of Ab produced in a mammalian-based expression system. Prepared in 10mM PBS with 0.05% BSA & 0.05% azide. Also available WITHOUT BSA & azide at 1.0mg/ml.

Storage and Stability

Antibody with azide - store at 2 to 8 °C. Antibody without azide - store at -20 to -80 °C. Antibody is stable for 24 months. Non-hazardous. No MSDS required.

Limitations and Warranty

This antibody is available for research use only and is not approved for use in diagnosis. There are no warranties, expressed or implied, which extend beyond this description. Company is not liable for any personal injury or economic loss resulting from this product.
