

Recombinant Tubulin beta 3 / TUBB3 (Neuronal & Stem Cell Marker) Antibody

Mouse Monoclonal Antibody [Clone rTUBB3/7405]

| Catalog No | Format | Size |
|------------------|---|--------|
| 10381-MSM5-P0 | Purified Ab with BSA and Azide at 200ug/ml | 20 ug |
| 10381-MSM5-P1 | Purified Ab with BSA and Azide at 200ug/ml | 100 ug |
| 10381-MSM5-P1ABX | Purified Ab WITHOUT BSA and Azide at 1.0mg/ml | 100 ug |

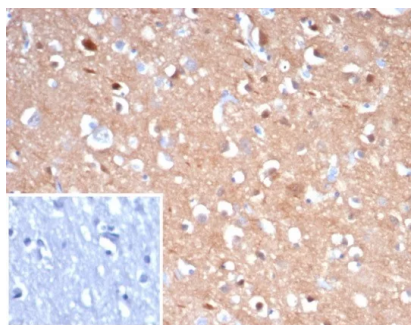
| Applications | Tested Dillution | Note |
|----------------------------|------------------|---|
| Immunohistochemistry (IHC) | 1-2ug/ml | 30 min at RT. Staining of formalin-fixed tissues requires heating tissue sections in 10mM Tris with 1mM EDTA, pH 9.0, for 45 min at 95°C followed by cooling at RT for 20 minutes |
| Western Blot (WB) | 2-4ug/ml | |

Product Details

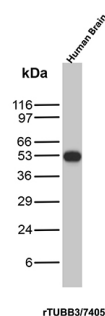
| | |
|-------------------------------|--|
| Clone | rTUBB3/7405 |
| Gene Name | TUBB3 |
| Immunogen | Recombinant fragment (around aa250-450) of human TUBB3 (exact sequence is proprietary) |
| Host | Mouse |
| Clonality | Monoclonal |
| Isotype / Light Chain | IgG1 / Kappa |
| Mol. Weight of Antigen | 55kDa |
| Cellular Localization | Cytoplasm. |
| Species Reactivity | Human |
| Positive Control | brain or testis. PC3 cells. |

*Optimal dilution for a specific application should be determined.

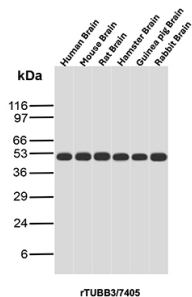
Product Images for Recombinant Tubulin beta 3 / TUBB3 (Neuronal & Stem Cell Marker) Antibody



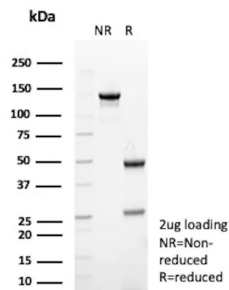
Formalin-fixed, paraffin-embedded human brain stained with Tubulin beta 3 Recombinant Mouse Monoclonal Antibody (rTUBB3/7405). Inset: PBS instead of primary antibody; secondary only negative control.



Western blot analysis of Human Brain lysate using TUBB3 Recombinant Mouse Monoclonal Antibody (rTUBB3/7405).



Western blot analysis of Brain tissue lysates of different species using TUBB3 Recombinant Mouse Monoclonal Antibody (rTUBB3/7405).



SDS-PAGE Analysis Purified TUBB3 Mouse Recombinant Monoclonal Antibody (rTUBB3/7405). Confirmation of Purity and Integrity of Antibody.

Specificity & Comments

This gene encodes a class III member of the beta tubulin protein family. Beta tubulins are one of two core protein families (alpha and beta tubulins) that heterodimerize and assemble to form microtubules. This protein is primarily expressed in neurons and may be involved in neurogenesis and axon guidance and maintenance. Mutations in this gene are the cause of congenital fibrosis of the extraocular muscles type 3. In adults, tubulin beta 3 (TUBB3) is primarily expressed in neurons and is commonly used as a neuronal marker. It plays an important role in neuronal cell proliferation and differentiation.

Supplied As

200ug/ml of Ab produced in HEK293 cell mammalian-based expression system. Prepared in 10mM PBS with 0.05% BSA & 0.05% azide. Also available WITHOUT BSA & azide at 1.0mg/ml.

Storage and Stability

Antibody with azide - store at 2 to 8°C. Antibody without azide - store at -20 to -80°C. Antibody is stable for 24 months. Non-hazardous. No MSDS required.

Research Areas

Cardiovascular, Developmental Biology, Immunology, Infectious Disease, Neuroscience, Signal Transduction

Limitations and Warranty

This antibody is available for research use only and is not approved for diagnosis. There are no warranties, expressed or implied, which extend beyond this description. Company is not liable for any personal injury or economic loss resulting from this product.