

Recombinant Mammaglobin (SCGB2A2) (Breast Cancer Marker) Antibody

Rabbit Monoclonal Antibody [Clone MGB/7980R]

Catalog No	Format	Size
4250-RBM18-P0	Purified Ab with BSA and Azide at 200ug/ml	20 ug
4250-RBM18-P1	Purified Ab with BSA and Azide at 200ug/ml	100 ug
4250-RBM18-P1ABX	Purified Ab WITHOUT BSA and Azide at 1.0mg/ml	100 ug

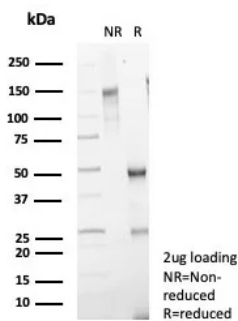
Applications	Tested Dillution	Note
Immunohistochemistry (IHC)	1-2ug/ml	30 min at RT. Staining of formalin-fixed tissues requires heating tissue sections in 10mM Tris with 1mM EDTA, pH 9.0, for 45 min at 95°C followed by cooling at RT for 20 minutes
Western Blot (WB)	2-4ug/ml	

Product Details

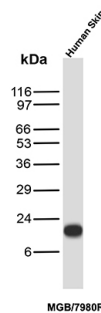
Clone	MGB/7980R
Gene Name	SCGB2A2
Immunogen	Recombinant fragment of human Mammaglobin (SCGB2A2) protein (exact sequence is proprietary)
Host	Rabbit
Clonality	Monoclonal
Isotype / Light Chain	IgG / Kappa
Mol. Weight of Antigen	10.5kDa
Cellular Localization	Cytoplasm.
Species Reactivity	Human
Positive Control	HeLa MCF-7 or T47D cells. Human breast carcinoma. Human Skin.

*Optimal dilution for a specific application should be determined.

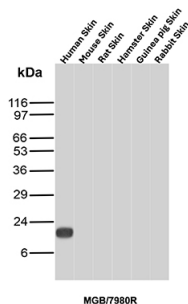
Product Images for Recombinant Mammaglobin (SCGB2A2) (Breast Cancer Marker) Antibody



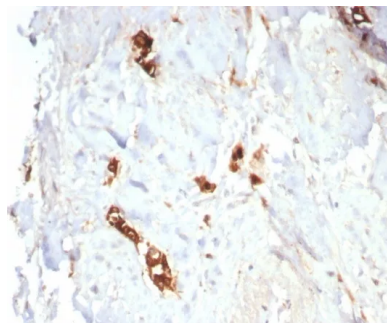
SDS-PAGE Analysis of Purified Mammaglobin Recombinant Rabbit Monoclonal (MGB/7980R). Confirmation of Purity and Integrity of Antibody.



Western Blot Analysis of Human Skin tissue lysate using Mammaglobin Recombinant Rabbit Monoclonal Antibody (MGB/7980R).



Western Blot Analysis of Skin tissue lysate of different species using Mammaglobin Recombinant Rabbit Monoclonal Antibody (MGB/7980R).



Formalin-fixed, paraffin-embedded human lactating breast stained with Mammaglobin Recombinant Rabbit Monoclonal Antibody (MGB/7980R). HIER: Tris/EDTA, pH9.0, 45min. 2°C: HRP-polymer, 30min. DAB, 5min.

Specificity & Comments

Mammaglobin, 10 kDa, is a cytoplasmic protein, a mammary-specific member of the uteroglobin family. It is related to a family of epithelial secretory proteins that includes prostactin and Clara cell protein. Mammaglobin occurs in about 80% of breast carcinomas. The extend is generally larger than that of GCDFP-15. Up to 15% of nonbreast carcinomas (such as stomach, lung, colon, hepatobiliary, thyroid, ovarian, and urothelial carcinomas) have been reported positive, usually only focally. Mammaglobin is a sensitive and fairly specific marker for breast carcinoma. The panel should also include Gross cystic disease fluid protein-15 and Estrogen receptor alpha.

Supplied As

200ug/ml of Ab purified from Bioreactor Concentrate by Protein A/G. Prepared in 10mM PBS with 0.05% BSA & 0.05% azide. Also available WITHOUT BSA & azide at 1.0mg/ml.

Storage and Stability

Antibody with azide - store at 2 to 8°C. Antibody without azide - store at -20 to -80°C. Antibody is stable for 24 months. Non-hazardous. No MSDS required.

Limitations and Warranty

This antibody is available for research use only and is not approved for use in diagnosis. There are no warranties, expressed or implied, which extend beyond this description. Company is not liable for any personal injury or economic loss resulting from this product.