

Recombinant Occludin (OCLN) (Tight Junctions Marker) Antibody

Rabbit Monoclonal Antibody [Clone OCLN/8526R]

Catalog No	Format	Size
100506658-RBM9-P0	Purified Ab with BSA and Azide at 200ug/ml	20 ug
100506658-RBM9-P1	Purified Ab with BSA and Azide at 200ug/ml	100 ug
100506658-RBM9-P1ABX	Purified Ab WITHOUT BSA and Azide at 1.0mg/ml	100 ug

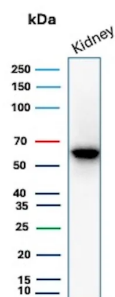
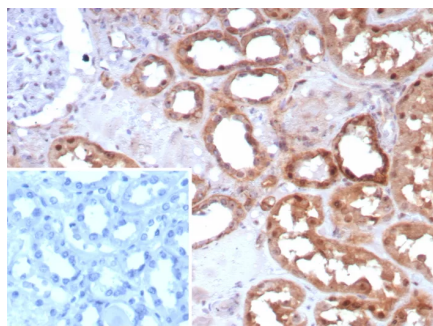
Applications	Tested Dillution	Note
Immunohistochemistry (IHC)	1-2ug/ml	30 min at RT. Staining of formalin-fixed tissues requires heating tissue sections in 10mM Tris with 1mM EDTA, pH 9.0, for 45 min at 95°C followed by cooling at RT for 20 minutes
Western Blot (WB)	2-4ug/ml	

Product Details

Clone	OCLN/8526R
Gene Name	OCLN
Immunogen	Recombinant human Occludin fragment around aa 282-415 (Exact sequence is proprietary)
Host	Rabbit
Clonality	Monoclonal
Isotype / Light Chain	IgG / Kappa
Mol. Weight of Antigen	60-82kDa
Cellular Localization	Cell Surface. Cytoplasm.
Species Reactivity	Human
Positive Control	HepG2 cells. Human kidney.

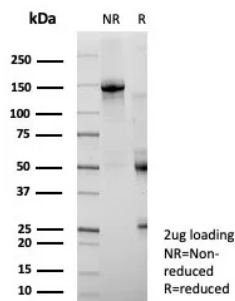
*Optimal dilution for a specific application should be determined.

Product Images for Recombinant Occludin (OCLN) (Tight Junctions Marker) Antibody



Formalin-fixed, paraffin-embedded human kidney stained with Occludin Recombinant Rabbit Monoclonal Antibody (OCLN/8526R). Inset: PBS instead of primary antibody; secondary only negative control.

Western Blot Analysis of human kidney tissue lysate using Occludin Recombinant Rabbit Monoclonal Antibody (OCLN/8526R).



SDS-PAGE Analysis of Purified Occludin Recombinant Rabbit Monoclonal Antibody (OCLN/8526R). Confirmation of Purity and Integrity of Antibody.

Specificity & Comments

Occludin is a tetraspan integral membrane protein in epithelial and endothelial tight junction (TJ) structures that can contain two extracellular loops. The protein exists in a variety of phosphorylated forms. Phosphorylation is involved in regulating both the localization and the function of Occludin. Expression of Occludin is upregulated by polyunsaturated fatty acids, increasing trans-endothelial cell resistance and reducing cellular permeability to large molecules. The level of Occludin varies greatly depending on tissue; in brain tissue, Occludin is highly expressed at cell-cell contact sites. Non-neural tissues show lower expression and discontinuous distribution. Up-regulation of epithelial Occludin may play a role in enhancing paracellular permeability and be related to the damage to the tight junction.

Limitations and Warranty

This antibody is available for research use only and is not approved for use in diagnosis. There are no warranties, expressed or implied, which extend beyond this description. Company is not liable for any personal injury or economic loss resulting from this product.

Supplied As

200ug/ml of Ab purified from Bioreactor Concentrate by Protein A/G. Prepared in 10mM PBS with 0.05% BSA & 0.05% azide. Also available WITHOUT BSA & azide at 1.0mg/ml.

Storage and Stability

Antibody with azide - store at 2 to 8°C. Antibody without azide - store at -20 to -80°C. Antibody is stable for 24 months. Non-hazardous. No MSDS required.

Research Areas

BBB VCAM-1 Signaling, Transcription Factors