

Recombinant VEGF (Vascular Endothelial Growth Factor) Antibody

Rabbit Monoclonal Antibody [Clone VEGFA/7758R]

Catalog No	Format	Size
7422-RBM8-P0	Purified Ab with BSA and Azide at 200ug/ml	20 ug
7422-RBM8-P1	Purified Ab with BSA and Azide at 200ug/ml	100 ug
7422-RBM8-P1ABX	Purified Ab WITHOUT BSA and Azide at 1.0mg/ml	100 ug

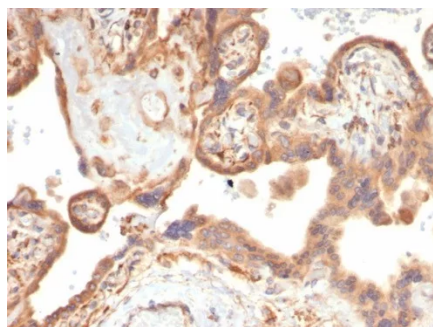
Applications	Tested Dillution	Note
Immunohistochemistry (IHC)	1-2ug/ml	30 min at RT. Staining of formalin-fixed tissues requires heating tissue sections in 10mM Tris with 1mM EDTA, pH 9.0, for 45 min at 95°C followed by cooling at RT for 20 minutes
Western Blot (WB)	2-4ug/ml	

Product Details

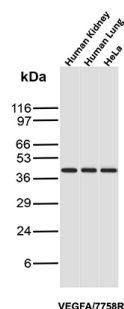
Clone	VEGFA/7758R
Gene Name	VEGFA
Immunogen	Recombinant fragment (around aa1-200) of human VEGFA protein (exact sequence is proprietary)
Host	Rabbit
Clonality	Monoclonal
Isotype / Light Chain	IgG1 / Kappa
Mol. Weight of Antigen	19-22kDa (reducing) and 38kDa-44kDa (non-reducing)
Cellular Localization	Cytoplasm. Cell surface. Extracellular (secreted).
Species Reactivity	Human
Positive Control	breast or ovarian carcinomas. Tumor cells in astrocytomas, Kidney, Lung, HeLa

**Optimal dilution for a specific application should be determined.*

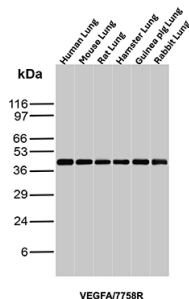
Product Images for Recombinant VEGF (Vascular Endothelial Growth Factor) Antibody



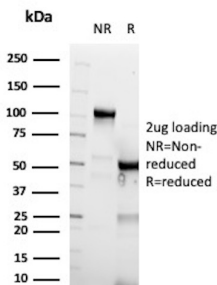
Formalin-fixed, paraffin-embedded human placenta stained with VEGF Recombinant Rabbit Monoclonal Antibody (VEGFA/7758R). HIER: Tris/EDTA, pH9.0, 45min. 2°C: HRP-polymer, 30min. DAB, 5min.



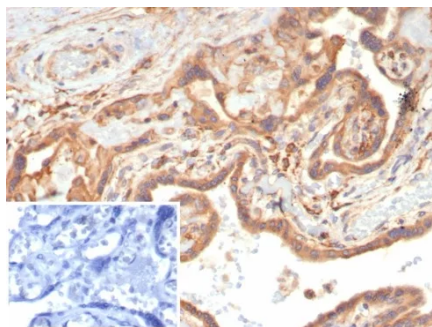
Western Blot Analysis of Human Kidney, Human Lung tissue and HeLa lysates using VEGFA Recombinant Rabbit Monoclonal Antibody (VEGFA/7758R).



Western Blot Analysis of Lung tissue lysates of different species using VEGFA Recombinant Rabbit Monoclonal Antibody (VEGFA/7758R).



SDS-PAGE Analysis of Purified Vascular endothelial growth factor A, long form| N-VEGF | VEGFA Recombinant Rabbit Monoclonal Antibody (VEGFA/7758R). Confirmation of Purity and Integrity of Antibody.



Formalin-fixed, paraffin-embedded human placenta stained with VEGF Recombinant Rabbit Monoclonal Antibody (VEGFA/7758R). Inset: PBS instead of primary antibody; secondary only negative control.

Specificity & Comments

This MAbs recognizes proteins of 19-22kDa (reducing) and 38kDa-44kDa (non-reducing), identified as various isoforms of Vascular Endothelial Growth Factor or Vascular Permeability Factor (VEGF/VPF). It is highly specific to VEGF, which is a homodimeric, disulfide-linked glycoprotein with a close homology to platelet derived growth factor (PDGF). There are multiple isoforms of VEGF containing 206-, 189-, 165-, and 121-amino acid residues. The smaller two isoforms, VEGF165 and VEGF121, are secreted proteins and act as diffusible agents, whereas the larger two remain cell associated. VEGF/VPF plays an important role in angiogenesis, which promotes tumor progression and metastasis.

Supplied As

200ug/ml of Ab purified from Bioreactor Concentrate by Protein A/G. Prepared in 10mM PBS with 0.05% BSA & 0.05% azide. Also available WITHOUT BSA & azide at 1.0mg/ml.

Storage and Stability

Antibody with azide - store at 2 to 8°C. Antibody without azide - store at -20 to -80°C. Antibody is stable for 24 months. Non-hazardous. No MSDS required.

Research Areas

Cardiovascular, Immunology, BBB VCAM-1 Signaling, Bladder Cancer, Colon Cancer, Cytokine Signaling, Infectious Disease, Neural Stem Cells, Signal Transduction, Stem Cell Differentiation, Transcription Factors

Limitations and Warranty

This antibody is available for research use only and is not approved for diagnosis. There are no warranties, expressed or implied, which extend beyond this description. Company is not liable for any personal injury or economic loss resulting from this product.