

BOB.1 (B-Cell Marker) Antibody

Mouse Monoclonal Antibody [Clone BOB1/7468]

| Catalog No | Format | Size |
|-----------------|---|--------|
| 5450-MSM9-P0 | Purified Ab with BSA and Azide at 200ug/ml | 20 ug |
| 5450-MSM9-P1 | Purified Ab with BSA and Azide at 200ug/ml | 100 ug |
| 5450-MSM9-P1ABX | Purified Ab WITHOUT BSA and Azide at 1.0mg/ml | 100 ug |

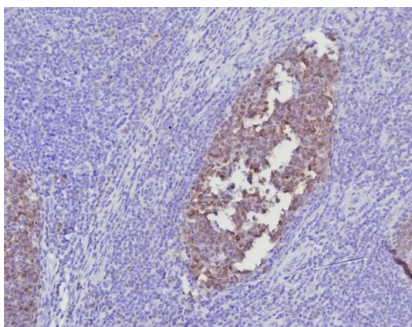
| Applications | Tested Dillution | Note |
|----------------------------|------------------|---|
| Immunohistochemistry (IHC) | 1-2ug/ml | 30 min at RT. Staining of formalin-fixed tissues requires heating tissue sections in 10mM Tris with 1mM EDTA, pH 9.0, for 45 min at 95°C followed by cooling at RT for 20 minutes |

Product Details

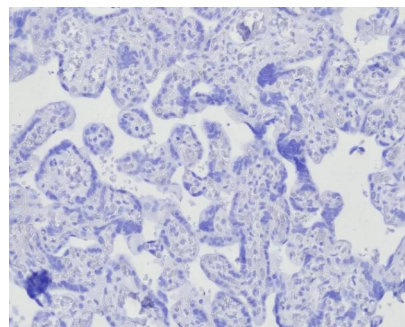
| | |
|-------------------------------|--|
| Clone | BOB1/7468 |
| Gene Name | POU2AF1 |
| Immunogen | Recombinant fragment (around aa 148-255) of human BOB1 (POU2AF1) protein (exact sequence is proprietary) |
| Host | Mouse |
| Clonality | Monoclonal |
| Isotype / Light Chain | IgG |
| Mol. Weight of Antigen | 35kDa |
| Cellular Localization | Nucleus. |
| Species Reactivity | Human |
| Positive Control | Raji or Ramos cells. Spleen or tonsil (IHC). |

*Optimal dilution for a specific application should be determined.

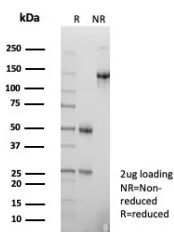
Product Images for BOB.1 (B-Cell Marker) Antibody



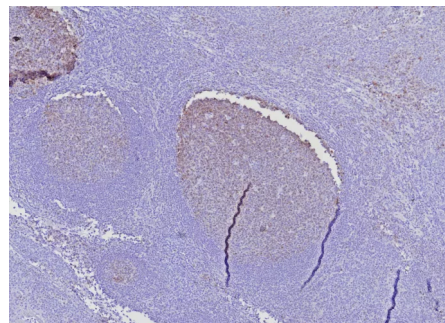
Formalin-fixed, paraffin-embedded human tonsil stained with BOB.1 Mouse Monoclonal Antibody (BOB1/7468). HIER: Tris/EDTA, pH9.0, 45min. 2°C: HRP-polymer, 30min. DAB, 5min.



IHC analysis of formalin-fixed, paraffin-embedded human placenta. Negative tissue control using BOB1/7468 at 2ug/ml in PBS for 30min RT. HIER: Tris/EDTA, pH9.0, 45min. 2°C: HRP-polymer, 30min. DAB, 5min.



SDS-PAGE Analysis of Purified BOB1 Mouse Monoclonal Antibody (BOB1/7468). Confirmation of Purity and Integrity of Antibody.



Formalin-fixed, paraffin-embedded human tonsil stained with BOB1 Mouse Monoclonal Antibody (BOB1/7468). HIER: Tris/EDTA, pH9.0, 45min. 2°C: HRP-polymer, 30min. DAB, 5min.

Specificity & Comments

BOB.1 expression in a variety of established B-cell lines, representing different stages of B-cell development, has suggested a constitutive, B-cell-specific expression pattern. LP cells in nodular lymphocyte predominant Hodgkin lymphoma, because they are germinal center-derived, are consistently immuno-positive for BOB.1. Conversely, only some cases of classical Hodgkin lymphoma show BOB.1 immuno-reactivity within the Hodgkin and Reed-Sternberg cells. Expression of BOB.1 has been reported in follicular center cell lymphoma, diffuse large B-cell lymphoma and some cases of acute myeloid leukemia. B-CLL, marginal zone lymphoma, and mantle cell lymphoma may show weak to moderate immunoreactivity.

Limitations and Warranty

This antibody is available for research use only and is not approved for use in diagnosis. There are no warranties, expressed or implied, which extend beyond this description. Company is not liable for any personal injury or economic loss resulting from this product.

Supplied As

200ug/ml of Ab purified from Bioreactor Concentrate by Protein A/G. Prepared in 10mM PBS with 0.05% BSA & 0.05% azide. Also available WITHOUT BSA & azide at 1.0mg/ml.

Storage and Stability

Antibody with azide - store at 2 to 8°C. Antibody without azide - store at -20 to -80°C. Antibody is stable for 24 months. Non-hazardous. No MSDS required.

Research Areas

B Cell Markers, Cardiovascular