

Recombinant PAX2 (Renal Cell & Ovarian Carcinoma Marker) Antibody

Rabbit Monoclonal Antibody [Clone PAX2/8671R]

| Catalog No | Format | Size |
|------------------|---|--------|
| 5076-RBM13-P0 | Purified Ab with BSA and Azide at 200ug/ml | 20 ug |
| 5076-RBM13-P1 | Purified Ab with BSA and Azide at 200ug/ml | 100 ug |
| 5076-RBM13-P1ABX | Purified Ab WITHOUT BSA and Azide at 1.0mg/ml | 100 ug |

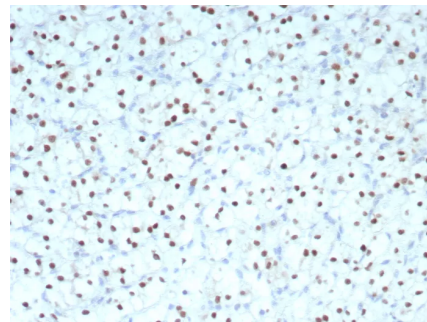
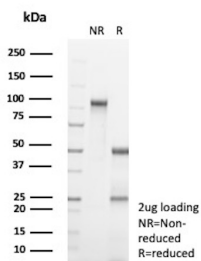
| Applications | Tested Dillution | Note |
|----------------------------|------------------|---|
| Immunohistochemistry (IHC) | 1-2ug/ml | 30 min at RT. Staining of formalin-fixed tissues requires heating tissue sections in 10mM Tris with 1mM EDTA, pH 9.0, for 45 min at 95°C followed by cooling at RT for 20 minutes |

Product Details

| | |
|-------------------------------|--|
| Clone | PAX2/8671R |
| Gene Name | PAX2 |
| Immunogen | Recombinant fragment (around aa 223-354) of human PAX2 protein (exact sequence is proprietary) |
| Host | Rabbit |
| Clonality | Monoclonal |
| Isotype / Light Chain | IgG / Kappa |
| Mol. Weight of Antigen | 42kDa |
| Cellular Localization | Nucleus. |
| Species Reactivity | Human |
| Positive Control | NAMALWA cells. Human fetal kidney renal cell carcinoma (RCC) or ovarian carcinoma. |

*Optimal dilution for a specific application should be determined.

Product Images for Recombinant PAX2 (Renal Cell & Ovarian Carcinoma Marker) Antibody



SDS-PAGE Analysis of Purified Paired box protein Pax-2 Recombinant Rabbit Monoclonal Antibody (PAX2/8671R). Confirmation of Purity and Integrity of Antibody.

Formalin-fixed, paraffin-embedded human renal cell carcinoma stained with PAX2 Recombinant Rabbit Monoclonal Antibody (PAX2/8671R) at 2ug/ml. HIER: Tris/EDTA, pH9.0, 45min. 2°C: HRP-polymer, 30min. DAB, 5min.

Specificity & Comments

Recognizes a protein of 42kDa, which is identified as PAX2. It is a member of the paired box family of transcription factors, which is required for development and proliferation of the kidney, brain, and mullerian organs. PAX2 genes contain a highly conserved DNA sequence within the paired box region, which encodes a DNA-binding domain, enabling PAX proteins to bind the promoters of specific genes to transcriptionally regulate their expression. PAX2 is specifically expressed in the developing central nervous system, eye, ear, and urogenital tract, and is essential for the development of these organs. In normal adult tissues PAX2 was mainly detected in the urogenital system, including kidney, ureteric epithelium, fallopian tube epithelium, ovary and uterus. In tumors, PAX2 has been detected in renal cell carcinomas, Wilms' tumors, nephrogenic adenomas and papillary serous carcinoma of the ovary. PAX2 has been used as a marker for the identification of renal cell carcinoma and ovarian carcinoma by immunohistochemistry.

Limitations and Warranty

This antibody is available for research use only and is not approved for use in diagnosis. There are no warranties, expressed or implied, which extend beyond this description. Company is not liable for any personal injury or economic loss resulting from this product.

Supplied As

200ug/ml of Ab purified from Bioreactor Concentrate by Protein A/G. Prepared in 10mM PBS with 0.05% BSA & 0.05% azide. Also available WITHOUT BSA & azide at 1.0mg/ml.

Storage and Stability

Antibody with azide - store at 2 to 8°C. Antibody without azide - store at -20 to -80°C. Antibody is stable for 24 months. Non-hazardous. No MSDS required.

Research Areas

Neural Stem Cells, Nuclear Marker, Stem Cell Differentiation
