

## Recombinant Smooth Muscle Myosin Heavy Chain (SM-MHC)(Leiomyosarcoma & Myoepithelial Cell Marker) Antibody

Rabbit Monoclonal Antibody [Clone MYH11/7610R]

Catalog No	Format	Size
4629-RBM10-P0	Purified Ab with BSA and Azide at 200ug/ml	20 ug
4629-RBM10-P1	Purified Ab with BSA and Azide at 200ug/ml	100 ug
4629-RBM10-P1ABX	Purified Ab WITHOUT BSA and Azide at 1.0mg/ml	100 ug

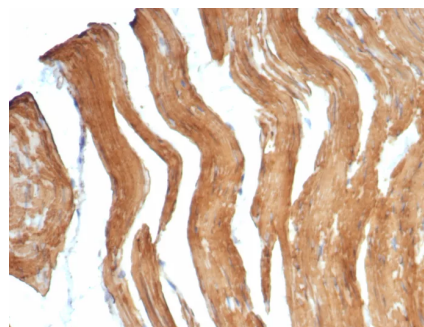
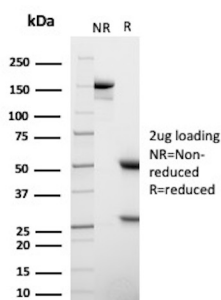
Applications	Tested Dillution	Note
Immunohistochemistry (IHC)	1-2ug/ml	30 min at RT. Staining of formalin-fixed tissues requires heating tissue sections in 10mM Tris with 1mM EDTA, pH 9.0, for 45 min at 95°C followed by cooling at RT for 20 minutes

### Product Details

<b>Clone</b>	MYH11/7610R
<b>Gene Name</b>	MYH11
<b>Immunogen</b>	Recombinant fragment (around aa1-200) of human MYH11 protein (exact sequence is proprietary)
<b>Host</b>	Rabbit
<b>Clonality</b>	Monoclonal
<b>Isotype / Light Chain</b>	IgG / Kappa
<b>Mol. Weight of Antigen</b>	227kDa
<b>Cellular Localization</b>	Cytoplasm.
<b>Species Reactivity</b>	Human
<b>Positive Control</b>	Human smooth muscle uterus or breast.

\*Optimal dilution for a specific application should be determined.

### Product Images for Recombinant Smooth Muscle Myosin Heavy Chain (SM-MHC)(Leiomyosarcoma & Myoepithelial Cell Marker) Antibody



SDS-PAGE Analysis of Purified MYH11 Recombinant Rabbit Monoclonal Antibody (MYH11/7610R). Confirmation of Purity and Integrity of Antibody.

Formalin-fixed, paraffin-embedded human smooth muscle stained with SM-MHC Recombinant Rabbit Monoclonal Antibody (MYH11/7610R). HIER: Tris/EDTA, pH9.0, 45min. 2°C: HRP-polymer, 30min. DAB, 5min.

### **Specificity & Comments**

Smooth Muscle Myosin, heavy chain (SMM-HC) is a cytoplasmic structural protein that is a major component of the contractile apparatus of the smooth muscle cells. Expression of smooth muscle myosin is developmentally regulated, appearing early and is specific for smooth muscle development. SM-MHC stains the intact myoepithelial cell (MEC) layers present in benign and in situ malignant breast and bronchioloalveolar lesions and is therefore very helpful in distinguishing between benign and malignant tumors. The antibody reacts with smooth muscle cells and myoepithelial cells, but not with myofibroblasts. It is very helpful in distinguishing between benign sclerosing breast lesions and infiltrating carcinomas in difficult cases since it strongly stains the myoepithelial layer in the benign lesions while it is negative in the infiltrating carcinomas.

---

### **Limitations and Warranty**

This antibody is available for research use only and is not approved for use in diagnosis. There are no warranties, expressed or implied, which extend beyond this description. Company is not liable for any personal injury or economic loss resulting from this product.

---

### **Supplied As**

200ug/ml of Ab purified from Bioreactor Concentrate by Protein A/G. Prepared in 10mM PBS with 0.05% BSA & 0.05% azide. Also available WITHOUT BSA & azide at 1.0mg/ml.

---

### **Storage and Stability**

Antibody with azide - store at 2 to 8°C. Antibody without azide - store at -20 to -80°C. Antibody is stable for 24 months. Non-hazardous. No MSDS required.

---

### **Research Areas**

Cardiovascular, Developmental Biology, Signal Transduction

---