

Recombinant Calretinin / Calbindin 2 (Mesothelioma Marker) Antibody

Mouse Monoclonal Antibody [Clone rCALB2/7123]

Catalog No	Format	Size
794-MSM13-P0	Purified Ab with BSA and Azide at 200ug/ml	20 ug
794-MSM13-P1	Purified Ab with BSA and Azide at 200ug/ml	100 ug
794-MSM13-P1ABX	Purified Ab WITHOUT BSA at 1.0mg/ml	100 ug

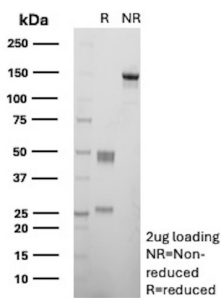
Applications	Tested Dillution	Note
Immunohistochemistry (IHC)	1-2ug/ml	30 min at RT. Staining of formalin-fixed tissues requires heating tissue sections in 10mM Tris with 1mM EDTA, pH 9.0, for 45 min at 95°C followed by cooling at RT for 20 minutes
Western Blot (WB)	2-4ug/ml	

Product Details

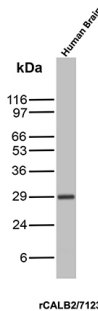
Clone	rCALB2/7123
Gene Name	CALB2
Immunogen	Recombinant human Calretinin (Calbindin 2) protein fragment (around aa23-242) (exact sequence is proprietary)
Host	Mouse
Clonality	Monoclonal
Isotype / Light Chain	IgG1 / Kappa
Mol. Weight of Antigen	29kDa
Cellular Localization	Cytoplasm. Nucleus.
Species Reactivity	Human
Positive Control	Human brain testis or mesothelioma tissue.

*Optimal dilution for a specific application should be determined.

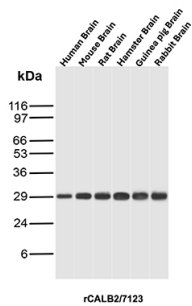
Product Images for Recombinant Calretinin / Calbindin 2 (Mesothelioma Marker) Antibody



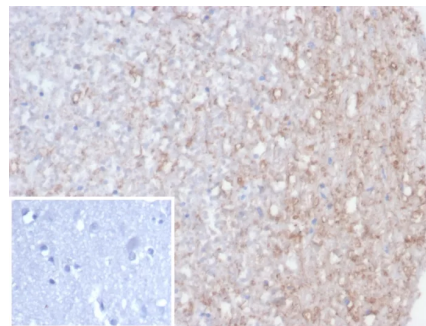
SDS-PAGE Analysis of Purified Calretinin Recombinant Mouse Monoclonal Antibody (rCALB2/7123). Confirmation of Purity and Integrity of Antibody.



Western Blot Analysis of Human Brain tissue lysate using Calretinin Recombinant Mouse Monoclonal Antibody (rCALB2/7123).



Western Blot Analysis of Brain tissue lysates of different species using Calretinin Recombinant Mouse Monoclonal Antibody (rCALB2/7123).



Formalin-fixed, paraffin-embedded human brain stained with Calretinin Recombinant Mouse Monoclonal Antibody (rCALB2/7123). Inset: PBS instead of primary, secondary negative control.

Specificity & Comments

It recognizes a protein of about 29kDa, which is identified as Calretinin (also known as Calbindin 2). Calretinin is a vitamin D-dependent calcium-binding protein involved in calcium signaling. It is present in subsets of neurons throughout the brain and spinal chord, including sensory ganglia. Antibody to calretinin is useful in differentiating mesothelioma from adenocarcinomas of the lung. It also aids in differentiating adrenal cortical neoplasms from pheochromocytomas.

Limitations and Warranty

This antibody is available for research use only and is not approved for use in diagnosis. There are no warranties, expressed or implied, which extend beyond this description. Company is not liable for any personal injury or economic loss resulting from this product.

Supplied As

200ug/ml of Ab produced in HEK293 cell mammalian-based expression system. Prepared in 10mM PBS with 0.05% BSA & 0.05% azide. Also available WITHOUT BSA & azide at 1.0mg/ml.

Storage and Stability

Antibody with azide - store at 2 to 8°C. Antibody without azide - store at -20 to -80°C. Antibody is stable for 24 months. Non-hazardous. No MSDS required.