

## CD147 / BSG / EMMPRIN / Neurothelin Antibody

Mouse Monoclonal Antibody [Clone BSG/7955]

| Catalog No      | Format  | Size   |
|-----------------|---|--------|
| 682-MSM15-P0    | Purified Ab with BSA and Azide at 200ug/ml    | 20 ug  |
| 682-MSM15-P1    | Purified Ab with BSA and Azide at 200ug/ml    | 100 ug |
| 682-MSM15-P1ABX | Purified Ab WITHOUT BSA and Azide at 1.0mg/ml | 100 ug |

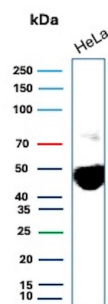
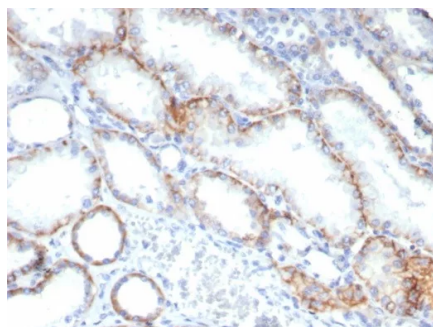
| Applications               | Tested Dillution | Note  |
|----------------------------|------------------|---|
| Immunohistochemistry (IHC) | 1-2ug/ml         | 30 min at RT. Staining of formalin-fixed tissues requires heating tissue sections in 10mM Tris with 1mM EDTA, pH 9.0, for 45 min at 95°C followed by cooling at RT for 20 minutes |
| Western Blot (WB)          | 2-4ug/ml         |   |

### Product Details

|                               |   |
|-------------------------------|---|
| <b>Clone</b>                  | BSG/7955  |
| <b>Gene Name</b>              | BSG   |
| <b>Immunogen</b>              | Recombinant full-length human BSG protein   |
| <b>Host</b>                   | Mouse   |
| <b>Clonality</b>              | Monoclonal  |
| <b>Isotype / Light Chain</b>  | IgG1 / Kappa  |
| <b>Mol. Weight of Antigen</b> | 35kDa (non-reduced); 40kDa (reduced)  |
| <b>Cellular Localization</b>  | Cell surface  |
| <b>Species Reactivity</b>     | Human   |
| <b>Positive Control</b>       | HeLa cells. Human renal cell carcinoma, ovarian carcinoma or melanoma. HepG2, MCF7, Human Brain, Human Heart, Human Intestine, Human Kidney |

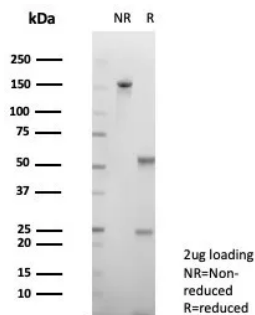
\*Optimal dilution for a specific application should be determined.

### Product Images for CD147 / BSG / EMMPRIN / Neurothelin Antibody

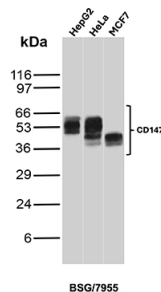


Formalin-fixed, paraffin-embedded human renal cell carcinoma stained with CD147 Mouse Monoclonal Antibody (BSG/7955) at 2ug/ml. HIER: Tris/EDTA, pH9.0, 45min. 2°C: HRP-polymer, 30min. DAB, 5min.

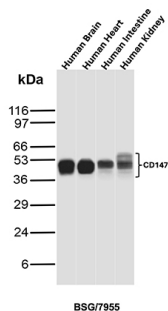
Western Blot Analysis of HeLa cell lysate using CD147 Mouse Monoclonal Antibody (BSG/7955).



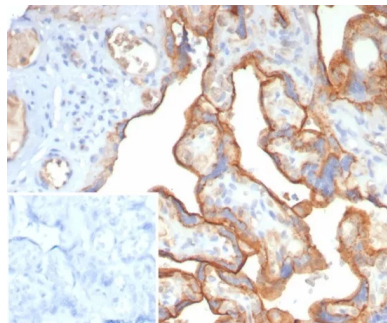
SDS-PAGE Analysis of Purified CD147 Mouse Monoclonal Antibody (BSG/7955). Confirmation of Integrity and Purity of Antibody.



Western Blot Analysis of HepG2, HeLa and MCF7 cell lysates using CD147 Mouse Monoclonal Antibody (BSG/7955).



Western Blot Analysis of Human Brain, Human Heart, Human Intestine, and Human Kidney tissue lysates using CD147 Mouse Monoclonal Antibody (BSG/7955).



Formalin-fixed, paraffin-embedded human placenta stained with CD147 Mouse Monoclonal Antibody (BSG/7955) at 2ug/ml. Inset: PBS instead of primary antibody; secondary only negative control.

### Specificity & Comments

This MAb recognizes extracellular epitope 2 within the N-terminal Ig domain of human CD147. It is expressed more intensely on thymocytes than on mature peripheral blood T cells. CD147 is important in spermatogenesis, embryo implantation, neural network formation, and tumor progression. It stimulates the production of interstitial collagenase, gelatinase A, stromelysin-1 and various metalloproteinases (MMPs) by fibroblasts. These enzymes are important factors in cancer invasion and metastasis.

### Supplied As

200ug/ml of Ab purified from Bioreactor Concentrate by Protein A/G. Prepared in 10mM PBS with 0.05% BSA & 0.05% azide. Also available WITHOUT BSA & azide at 1.0mg/ml.

### Storage and Stability

Antibody with azide - store at 2 to 8°C. Antibody without azide - store at -20 to -80°C. Antibody is stable for 24 months. Non-hazardous. No MSDS required.

### Research Areas

Cardiovascular, Infectious Disease

### Limitations and Warranty

This antibody is available for research use only and is not approved for use in diagnosis. There are no warranties, expressed or implied, which extend beyond this description. Company is not liable for any personal injury or economic loss resulting from this product.