

Recombinant FOXL2 Antibody

Rabbit Monoclonal Antibody [Clone FOXL2/8362R]

Catalog No	Format	Size
668-RBM3-P0	Purified Ab with BSA and Azide at 200ug/ml	20 ug
668-RBM3-P1	Purified Ab with BSA and Azide at 200ug/ml	100 ug
668-RBM3-P1ABX	Purified Ab WITHOUT BSA and Azide at 1.0mg/ml	100 ug

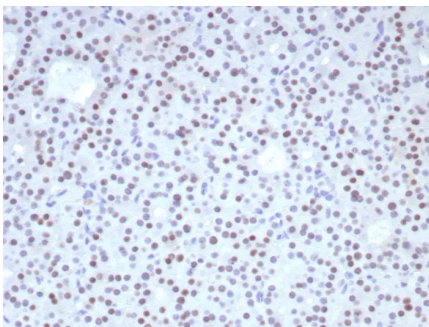
Applications	Tested Dillution	Note
Immunohistochemistry (IHC)	1-2ug/ml	30 min at RT. Staining of formalin-fixed tissues requires heating tissue sections in 10mM Tris with 1mM EDTA, pH 9.0, for 45 min at 95°C followed by cooling at RT for 20 minutes
Western Blot (WB)	2-4ug/ml	

Product Details

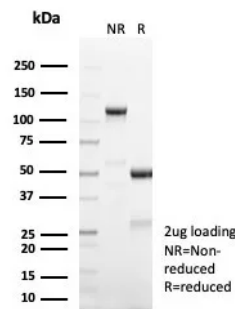
Clone	FOXL2/8362R
Gene Name	FOXL2
Immunogen	Recombinant full-length human FOXL2 protein
Host	Rabbit
Clonality	Monoclonal
Isotype / Light Chain	IgG / Kappa
Mol. Weight of Antigen	38kDa
Cellular Localization	Nucleus.
Species Reactivity	Human
Positive Control	Nuclear expression in ovarian follicular and stromal cells. Granulosa cell tumor. K-562.

*Optimal dilution for a specific application should be determined.

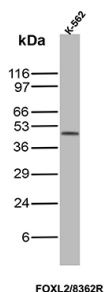
Product Images for Recombinant FOXL2 Antibody



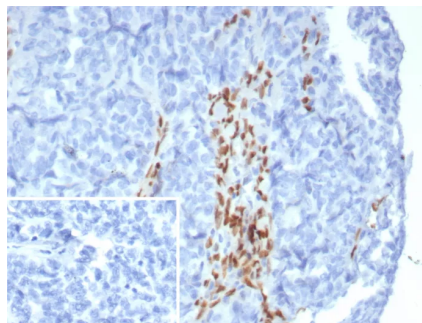
Formalin-fixed, paraffin-embedded human parathyroid stained with FOXL2 Recombinant Rabbit Monoclonal Antibody (FOXL2/8362R). HIER: Tris/EDTA, pH9.0, 45min. 2: HRP-polymer, 30min. DAB, 5min.



SDS-PAGE Analysis of Purified FOXL2 Recombinant Rabbit Monoclonal Antibody (FOXL2/8362R). Confirmation of Purity and Integrity of Antibody.



Western Blot Analysis of K-562 cell lysate using FOXL2 Rabbit Recombinant Monoclonal Antibody (FOXL2/8362R).



Formalin-fixed, paraffin-embedded human ovarian carcinoma stained with FOXL2 Recombinant Rabbit Monoclonal Antibody (FOXL2/8362R). Inset: PBS instead of primary antibody; secondary only negative control.

Specificity & Comments

FOXL2 is a critical factor essential for ovary differentiation and maintenance, and repression of the genetic program for somatic testis determination. It prevents trans-differentiation of ovary to testis through transcriptional repression of the sertoli cell-promoting gene SOX9. FOXL2 is mainly expressed in ovary, parathyroid gland and sex cord-stromal tumors. FOXL2 is generally used for diagnosis of sex cord-stromal tumors with Inhibin, Calretinin and SF-1.

Supplied As

200ug/ml of Ab purified from Bioreactor Concentrate by Protein A/G. Prepared in 10mM PBS with 0.05% BSA & 0.05% azide. Also available WITHOUT BSA & azide at 1.0mg/ml.

Storage and Stability

Antibody with azide - store at 2 to 8°C. Antibody without azide - store at -20 to -80°C. Antibody is stable for 24 months. Non-hazardous. No MSDS required.

Research Areas

Endothelial Cell Marker

Limitations and Warranty

This antibody is available for research use only and is not approved for use in diagnosis. There are no warranties, expressed or implied, which extend beyond this description. Company is not liable for any personal injury or economic loss resulting from this product.