

Recombinant CD269 / TNFRSF17 / BCMA (B-Cell Maturation Protein) Antibody

Mouse Monoclonal Antibody [Clone rCD269/8507]

Catalog No	Format	Size
608-MSM11-P0	Purified Ab with BSA and Azide at 200ug/ml	20 ug
608-MSM11-P1	Purified Ab with BSA and Azide at 200ug/ml	100 ug
608-MSM11-P1ABX	Purified Ab WITHOUT BSA or Azide at 1.0mg/ml	100 ug

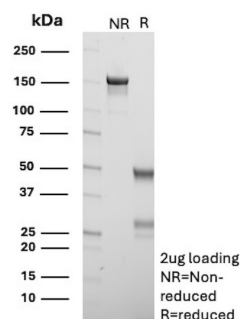
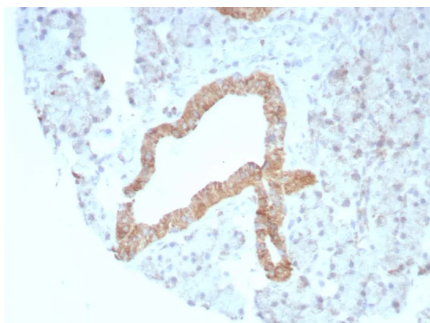
Applications	Tested Dillution	Note
Immunohistochemistry (IHC)	1-2ug/ml	30 min at RT. Staining of formalin-fixed tissues requires heating tissue sections in 10mM Tris with 1mM EDTA, pH 9.0, for 45 min at 95°C followed by cooling at RT for 20 minutes
Western Blot (WB)	2-4ug/ml	

Product Details

Clone	rCD269/8507
Immunogen	Recombinant fragment (around aa78-184) of the human CD269 protein (exact sequence is proprietary)
Host	Mouse
Clonality	Monoclonal
Isotype / Light Chain	IgG1 / Kappa
Mol. Weight of Antigen	20.17kDa
Cellular Localization	Cell membrane, Endomembrane system
Species Reactivity	Human
Positive Control	NAMALWA cells. Tonsil or gastric carcinoma (IHC).

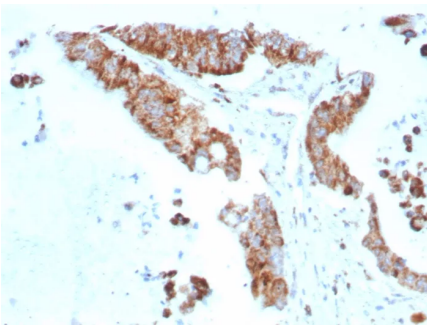
*Optimal dilution for a specific application should be determined.

Product Images for Recombinant CD269 / TNFRSF17 / BCMA (B-Cell Maturation Protein) Antibody



Formalin-fixed, paraffin-embedded human prostate stained with CD269 Recombinant Mouse Monoclonal Antibody (rCD269/8507). HIER: Tris/EDTA, pH9.0, 45min. 2°C: HRP-polymer, 30min. DAB, 5min.

SDS-PAGE Analysis of Purified CD269 Recombinant Mouse Monoclonal Antibody(rCD269/8507). Confirmation of Purity and Integrity of Antibody



Formalin-fixed, paraffin-embedded human colon carcinoma stained with CD269 Recombinant Mouse Monoclonal Antibody (rCD269/8507). HIER: Tris/EDTA, pH9.0, 45min. 2°C; HRP-polymer, 30min. DAB, 5min.

Specificity & Comments

The B cell maturation protein (BCMA) is a type I integral membrane protein that belongs to the tumor necrosis factor receptor (TNF-R) superfamily. It is expressed as a 184 amino acid peptide that is expressed only in mature B-lymphocytes and is located on the cis part of the Golgi apparatus. BCMA shares significant homology with TACI (transmembrane activator) within the cysteine-rich domain. TACI has been shown to bind CAML, which induces activation of NFAT (nuclear factor of activated T cells). Both BCMA and TACI have been shown to bind APRIL and TALL-1, which stimulate B cell proliferation in conjunction with other B-cell activators. When overexpressed, TALL-1 stimulates the development of systemic lupus erythaematosus (SLE).

Limitations and Warranty

This antibody is available for research use only and is not approved for use in diagnosis. There are no warranties, expressed or implied, which extend beyond this description. Company is not liable for any personal injury or economic loss resulting from this product.

Supplied As

200ug/ml of Ab produced in a mammalian-based expression system. Prepared in 10mM PBS with 0.05% BSA & 0.05% azide. Also available WITHOUT BSA & azide at 1.0mg/ml.

Storage and Stability

Antibody with azide - store at 2 to 8 °C. Antibody without azide - store at -20 to -80 °C. Antibody is stable for 24 months. Non-hazardous. No MSDS required.