

CD21 (Mature B-Cell & Follicular Dendritic Cell Marker) Antibody

Mouse Monoclonal Antibody [Clone rCR2/6964]

Catalog No	Format	Size
1380-MSM14-P0	Purified Ab with BSA and Azide at 200ug/ml	20 ug
1380-MSM14-P1	Purified Ab with BSA and Azide at 200ug/ml	100 ug
1380-MSM14-P1ABX	Purified Ab WITHOUT BSA and Azide at 1.0mg/ml	100 ug

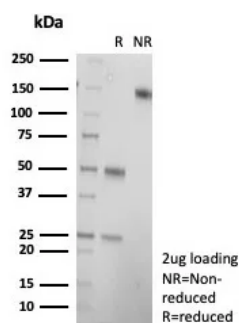
Applications	Tested Dillution	Note
Immunohistochemistry (IHC)	1-2ug/ml	30 min at RT. Staining of formalin-fixed tissues requires heating tissue sections in 10mM Tris with 1mM EDTA, pH 9.0, for 45 min at 95°C followed by cooling at RT for 20 minutes
Western Blot (WB)	2-4ug/ml	

Product Details

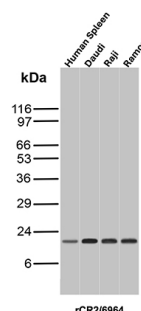
Clone	rCR2/6964
Gene Name	CR2
Immunogen	Recombinant fragment (around aa 900-1033) of human CR2 (CD21) protein (exact sequence is proprietary)
Host	Mouse
Clonality	Monoclonal
Isotype / Light Chain	IgG1 / Kappa
Mol. Weight of Antigen	140kDa
Cellular Localization	Cell surface.
Species Reactivity	Human
Positive Control	MOLT4 Raji or WEHI-231 cells. Human tonsil.Spleen, Daudi, Ramos.

**Optimal dilution for a specific application should be determined.*

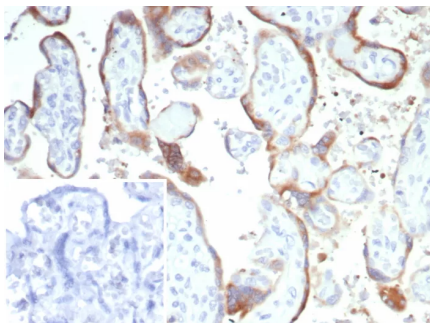
Product Images for CD21 (Mature B-Cell & Follicular Dendritic Cell Marker) Antibody



Formalin-fixed, paraffin-embedded human tonsil stained with CD21 Mouse Monoclonal Antibody (rCR2/6964). Inset: PBS instead of primary antibody; secondary only negative control.



Western Blot Analysis of Human Spleen, Daudi, Raji and Ramos lysates using CD21 Recombinant Mouse Monoclonal Antibody (rCR2/6964).



SDS-PAGE Analysis of Purified CD21 Mouse Monoclonal Antibody (rCR2/6964).
Confirmation of Purity and Integrity of Antibody.

Specificity & Comments

Recognizes a protein of 140kDa, which is identified as the complement receptor 2 (CR2) or CD21. This protein is expressed strongly on mature B cells, follicular dendritic cells and weakly on immature thymocytes and T lymphocytes. In B-cell ontogeny, CD21 appears after the pre-B-stage, is maintained during peripheral B-cell development and is lost upon terminal differentiation into plasma cells. CD21 expression is also gradually lost after stimulation of B cells in vitro. CD21 functions as receptor for C3d, C3dg and iC3b Complement components, for EBV and for IFN α . CD21 binds to CD23 and associates with CD19, CD81 and Leu13 to form a large signal-transduction complex involved in B cell activation.

Supplied As

200ug/ml of Ab purified from Bioreactor Concentrate by Protein A/G. Prepared in 10mM PBS with 0.05% BSA & 0.05% azide. Also available WITHOUT BSA & azide at 1.0mg/ml.

Storage and Stability

Antibody with azide - store at 2 to 8°C. Antibody without azide - store at -20 to -80°C. Antibody is stable for 24 months. Non-hazardous. No MSDS required.

Research Areas

B Cell Markers, Complement System, Dendritic Cell Marker, Immunology

Limitations and Warranty

This antibody is available for research use only and is not approved for use in diagnosis. There are no warranties, expressed or implied, which extend beyond this description. Company is not liable for any personal injury or economic loss resulting from this product.