

Recombinant Cadherin 17 / LI Cadherin (Gastric Adenocarcinoma Marker) Antibody

Rabbit Monoclonal Antibody [Clone CDH17/8515R]

Catalog No	Format	Size
1015-RBM15-P0	Purified Ab with BSA and Azide at 200ug/ml	20 ug
1015-RBM15-P1	Purified Ab with BSA and Azide at 200ug/ml	100 ug
1015-RBM15-P1ABX	Purified Ab WITHOUT BSA at 1.0mg/ml	100 ug

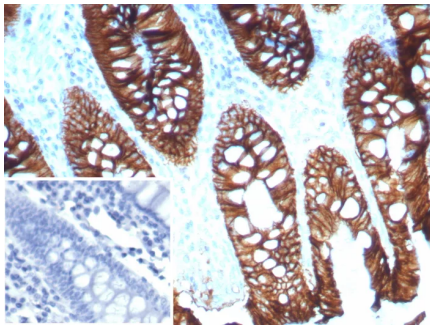
Applications	Tested Dillution	Note
Immunohistochemistry (IHC)	1-2ug/ml	30 min at RT. Staining of formalin-fixed tissues requires heating tissue sections in 10mM Tris with 1mM EDTA, pH 9.0, for 45 min at 95°C followed by cooling at RT for 20 minutes
Western Blot (WB)	2-4ug/ml	

Product Details

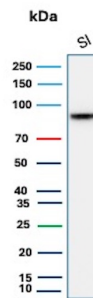
Clone	CDH17/8515R
Gene Name	CDH17
Immunogen	Recombinant fragment (around aa 242-418) of human Cadherin 17 protein (CDH17) (exact sequence is proprietary)
Host	Rabbit
Clonality	Monoclonal
Isotype / Light Chain	IgG / Kappa
Mol. Weight of Antigen	120kDa
Cellular Localization	Cell Surface. Cytoplasm.
Species Reactivity	Human
Positive Control	Human stomach, colon, liver or intestine.

*Optimal dilution for a specific application should be determined.

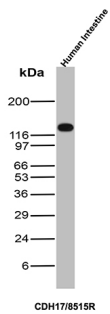
Product Images for Recombinant Cadherin 17 / LI Cadherin (Gastric Adenocarcinoma Marker) Antibody



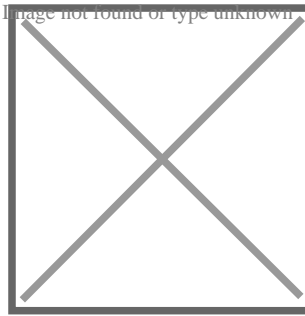
Formalin-fixed, paraffin-embedded human colon stained with CDH17 Recombinant Rabbit Monoclonal Antibody (CDH17/8515R). Inset: PBS instead of primary antibody; secondary only negative control.



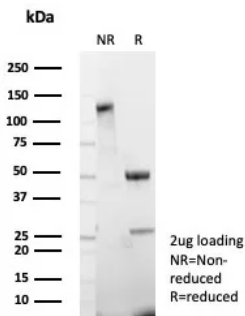
Western Blot Analysis of human Small Intestine tissue lysate using CDH17 Recombinant Rabbit Monoclonal Antibody (CDH17/8515R).



Western Blot Analysis of human Intestine tissue lysate using CDH17 Recombinant Rabbit Monoclonal Antibody (CDH17/8515R).



Western Blot Analysis of Intestine tissue lysates of different species using CDH17 Recombinant Rabbit Monoclonal Antibody (CDH17/8515R).



SDS-PAGE Analysis of Purified CDH17 Recombinant Rabbit Monoclonal Antibody (CDH17/8515R). Confirmation of Purity and Integrity of Antibody.

Specificity & Comments

It recognizes a protein of 120kDa, which is identified as Cadherin 17 (also known as LI Cadherin). The cadherins are a family of Calcium-dependent adhesion molecules that function to mediate cell-cell binding critical to the maintenance of tissue structure and morphogenesis. Cadherins each contain a large extracellular domain at the amino terminus, which is characterized by a series of five homologous repeats, the most distal of which is thought to be responsible for binding specificity. The relatively short carboxy terminal, intracellular domain interacts with a variety of cytoplasmic proteins, including beta-catenin, to regulate cadherin function. LI-cadherin (for liver-intestine-cadherin) expression is restricted to liver and intestine tissues and is specifically localized to the basolateral domain of hepatocytes and enterocytes.

Limitations and Warranty

This antibody is available for research use only and is not approved for use in diagnosis. There are no warranties, expressed or implied, which extend beyond this description. Company is not liable for any personal injury or economic loss resulting from this product.

Supplied As

200ug/ml of Ab purified from rabbit anti-serum by Protein A. Prepared in 10mM PBS with 0.05% BSA & 0.05% azide. Also available WITHOUT BSA at 1.0mg/ml.

Storage and Stability

Antibody with azide - store at 2 to 8°C. Antibody without azide - store at -20 to -80°C. Antibody is stable for 24 months. Non-hazardous. No MSDS required.