

Recombinant Transcription factor E3 / TFE3 (Transcription Factor) Antibody

Rabbit Monoclonal Antibody [Clone TFE3/6849R]

Catalog No	Format	Size
7030-RBM1-P0	Purified Ab with BSA and Azide at 200ug/ml	20 ug
7030-RBM1-P1	Purified Ab with BSA and Azide at 200ug/ml	100 ug
7030-RBM1-P1ABX	Purified Ab WITHOUT BSA and Azide at 1.0mg/ml	100 ug

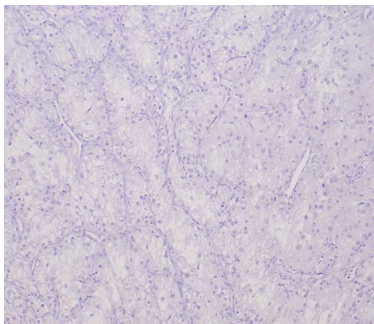
Applications	Tested Dillution	Note
Immunohistochemistry (IHC)	1-2ug/ml	30 min at RT. Staining of formalin-fixed tissues requires heating tissue sections in 10mM Tris with 1mM EDTA, pH 9.0, for 45 min at 95°C followed by cooling at RT for 20 minutes

Product Details

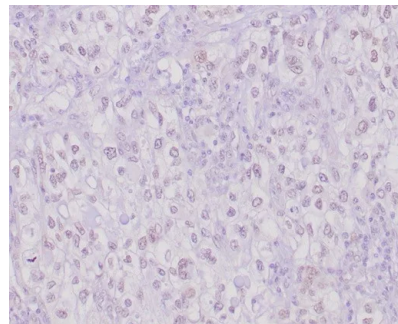
Clone	TFE3/6849R
Gene Name	TFE3
Immunogen	Recombinant full-length human TFE3 protein
Host	Rabbit
Clonality	Monoclonal
Isotype / Light Chain	IgG / Kappa
Mol. Weight of Antigen	62kDa
Cellular Localization	Nucleus.
Species Reactivity	Human
Positive Control	MiT family translocated renal cell carcinoma. Ubiquitous mainly nuclear expression.

*Optimal dilution for a specific application should be determined.

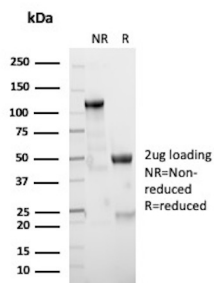
Product Images for Recombinant Transcription factor E3 / TFE3 (Transcription Factor) Antibody



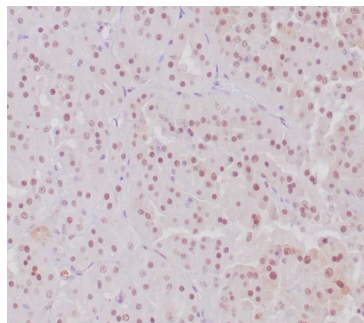
IHC analysis of formalin-fixed, paraffin-embedded human clear cell RCC. Negative tissue control using TFE3/6849R at 2ug/ml in PBS for 30min RT. HIER: Tris/EDTA, pH9.0, 45min. 2°: HRP-polymer, 30min. DAB, 5min.



IHC analysis of formalin-fixed, paraffin-embedded human MIT translocation RCC. Nuclear staining using TFE3/6849R at 2ug/ml. HIER: Tris/EDTA, pH9.0, 45min. 2°: HRP-polymer, 30min. DAB, 5min.



SDS-PAGE Analysis of Purified TFE3 Recombinant Rabbit Monoclonal Antibody (TFE3/6849R). Confirmation of Purity and Integrity of Antibody.



IHC analysis of formalin-fixed, paraffin-embedded human MIT translocation RCC. Nuclear staining using TFE3/6849R at 2ug/ml. HIER: Tris/EDTA, pH9.0, 45min. 2°: HRP-polymer, 30min. DAB, 5min.

Specificity & Comments

Transcription factor E3 (TFE3) belongs to the basic helix-loop-helix zipper transcription factor family. The TFE3 gene is located on the short arm of the X chromosome, is expressed in various cells of the human body, and participates in the regulation of various genes. The rearrangement of this gene is associated with a variety of tumors, and it is highly expressed in acinar soft tissue sarcoma with TFE3 fusion gene, Xp11.2 translocation/TFE3 gene fusion-related renal cell carcinoma, and in perivascular epithelioid cell tumors. positive expression.

Supplied As

200ug/ml of Ab purified from Bioreactor Concentrate by Protein A/G. Prepared in 10mM PBS with 0.05% BSA & 0.05% azide. Also available WITHOUT BSA & azide at 1.0mg/ml.

Storage and Stability

Antibody with azide - store at 2 to 8°C. Antibody without azide - store at -20 to -80°C. Antibody is stable for 24 months. Non-hazardous. No MSDS required.

Research Areas

Nuclear Marker

Limitations and Warranty

This antibody is available for research use only and is not approved for use in diagnosis. There are no warranties, expressed or implied, which extend beyond this description. Company is not liable for any personal injury or economic loss resulting from this product.