

## Recombinant Transcription factor E3 ?/ TFE3 (Transcription Factor) Antibody

Rabbit Monoclonal Antibody [Clone TFE3/8663R]

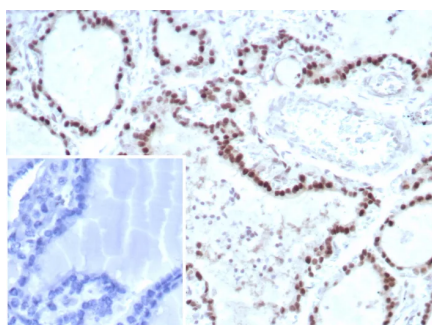
Catalog No	Format	Size
7030-RBM3-P0	Purified Ab with BSA and Azide	200ug/ml
7030-RBM3-P1	Purified Ab with BSA and Azide	200ug/ml
7030-RBM3-P1ABX	Purified Ab WITHOUT BSA and Azide	1.0mg/ml

Applications	Tested Dillution
Immunohistochemistry (IHC)	1-2ug/ml

Product Details	
Clone	TFE3/8663R
Gene Name	TFE3
Immunogen	Recombinant full-length human TFE3 protein
Host	Rabbit
Clonality	Monoclonal
Isotype / Light Chain	IgG / Kappa
Mol. Weight of Antigen	62kDa
Cellular Localization	Nucleus.
Species Reactivity	Human
Positive Control	MiT family translocated renal cell carcinoma. Ubiquitous mainly nuclear expression.

*\*Optimal dilution for a specific application should be determined.*

### Product Images for Recombinant Transcription factor E3 ?/ TFE3 (Transcription Factor) Antibody



IHC analysis of formalin-fixed, paraffin-embedded human thyroid. Nuclear staining using TFE3/8663R at 2ug/ml. Inset: PBS instead of primary antibody; secondary only negative control.

### Specificity & Comments

Transcription factor E3 (TFE3) belongs to the basic helix-loop-helix zipper transcription factor family. The TFE3 gene is located on the short arm of the X chromosome, is expressed in various cells of the human body, and participates in the regulation of various genes. The rearrangement of this gene is associated with a variety of tumors, and it is highly expressed in acinar soft tissue sarcoma with TFE3 fusion gene, Xp11.2 translocation/TFE3 gene fusion-related renal cell carcinoma, and in perivascular epithelioid cell tumors. positive expression.

### Research Areas

Nuclear Marker

### Known Applications & Suggested Dilutions

Immunohistochemistry (Formalin-fixed) (1-2ug/ml for 30 minutes at RT),(Staining of formalin-fixed tissues requires heating tissue sections in 10mM Tris with 1mM EDTA, pH 9.0, for 45 min at 95&degC followed by cooling at RT for 20 minutes),Optimal dilution for a specific application should be determined.

### Limitations and Warranty

This antibody is available for research use only and is not approved for use in diagnosis.

There are no warranties, expressed or implied, which extend beyond this description. Company is not liable for any personal injury or economic loss resulting from this product.

### Supplied As

200ug/ml of Ab purified from Bioreactor Concentrate by Protein A/G. Prepared in 10mM PBS with 0.05% BSA & 0.05% azide. Also available WITHOUT BSA & azide at 1.0mg/ml.

### Storage and Stability

Antibody with azide - store at 2 to 8°C. Antibody without azide - store at -20 to -80°C. Antibody is stable for 24 months. Non-hazardous. No MSDS required.