

CD21 (Mature B-Cell & Follicular Dendritic Cell Marker) Antibody

Mouse Monoclonal Antibody [Clone CR2/6683]

| Catalog No | Format | Size |
|------------------|-----------------------------------------------|--------|
| 1380-MSM13-P0 | Purified Ab with BSA and Azide at 200ug/ml | 20 ug |
| 1380-MSM13-P1 | Purified Ab with BSA and Azide at 200ug/ml | 100 ug |
| 1380-MSM13-P1ABX | Purified Ab WITHOUT BSA and Azide at 1.0mg/ml | 100 ug |

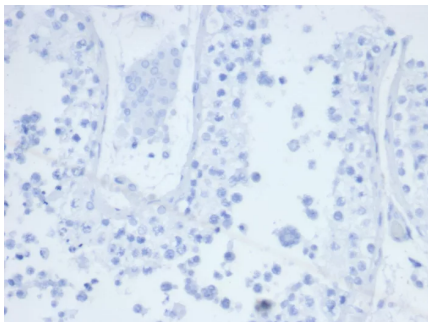
| Applications | Tested Dillution | Note |
|----------------------------|------------------|-----------------------------------------------------------------------------------------------------------------------------------------------------------------------------------|
| Immunohistochemistry (IHC) | 1-2ug/ml | 30 min at RT. Staining of formalin-fixed tissues requires heating tissue sections in 10mM Tris with 1mM EDTA, pH 9.0, for 45 min at 95°C followed by cooling at RT for 20 minutes |

Product Details

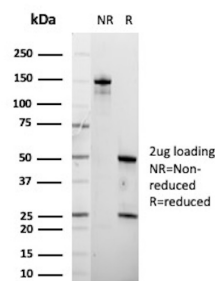
| | |
|------------------------|--------------------------------|
| Clone | CR2/6683 |
| Gene Name | CR2 |
| Immunogen | human B cell line SB |
| Host | Mouse |
| Clonality | Monoclonal |
| Isotype / Light Chain | IgG2a / Kappa |
| Mol. Weight of Antigen | 140kDa |
| Cellular Localization | Cell surface |
| Species Reactivity | Human |
| Positive Control | Raji or WEHI-231 cells. Tonsil |

*Optimal dilution for a specific application should be determined.

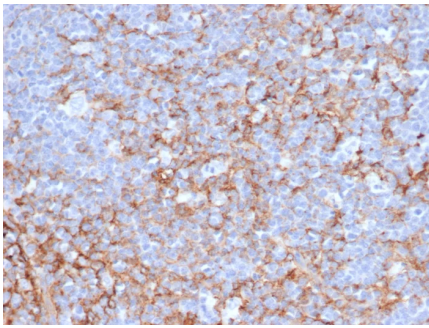
Product Images for CD21 (Mature B-Cell & Follicular Dendritic Cell Marker) Antibody



IHC analysis of formalin-fixed, paraffin-embedded human testis. Negative tissue control using CR2/6683 at 2ug/ml in PBS for 30min RT. HIER: Tris/EDTA, pH9.0, 45min. 2°C: HRP-polymer, 30min. DAB, 5min.



SDS-PAGE Analysis of Purified Complement receptor type 2 Mouse Monoclonal Antibody (CR2/6683). Confirmation of Purity and Integrity of Antibody.



Formalin-fixed, paraffin-embedded Human Tonsil stained with CD21 Mouse Monoclonal Antibody (CR2/6683). HIER: Tris/EDTA, pH9.0, 45min. 2°C: HRP-polymer, 30min. DAB, 5min.

Specificity & Comments

Recognizes a protein of 140kDa, which is identified as the complement receptor 2 (CR2) or CD21. This protein is expressed strongly on mature B cells, follicular dendritic cells and weakly on immature thymocytes and T lymphocytes. In B-cell ontogeny, CD21 appears after the pre-B-stage, is maintained during peripheral B-cell development and is lost upon terminal differentiation into plasma cells. CD21 expression is also gradually lost after stimulation of B cells in vitro. CD21 functions as receptor for C3d, C3dg and iC3b Complement components, for EBV and for IFNalpha. CD21 binds to CD23 and associates with CD19, CD81 and Leu13 to form a large signal-transduction complex involved in B cell activation.

Limitations and Warranty

This antibody is available for research use only and is not approved for use in diagnosis. There are no warranties, expressed or implied, which extend beyond this description. Company is not liable for any personal injury or economic loss resulting from this product.

Supplied As

200ug/ml of Ab purified from Bioreactor Concentrate by Protein A/G. Prepared in 10mM PBS with 0.05% BSA & 0.05% azide. Also available WITHOUT BSA & azide at 1.0mg/ml.

Storage and Stability

Antibody with azide - store at 2 to 8°C. Antibody without azide - store at -20 to -80°C. Antibody is stable for 24 months. Non-hazardous. No MSDS required.

Research Areas

B Cell Markers, Complement System, Dendritic Cell Marker, Immunology