

## Recombinant Adipophilin / Perilipin-2 (Marker of Lipid Accumulation) Antibody

Mouse Monoclonal Antibody [Clone rADFP/9321]

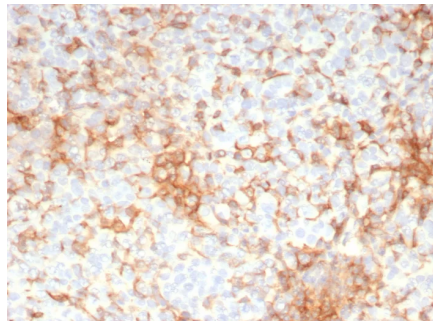
Catalog No	Format	Size
123-MSM8-P0	Purified Ab with BSA and Azide	200ug/ml
123-MSM8-P1	Purified Ab with BSA and Azide	200ug/ml
123-MSM8-P1ABX	Purified Ab WITHOUT BSA and Azide	1.0mg/ml

Applications	Tested Dillution
Immunohistochemistry (IHC)	1-2ug/ml

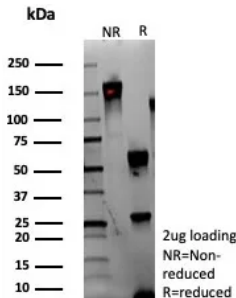
Product Details	
Clone	rADFP/9321
Gene Name	PLIN2
Immunogen	Recombinant fragment (around aa 249-376) of human Adipophilin (ADFP) protein (exact sequence is proprietary)
Host	Mouse
Clonality	Monoclonal
Isotype / Light Chain	IgG2b / Kappa
Mol. Weight of Antigen	48kDa
Cellular Localization	Cytoplasm.
Species Reactivity	Human
Positive Control	adrenal gland or cerebellum (IHC).liver

*\*Optimal dilution for a specific application should be determined.*

### Product Images for Recombinant Adipophilin / Perilipin-2 (Marker of Lipid Accumulation) Antibody



Formalin-fixed, paraffin-embedded human adrenal gland stained with Adipophilin Recombinant Mouse Monoclonal Antibody (rADFP/9321). HIER: Tris/EDTA, pH9.0, 45min. 2°C: HRP-polymer, 30min. DAB, 5min.



SDS-PAGE Analysis of Purified Adipophilin Recombinant Mouse Monoclonal Antibody (rADFP/9321). Confirmation of Integrity and Purity of Antibody.

### Specificity & Comments

Recognizes a protein of 48kDa, which is identified as Adipophilin. It belongs to the perilipin family, members of which coat intracellular lipid storage droplets. This protein is associated with the lipid globule surface membrane material, and maybe involved in development and maintenance of adipose tissue. However, it is not restricted to adipocytes as previously thought, but is found in a wide range of cultured cell lines, including fibroblasts, endothelial and epithelial cells, and tissues, such as lactating mammary gland, adrenal cortex, Sertoli and Leydig cells, and hepatocytes in alcoholic liver cirrhosis, suggesting that it may serve as a marker of lipid accumulation in diverse cell types and diseases.

---

### Research Areas

Cardiovascular

---

### Known Applications & Suggested Dilutions

Immunohistochemistry (Formalin-fixed) (1-2ug/ml for 30 minutes at RT),(Staining of formalin-fixed tissues requires boiling tissue sections in 10mM citrate buffer, pH 6.0, for 10-20 min followed by cooling at RT for 20 minutes),Optimal dilution for a specific application should be determined.

---

### Limitations and Warranty

This antibody is available for research use only and is not approved for use in diagnosis.

There are no warranties, expressed or implied, which extend beyond this description. Company is not liable for any personal injury or economic loss resulting from this product.

---

### Supplied As

200ug/ml of Ab produced in CHO cell mammalian-based expression system. Prepared in 10mM PBS with 0.05% BSA & 0.05% azide. Also available WITHOUT BSA & azide at 1.0mg/ml.

---

### Storage and Stability

Antibody with azide - store at 2 to 8°C. Antibody without azide - store at -20 to -80°C.Antibody is stable for 24 months. Non-hazardous. No MSDS required.

---