

Resistin (RETN) Antibody

Mouse Monoclonal Antibody [Clone RETN/4325]

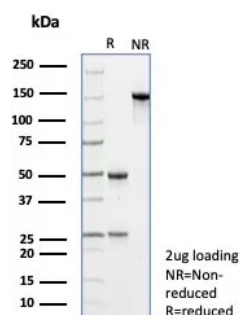
Catalog No	Format	Size
56729-MSM5-P0	Purified Ab with BSA and Azide	200ug/ml
56729-MSM5-P1	Purified Ab with BSA and Azide	200ug/ml
56729-MSM5-P1ABX	Purified Ab WITHOUT BSA and Azide	1.0mg/ml

Applications	Tested Dillution
Immunohistochemistry (IHC)	1-2ug/ml
Western Blot (WB)	2-4ug/ml

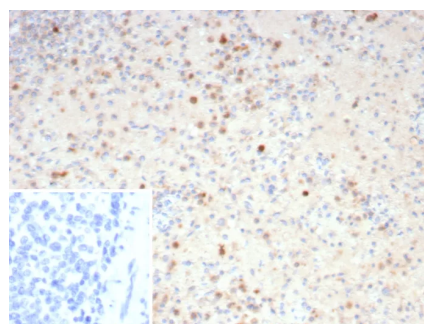
Product Details	
Clone	RETN/4325
Gene Name	RETN
Immunogen	Recombinant fragment of human RETN protein (around aa 19-108) (exact sequence is proprietary)
Host	Mouse
Clonality	Monoclonal
Isotype / Light Chain	IgG2 / Lambda
Mol. Weight of Antigen	13kDa
Cellular Localization	Secreted
Species Reactivity	Human
Positive Control	bone marrow or spleen. Human heart tissue lysate. Human heart

**Optimal dilution for a specific application should be determined.*

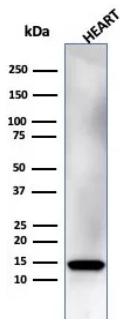
Product Images for Resistin (RETN) Antibody



SDS-PAGE Analysis of Purified Resistin Mouse Monoclonal Antibody (RETN/4325). Confirmation of Purity and Integrity of Antibody.



Formalin-fixed, paraffin-embedded human spleen stained with Resistin Mouse Monoclonal Antibody (RETN/4325). Inset: PBS instead of primary antibody; secondary only negative control.



Western blot analysis of human heart tissue lysate using Resistin Mouse Monoclonal Antibody (RETN/4325).

Specificity & Comments

The cysteine-rich, adipose tissue-specific, secretory factor resistin (resistance to Insulin) also known as ADSF, is a secreted hormone that potentially links obesity to diabetes. Resistin is rich in serine and cysteine residues and contains a unique cysteine repeat motif. Resistin and the resistin-like molecules share the characteristic cysteine composition and other signature features. Resistin-like ? is a secreted protein that has restricted tissue distribution and is most highly expressed in adipose tissue. Another family member, resistinlike ?, is a secreted protein expressed only in the gastrointestinal tract, particularly in the colon, in both mouse and human. Resistin-like ? expression is highest in proliferative epithelial cells and is markedly increased in tumors, suggesting a role in intestinal proliferation.

Research Areas

Cardiovascular, Immunology, Transcription Factors

Known Applications & Suggested Dilutions

Western Blot (2-4 ug/ml) | ,Immunohistochemistry (Formalin-fixed) (1-2ug/ml for 30 minutes at RT),(Staining of formalin-fixed tissues requires heating tissue sections in 10mM Tris with 1mM EDTA, pH 9.0, for 45 min at 95°C followed by cooling at RT for 20 minutes),Optimal dilution for a specific application should be determined.

Limitations and Warranty

This antibody is available for research use only and is not approved for use in diagnosis.

There are no warranties, expressed or implied, which extend beyond this description. Company is not liable for any personal injury or economic loss resulting from this product.

Supplied As

200ug/ml of Ab purified from Bioreactor Concentrate by Protein A/G. Prepared in 10mM PBS with 0.05% BSA & 0.05% azide. Also available WITHOUT BSA & azide at 1.0mg/ml.

Storage and Stability

Antibody with azide - store at 2 to 8°C. Antibody without azide - store at -20 to -80°C. Antibody is stable for 24 months. Non-hazardous. No MSDS required.