

Recombinant CD117 / c-Kit (Marker for Gastrointestinal Stromal Tumors) Antibody

Rabbit Monoclonal Antibody [Clone C117/8399R]

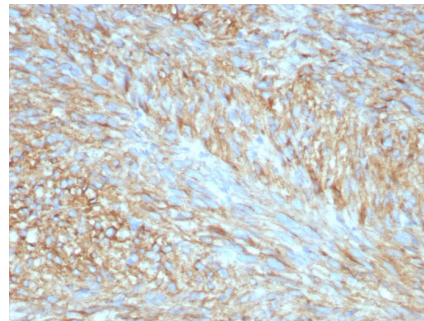
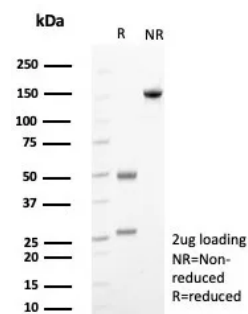
Catalog No	Format	Size
3815-RBM21-P0	Purified Ab with BSA and Azide	200ug/ml
3815-RBM21-P1	Purified Ab with BSA and Azide	200ug/ml
3815-RBM21-P1ABX	Purified Ab WITHOUT BSA and Azide	1.0mg/ml

Applications	Tested Dillution
Immunohistochemistry (IHC)	1-2ug/ml

Product Details	
Clone	C117/8399R
Gene Name	KIT
Immunogen	Recombinant fragment (around aa 50-250) of human KIT protein (exact sequence is proprietary)
Host	Rabbit
Clonality	Monoclonal
Isotype / Light Chain	IgG / Kappa
Mol. Weight of Antigen	~145kDa
Cellular Localization	Cell Surface. Cytoplasm.
Species Reactivity	Human
Positive Control	Gastrointestinal Stromal Tumor (GIST) or testicular germ cell tumor. Melanocytes in the basal layer of the epidermis and mast cells in the dermis of normal skin.

**Optimal dilution for a specific application should be determined.*

Product Images for Recombinant CD117 / c-Kit (Marker for Gastrointestinal Stromal Tumors) Antibody



SDS-PAGE Analysis of Purified CD117 Recombinant Rabbit Monoclonal Antibody (C117/8399R). Confirmation of Purity and Integrity of Antibody.

Formalin-fixed, paraffin-embedded human GIST stained with CD117 Recombinant Rabbit Monoclonal Antibody (C117/8399R) at 2ug/ml. HIER: Tris/EDTA, pH9.0, 45min. 2°C: HRP-polymer, 30min. DAB, 5min.

Specificity & Comments

This MAb recognizes a protein of 145kDa, identified as CD117/p145kit. It is found on a wide variety of tumor cells including follicular and papillary carcinoma of thyroid, adenocarcinomas from endometrium, lung, ovary, pancreas, and breast as well as malignant melanoma, endodermal sinus tumor, and small cell carcinoma. However, anti-CD117 has been particularly useful in differentiating gastrointestinal stromal tumors from Kaposi's sarcoma, tumors of smooth muscle origin, fibromatosis, and neural tumors of the GI tract. Anti-CD117 is also useful in recognizing myeloblasts in bone marrow biopsy and clot section.

Research Areas

Breast Cancer, Cardiovascular, AKT Signaling, Cardiac Stem Cells, Dendritic Cell Marker, Hematopoietic Stem Cells, Infectious Disease, Mast Cell Marker, Mesenchymal Stem Cell Differentiation, Signal Transduction, Transcription Factors

Known Applications & Suggested Dilutions

ELISA (2-4ug/ml | For coating, order Ab without BSA), Immunohistochemistry (Formalin-fixed) (1-2ug/ml for 30 minutes at RT), (Staining of formalin-fixed tissues requires heating tissue sections in 10mM Tris with 1mM EDTA, pH 9.0, for 45 min at 95°C followed by cooling at RT for 20 minutes), Optimal dilution for a specific application should be determined.

Limitations and Warranty

This antibody is available for research use only and is not approved for use in diagnosis.

There are no warranties, expressed or implied, which extend beyond this description. Company is not liable for any personal injury or economic loss resulting from this product.

Supplied As

200ug/ml of Ab purified from Bioreactor Concentrate by Protein A/G. Prepared in 10mM PBS with 0.05% BSA & 0.05% azide. Also available WITHOUT BSA & azide at 1.0mg/ml.

Storage and Stability

Antibody with azide - store at 2 to 8°C. Antibody without azide - store at -20 to -80°C. Antibody is stable for 24 months. Non-hazardous. No MSDS required.