

## Recombinant HLA Class 1 ABC (MHC I) Antibody

Rabbit Monoclonal Antibody [Clone MHC-I/8147R]

Catalog No	Format	Size
RBM3-8147-P0	Purified Ab with BSA and Azide at 200ug/ml	20 ug
RBM3-8147-P1	Purified Ab with BSA and Azide at 200ug/ml	100 ug
RBM3-8147-P1ABX	Purified Ab WITHOUT BSA and Azide at 1.0mg/ml	100 ug

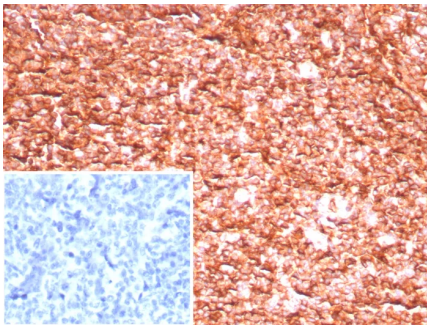
Applications	Tested Dillution	Note
Immunohistochemistry (IHC)	1-2ug/ml	30 min at RT. Staining of formalin-fixed tissues requires heating tissue sections in 10mM Tris with 1mM EDTA, pH 9.0, for 45 min at 95°C followed by cooling at RT for 20 minutes
Western Blot (WB)	2-4ug/ml	

### Product Details

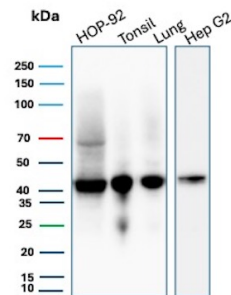
<b>Clone</b>	MHC-I/8147R
<b>Gene Name</b>	HLA-B
<b>Immunogen</b>	Recombinant fragment (around aa100-300) of human HLA-I protein (exact sequence is proprietary)
<b>Host</b>	Rabbit
<b>Clonality</b>	Monoclonal
<b>Isotype / Light Chain</b>	IgG / Kappa
<b>Mol. Weight of Antigen</b>	40/41kDa
<b>Cellular Localization</b>	Cell surface
<b>Species Reactivity</b>	Human
<b>Positive Control</b>	HOP-92, Lung, Hep G2, Human tonsil or lymph node. Human Spleen, Guinea pig Spleen, Human Lung or Guinea pig Lung

\*Optimal dilution for a specific application should be determined.

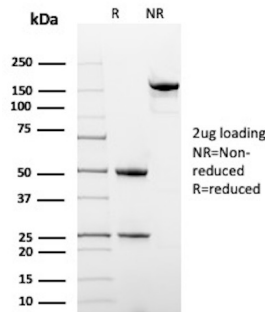
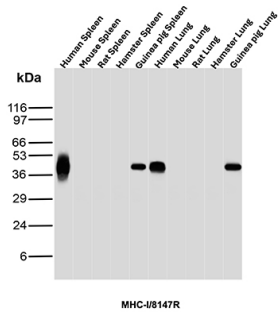
### Product Images for Recombinant HLA Class 1 ABC (MHC I) Antibody



Formalin-fixed, paraffin-embedded human tonsil stained with HLA 1 ABC Recombinant Rabbit Monoclonal Antibody (MHC-I/8147R). Inset: PBS instead of primary antibody; secondary only negative control.

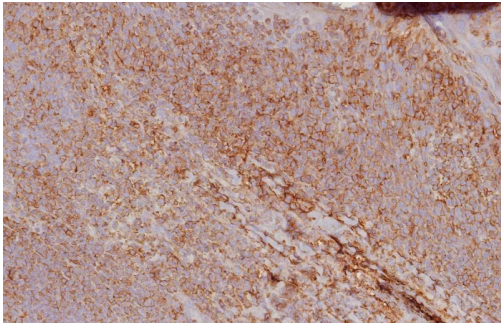


Western Blot Analysis of HOP-92, Tonsil, Lung and Hep G2 lysates using HLA Class 1 ABC Recombinant Rabbit Monoclonal Antibody (MHC-I/8147R).



Western Blot Analysis of Human Spleen, Mouse Spleen, Rat Spleen, Hamster Spleen, Guinea pig Spleen, Human Lung, Mouse Lung, Rat Lung, Hamster Lung and Guinea pig Lung tissue lysates using HLA Class 1 ABC Recombinant Rabbit Monoclonal Antibody (MHC-I/8147R).

SDS-PAGE Analysis of Purified HLA class I histocompatibility antigen, B alpha chain Recombinant Rabbit Monoclonal Antibody (MHC-I/8147R). Confirmation of Purity and Integrity of Antibody.



Formalin-fixed, paraffin-embedded human tonsil stained with HLA 1 ABC Recombinant Rabbit Monoclonal Antibody (MHC-I/8147R). HIER: Tris/EDTA, pH9.0, 45min. 2: HRP-polymer, 30min. DAB, 5min.

### Specificity & Comments

Major Histocompatibility Complex (MHC) is a genetic region on chromosomes composed of tightly linked highly polymorphic gene loci that encode cell surface specific proteins, depending on the structure and function of genes and coding products. We divide MHC into class II, class III and class I gene regions. Endogenous antigen presentation is presented by the major histocompatibility complex (MHC) pathway. Intracytoplasmic proteins are decomposed into peptides during protease degradation, which in turn are delivered by HSP41 and HSP90 proteins to TAP on the membrane. MHC I is widely distributed on the surface of almost all nucleated cells, including spleen, lymph nodes and thymus lymphocytes in normal tissues. It is also expressed in skin, lung, kidney, liver and heart tissues. It is also widely expressed in tumor tissues. MHC I molecular typing is related to the matching of organ transplantation and bone marrow transplantation, as well as a variety of autoimmune diseases.

### Limitations and Warranty

This antibody is available for research use only and is not approved for use in diagnosis. There are no warranties, expressed or implied, which extend beyond this description. Company is not liable for any personal injury or economic loss resulting from this product.

### Supplied As

200ug/ml of Ab purified from Bioreactor Concentrate by Protein A/G. Prepared in 10mM PBS with 0.05% BSA & 0.05% azide. Also available WITHOUT BSA & azide at 1.0mg/ml.

### Storage and Stability

Antibody with azide - store at 2 to 8°C. Antibody without azide - store at -20 to -80°C. Antibody is stable for 24 months. Non-hazardous. No MSDS required.

### Research Areas

Immunology, Infectious Disease