

Recombinant von Willebrand Factor / Factor VIII Related-Ag (Endothelial Marker) Antibody

Rabbit Monoclonal Antibody [Clone VWF/7979R]

Catalog No	Format	Size
7450-RBM20-P0	Purified Ab with BSA and Azide at 200ug/ml	20 ug
7450-RBM20-P1	Purified Ab with BSA and Azide at 200ug/ml	100 ug
7450-RBM20-P1ABX	Purified Ab WITHOUT BSA and Azide at 1.0mg/ml	100 ug

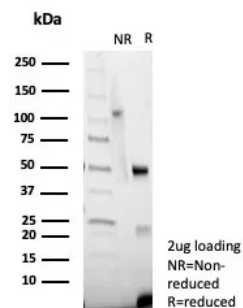
Applications	Tested Dillution	Note
Immunohistochemistry (IHC)	1-2ug/ml	30 min at RT. Staining of formalin-fixed tissues requires heating tissue sections in 10mM Tris with 1mM EDTA, pH 9.0, for 45 min at 95°C followed by cooling at RT for 20 minutes

Product Details

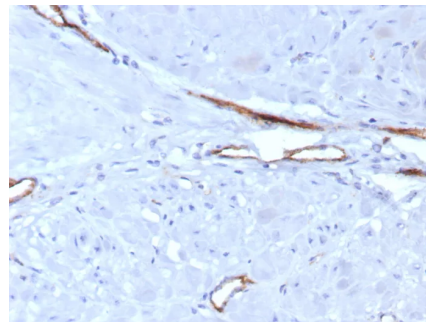
Clone	VWF/7979R
Gene Name	VWF
Immunogen	Recombinant fragment (around aa 1150-1250) of human vWF protein (exact sequence is proprietary)
Host	Rabbit
Clonality	Monoclonal
Isotype / Light Chain	IgG / Kappa
Mol. Weight of Antigen	250kDa
Cellular Localization	Cytoplasm.
Species Reactivity	Human
Positive Control	Human tonsil.

*Optimal dilution for a specific application should be determined.

Product Images for Recombinant von Willebrand Factor / Factor VIII Related-Ag (Endothelial Marker) Antibody



SDS-PAGE Analysis of Purified vWF Recombinant Rabbit Monoclonal Antibody (VWF/7979R). Confirmation of Purity and Integrity of Antibody.



Formalin-fixed, paraffin-embedded human uterus stained with vWF Recombinant Rabbit Monoclonal Antibody (VWF/7979R). HIER: Tris/EDTA, pH9.0, 45min. 2: HRP-polymer, 30min. DAB, 5min.

Specificity & Comments

Human von Willebrand factor (VWF or factor VIII-related antigen) is a 309 kDa multimeric plasma glycoprotein, important in the maintenance of hemostasis, it promotes adhesion of platelets to the sites of vascular injury by forming a molecular bridge between sub-endothelial collagen matrix and platelet-surface receptor complex GPIb-IX-V. Von Willebrand factor also acts as a chaperone for coagulation factor VIII, delivering it to the site of injury, stabilizing its heterodimeric structure and protecting it from premature clearance from plasma. Von Willebrand factor is synthesized by endothelial cells and is reported to be expressed in a number of tumors of vascular origin. IHC results aid in the classification of acute myeloid leukemia FAB type M7, angiosarcoma and epithelioid hemangioendothelioma.

Limitations and Warranty

This antibody is available for research use only and is not approved for use in diagnosis. There are no warranties, expressed or implied, which extend beyond this description. Company is not liable for any personal injury or economic loss resulting from this product.

Supplied As

200ug/ml of Ab purified from Bioreactor Concentrate by Protein A/G. Prepared in 10mM PBS with 0.05% BSA & 0.05% azide. Also available WITHOUT BSA & azide at 1.0mg/ml.

Storage and Stability

Antibody with azide - store at 2 to 8°C. Antibody without azide - store at -20 to -80°C. Antibody is stable for 24 months. Non-hazardous. No MSDS required.

Research Areas

Angiogenesis, Cardiovascular, Endothelial Cell Marker, Infectious Disease, Signal Transduction
