

Recombinant HER-2 / c-erbB-2 / neu / CD340 Antibody

Mouse Monoclonal Antibody [Clone rERBB2/9401]

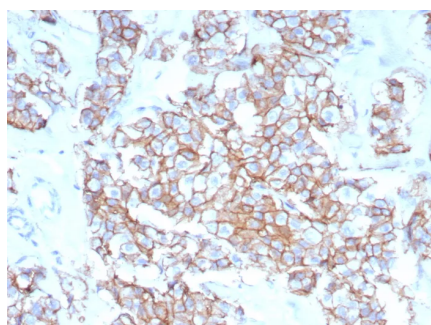
| Catalog No | Format | Size |
|------------------|-----------------------------------|----------|
| 2064-MSM48-P0 | Purified Ab with BSA and Azide | 200ug/ml |
| 2064-MSM48-P1 | Purified Ab with BSA and Azide | 200ug/ml |
| 2064-MSM48-P1ABX | Purified Ab WITHOUT BSA and Azide | 1.0mg/ml |

| Applications | Tested Dillution |
|----------------------------|------------------|
| Immunohistochemistry (IHC) | 1-2ug/ml |

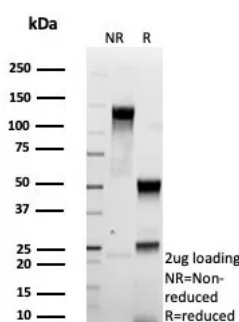
| Product Details | |
|------------------------|--|
| Clone | rERBB2/9401 |
| Gene Name | ERBB2 |
| Immunogen | Recombinant fragment (around aa1155-1255) of human ERBB2 protein (exact sequence is proprietary) |
| Host | Mouse |
| Clonality | Monoclonal |
| Isotype / Light Chain | IgG2b / Kappa |
| Mol. Weight of Antigen | 185kDa |
| Cellular Localization | Cell surface. |
| Species Reactivity | Human |
| Positive Control | SKBR-3 cells. Human breast carcinoma tissue (IHC). |

**Optimal dilution for a specific application should be determined.*

Product Images for Recombinant HER-2 / c-erbB-2 / neu / CD340 Antibody



IHC analysis of formalin-fixed, paraffin-embedded human breast carcinoma. Stained using rERBB2/9401 at 2ug/ml in PBS for 30min RT. HIER: Tris/EDTA, pH9.0, 45min. 2°C: HRP-polymer, 30min. DAB, 5min.



SDS-PAGE Analysis of Purified HER2 Recombinant Mouse Monoclonal Antibody (rERBB2/9401). Confirmation of Purity and Integrity of Antibody.

Specificity & Comments

Recognizes a protein of 185kDa, which is identified as c-erbB-2/HER-2/neu. Its epitope is localized in the extracellular domain. C-erbB-2/HER-2 is a member of the EGFR family. This MAb is specific and shows minimal cross-reaction with other members of the EGFR-family. Receptors of this family are located on the plasma membrane and consist of an extracellular ligand-binding domain that is connected to a large intracellular domain by a single transmembrane sequence. c-erbB-2/HER-2 protein is over-expressed in a variety of carcinomas especially those of breast and ovary.

Research Areas

Breast Cancer, Cardiovascular, Developmental Biology, AKT Signaling, Bladder Cancer, Infectious Disease, Signal Transduction, Transcription Factors

Known Applications & Suggested Dilutions

Immunohistochemistry (Formalin-fixed) (1-2ug/ml for 30 minutes at RT),(Staining of formalin-fixed tissues requires heating tissue sections in 10mM Tris with 1mM EDTA, pH 9.0, for 45 min at 95°C followed by cooling at RT for 20 minutes),Optimal dilution for a specific application should be determined.

Limitations and Warranty

This antibody is available for research use only and is not approved for use in diagnosis.

There are no warranties, expressed or implied, which extend beyond this description. Company is not liable for any personal injury or economic loss resulting from this product.

Supplied As

200ug/ml of Ab produced in CHO cell mammalian-based expression system. Prepared in 10mM PBS with 0.05% BSA & 0.05% azide. Also available WITHOUT BSA & azide at 1.0mg/ml.

Storage and Stability

Antibody with azide - store at 2 to 8°C. Antibody without azide - store at -20 to -80°C.Antibody is stable for 24 months. Non-hazardous. No MSDS required.