

## Recombinant MSH6 (DNA Mismatch Repair Protein) Antibody

Rabbit Monoclonal Antibody [Clone MSH6/7064R]

Catalog No	Format	Size
2956-RBM17-P0	Purified Ab with BSA and Azide at 200ug/ml	20 ug
2956-RBM17-P1	Purified Ab with BSA and Azide at 200ug/ml	100 ug
2956-RBM17-P1ABX	Purified Ab WITHOUT BSA and Azide at 1.0mg/ml	100 ug

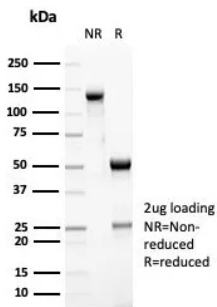
Applications	Tested Dillution	Note
Immunohistochemistry (IHC)	1-2ug/ml	30 min at RT. Staining of formalin-fixed tissues requires heating tissue sections in 10mM Tris with 1mM EDTA, pH 9.0, for 45 min at 95°C followed by cooling at RT for 20 minutes
Western Blot (WB)	2-4ug/ml	

### Product Details

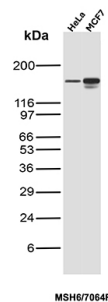
<b>Clone</b>	MSH6/7064R
<b>Gene Name</b>	MSH6
<b>Immunogen</b>	Recombinant fragment (around aa 374-540) of human MSH6 protein (exact sequence is proprietary)
<b>Host</b>	Rabbit
<b>Clonality</b>	Monoclonal
<b>Isotype / Light Chain</b>	IgG / Kappa
<b>Mol. Weight of Antigen</b>	163kDa
<b>Cellular Localization</b>	Nucleus.
<b>Species Reactivity</b>	Human
<b>Positive Control</b>	HCT116 MCF-7 or HeLa cells. Human colon carcinoma or tonsil.

\*Optimal dilution for a specific application should be determined.

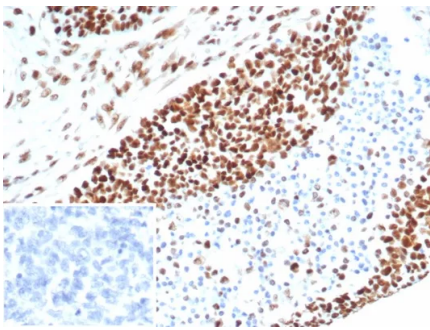
### Product Images for Recombinant MSH6 (DNA Mismatch Repair Protein) Antibody



SDS-PAGE Analysis of Purified MSH6 Recombinant Rabbit Monoclonal Antibody (MSH6/7064R). Confirmation of Purity and Integrity of Antibody.



Western Blot Analysis of HeLa and MCF7 cell lysates using MSH6 Mouse Monoclonal Antibody (MSH6/7064R)



Formalin-fixed, paraffin-embedded human ovarian carcinoma stained with MSH6 Recombinant Rabbit Monoclonal Antibody (MSH6/7064R). Inset: PBS instead of primary antibody; secondary only negative control.

### Specificity & Comments

The finding that mutations in DNA mismatch repair genes are associated with hereditary nonpolyposis colorectal cancer (HNPCC) has resulted in considerable interest in the understanding of the mechanism of DNA mismatch repair. Initially, inherited mutations in the MSH2 and MLH1 homologs of the bacterial DNA mismatch repair genes mutS and mutL were demonstrated at high frequency in HNPCC and were shown to be associated with microsatellite instability. A member of the mismatch repair family, GTBP (also designated MSH6), is an MSH2-related protein that binds to DNA containing G/T mismatches. Findings suggest that the mismatch-binding factor in human cells is composed of a heterodimer of GTBP and MSH2.

### Limitations and Warranty

This antibody is available for research use only and is not approved for use in diagnosis. There are no warranties, expressed or implied, which extend beyond this description. Company is not liable for any personal injury or economic loss resulting from this product.

### Supplied As

200ug/ml of Ab purified from Bioreactor Concentrate by Protein A/G. Prepared in 10mM PBS with 0.05% BSA & 0.05% azide. Also available WITHOUT BSA & azide at 1.0mg/ml.

### Storage and Stability

Antibody with azide - store at 2 to 8°C. Antibody without azide - store at -20 to -80°C. Antibody is stable for 24 months. Non-hazardous. No MSDS required.

### Research Areas

Colon Cancer, Infectious Disease, Nuclear Marker