

Recombinant Somatostatin (SST) Antibody

Rabbit Monoclonal Antibody [Clone SST/7200R]

Catalog No	Format	Size
6750-RBM2-P0	Purified Ab with BSA and Azide at 200ug/ml	20 ug
6750-RBM2-P1	Purified Ab with BSA and Azide at 200ug/ml	100 ug
6750-RBM2-P1ABX	Purified Ab WITHOUT BSA or Azide at 1.0mg/ml	100 ug

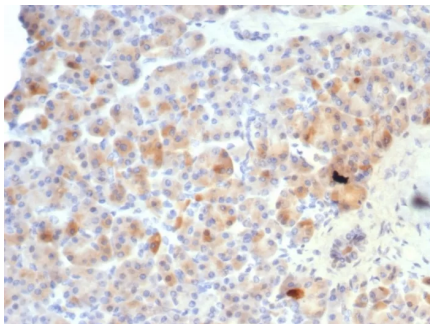
Applications	Tested Dillution	Note
Immunohistochemistry (IHC)	1-2ug/ml	30 min at RT. Staining of formalin-fixed tissues requires heating tissue sections in 10mM Tris with 1mM EDTA, pH 9.0, for 45 min at 95°C followed by cooling at RT for 20 minutes
Western Blot (WB)	2-4ug/ml	

Product Details

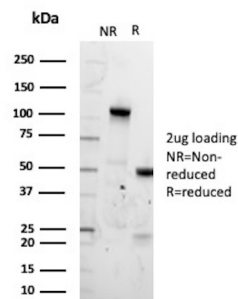
Clone	SST/7200R
Immunogen	Recombinant fragment (around aa89-105) of the human Somatostatin protein (exact sequence is proprietary)
Host	Rabbit
Clonality	Monoclonal
Isotype / Light Chain	IgG / Kappa
Mol. Weight of Antigen	12.74kDa
Cellular Localization	Secreted
Species Reactivity	Human
Positive Control	Human pancreas.

*Optimal dilution for a specific application should be determined.

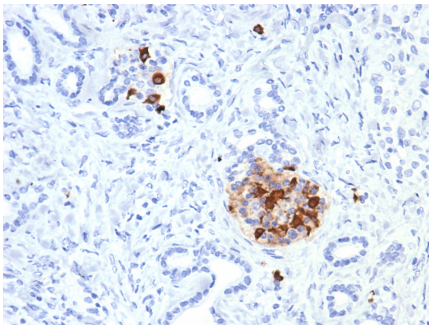
Product Images for Recombinant Somatostatin (SST) Antibody



Formalin-fixed, paraffin-embedded human pancreas stained with Somatostatin Recombinant Rabbit Monoclonal Antibody (SST/7200R). HIER: Tris/EDTA, pH9.0, 45min. 2°C: HRP-polymer, 30min. DAB, 5min.



SDS-PAGE Analysis of Purified Somatostatin | Somatostatin-28 | Somatostatin-14 | Neuronostatin Recombinant Rabbit Monoclonal Antibody (SST/7200R). Confirmation of Purity and Integrity of Antibody.



Formalin-fixed, paraffin-embedded human pancreas stained with Somatostatin Recombinant Rabbit Monoclonal Antibody (SST/7200R). HIER: Tris/EDTA, pH9.0, 45min. 2°C: HRP-polymer, 30min. DAB, 5min.

Specificity & Comments

Somatostatin is a regulatory hormone that is expressed throughout the body and inhibits the release of numerous secondary hormones by binding to highaffinity G protein-coupled somatostatin receptors. This cyclic tetradecapeptide inhibits the secretion of many important hormones, including somatotropin (also designated growth hormone, or GH), Insulin and glucagon. Somatostatin is found in both the hypothalamus and pancreas. Somatostatin is thought to be involved in the regulation of Insulin synthesis. The hormone somatostatin has active 14 amino acid and 28 amino acid forms that are produced by alternate cleavage of the single preproprotein encoded by this gene. In the cerebellum, Somatostatin-14 and Somatostatin-28 are highly expressed at birth and in the adult stage, respectively. Somatostatin affects rates of neurotransmission in the central nervous system and proliferation of both normal and tumorigenic cells. The gene encoding Somatostatin maps to human chromosome 3q27.3.

Limitations and Warranty

This antibody is available for research use only and is not approved for use in diagnosis. There are no warranties, expressed or implied, which extend beyond this description. Company is not liable for any personal injury or economic loss resulting from this product.

Supplied As

200ug/ml of Ab produced in a mammalian-based expression system. Prepared in 10mM PBS with 0.05% BSA & 0.05% azide. Also available WITHOUT BSA & azide at 1.0mg/ml.

Storage and Stability

Antibody with azide - store at 2 to 8 °C. Antibody without azide - store at -20 to -80 °C. Antibody is stable for 24 months. Non-hazardous. No MSDS required.