

Recombinant CD6 (Negative Marker of T-regulatory Cells) Antibody

Mouse Monoclonal Antibody [Clone rC6/372]

Catalog No	Format	Size
923-MSM6-P0	Purified Ab with BSA and Azide at 200ug/ml	20 ug
923-MSM6-P1	Purified Ab with BSA and Azide at 200ug/ml	100 ug
923-MSM6-P1ABX	Purified Ab WITHOUT BSA or Azide at 1.0mg/ml	100 ug

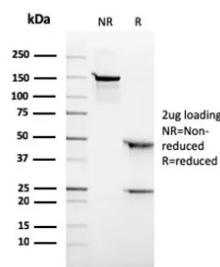
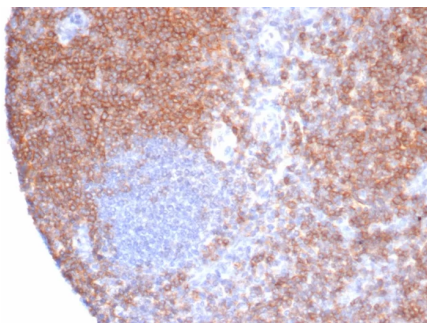
Applications	Tested Dillution	Note
Immunohistochemistry (IHC)	1-2ug/ml	30 min at RT. Staining of formalin-fixed tissues requires heating tissue sections in 10mM Tris with 1mM EDTA, pH 9.0, for 45 min at 95°C followed by cooling at RT for 20 minutes
Western Blot (WB)	2-4ug/ml	

Product Details

Clone	rC6/372
Immunogen	Recombinant full-length human CD6 protein
Host	Mouse
Clonality	Monoclonal
Isotype / Light Chain	IgG1 / Kappa
Mol. Weight of Antigen	71.8kDa
Cellular Localization	Cell membrane, Secreted
Species Reactivity	Human
Positive Control	CCRF-CEM or Jurkat cells. Human tonsil or lymph node. MOLT-4

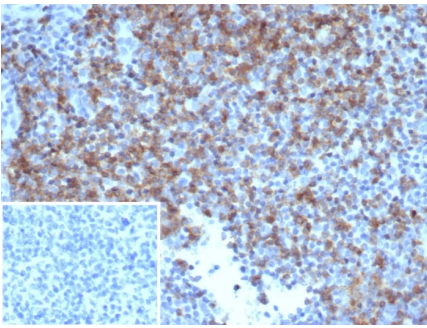
*Optimal dilution for a specific application should be determined.

Product Images for Recombinant CD6 (Negative Marker of T-regulatory Cells) Antibody



Formalin-fixed, paraffin-embedded human tonsil stained with CD6 Recombinant Mouse Monoclonal Antibody (rC6/372). HIER: Tris/EDTA, pH9.0, 45min. 2°C: HRP-polymer, 30min. DAB, 5min.

SDS-PAGE Analysis of Purified CD6 Recombinant Mouse Monoclonal Antibody (rC6/372) Confirmation of Purity and Integrity of Antibody.



Formalin-fixed, paraffin-embedded human tonsil stained with CD6 Recombinant Mouse Monoclonal Antibody (rC6/372). Inset: PBS instead of primary antibody; secondary only negative control.

Specificity & Comments

CD6 is a type I transmembrane glycoprotein that contains a 24-amino acid signal sequence, three extracellular scavenger receptor cysteine-rich (SRCR) domains, a membrane-spanning domain and a 44-amino acid cytoplasmic domain. The CD6 glycoprotein is tyrosine phosphorylated during TCR-mediated T cell activation. CD6 shows significant homology to CD5. CD6 is present on mature thymocytes, peripheral T cells and a subset of B cells. Antibodies to CD6 are used to deplete T cells from bone marrow transplants to prevent graft versus host disease.Â ?

Limitations and Warranty

This antibody is available for research use only and is not approved for use in diagnosis. There are no warranties, expressed or implied, which extend beyond this description. Company is not liable for any personal injury or economic loss resulting from this product.

Supplied As

200ug/ml of Ab produced in a mammalian-based expression system. Prepared in 10mM PBS with 0.05% BSA & 0.05% azide. Also available WITHOUT BSA & azide at 1.0mg/ml.

Storage and Stability

Antibody with azide - store at 2 to 8 °C. Antibody without azide - store at -20 to -80 °C. Antibody is stable for 24 months. Non-hazardous. No MSDS required.
