

Recombinant Cytokeratin 7 (Glandular and Transitional Epithelial Marker) Antibody

Rabbit Monoclonal Antibody [Clone KRT7/8121R]

Catalog No	Format	Size
3855-RBM17-P0	Purified Ab with BSA and Azide at 200ug/ml	20 ug
3855-RBM17-P1	Purified Ab with BSA and Azide at 200ug/ml	100 ug
3855-RBM17-P1ABX	Purified Ab WITHOUT BSA and Azide at 1.0mg/ml	100 ug

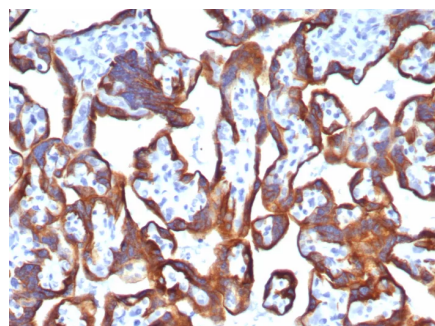
Applications	Tested Dillution	Note
Immunohistochemistry (IHC)	1-2ug/ml	30 min at RT. Staining of formalin-fixed tissues requires heating tissue sections in 10mM Tris with 1mM EDTA, pH 9.0, for 45 min at 95°C followed by cooling at RT for 20 minutes

Product Details

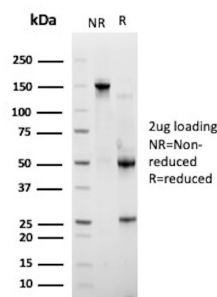
Clone	KRT7/8121R
Gene Name	KRT7
Immunogen	Recombinant fragment (around aa1-200) of human KRT7 protein (exact sequence is proprietary)
Host	Rabbit
Clonality	Monoclonal
Isotype / Light Chain	IgG / Kappa
Mol. Weight of Antigen	55kDa
Cellular Localization	Cytoplasm.
Species Reactivity	Human
Positive Control	Carcinoma of ovary Cervix lung or breast.

**Optimal dilution for a specific application should be determined.*

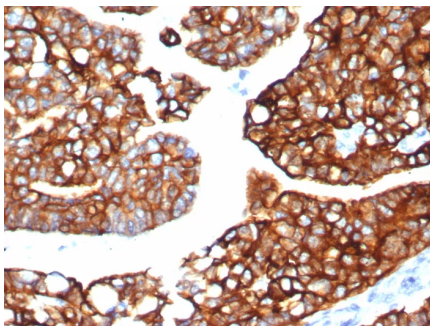
Product Images for Recombinant Cytokeratin 7 (Glandular and Transitional Epithelial Marker) Antibody



Formalin-fixed, paraffin-embedded human placenta stained with Cytokeratin 7 Recombinant Rabbit Monoclonal Antibody (KRT7/8121R). HIER: Tris/EDTA, pH9.0, 45min. 2: HRP-polymer, 30min. DAB, 5min.



SDS-PAGE Analysis of Purified Keratin, type II cytoskeletal 7 Recombinant Rabbit Monoclonal Antibody (KRT7/8121R). Confirmation of Purity and Integrity of Antibody.



Formalin-fixed, paraffin-embedded human lung carcinoma stained with Cytokeratin 7 Recombinant Rabbit Monoclonal Antibody (KRT7/8121R). HIER: Tris/EDTA, pH9.0, 45min. 2: HRP-polymer, 30min. DAB, 5min.

Specificity & Comments

Cytokeratin 7 in humans is a protein encoded by the KRT7 gene. It is always as a keratin pair with Cytokeratin 19. Cytokeratin 7 is expressed on most ductal and glandular epithelium including lung, breast, bladder and female genital tract, but not in most gastrointestinal epithelium, prostate, hepatocyte and squamous epithelium. In tumor tissues, its expression is absent in colon cancer, prostate cancer and squamous carcinomas. Cytokeratin 7 is often used in concert with Cytokeratin 20 and CDX-2 to aid in distinguishing ovarian, pulmonary and breast carcinomas (CK7+) from colon carcinomas (CK7-).

Supplied As

200ug/ml of Ab purified from Bioreactor Concentrate by Protein A/G. Prepared in 10mM PBS with 0.05% BSA & 0.05% azide. Also available WITHOUT BSA & azide at 1.0mg/ml.

Storage and Stability

Antibody with azide - store at 2 to 8°C. Antibody without azide - store at -20 to -80°C. Antibody is stable for 24 months. Non-hazardous. No MSDS required.

Research Areas

Developmental Biology

Limitations and Warranty

This antibody is available for research use only and is not approved for use in diagnosis. There are no warranties, expressed or implied, which extend beyond this description. Company is not liable for any personal injury or economic loss resulting from this product.
