

Recombinant Calnexin (Endoplasmic Reticulum Marker) Antibody

Rabbit Monoclonal Antibody [Clone CANX/9147R]

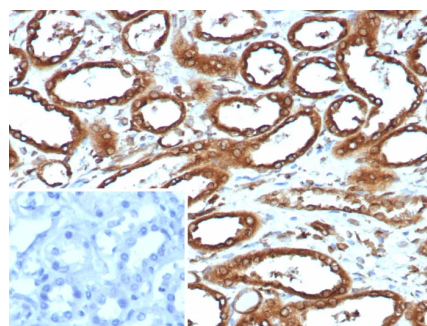
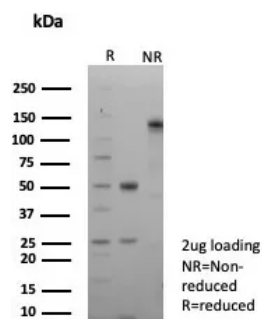
| Catalog No | Format | Size |
|----------------|-----------------------------------|----------|
| 821-RBM6-P0 | Purified Ab with BSA and Azide | 200ug/ml |
| 821-RBM6-P1 | Purified Ab with BSA and Azide | 200ug/ml |
| 821-RBM6-P1ABX | Purified Ab WITHOUT BSA and Azide | 1.0mg/ml |

| Applications | Tested Dillution |
|----------------------------|------------------|
| Immunohistochemistry (IHC) | 1-2ug/ml |
| Western Blot (WB) | 2-4ug/ml |

| Product Details | |
|------------------------|---|
| Clone | CANX/9147R |
| Gene Name | CANX |
| Immunogen | Recombinant N-terminal fragment of human Calnexin protein (around aa 1-300) (exact sequence is proprietary) |
| Host | Rabbit |
| Clonality | Monoclonal |
| Isotype / Light Chain | IgG / Kappa |
| Mol. Weight of Antigen | 90kDa |
| Cellular Localization | Cytoplasm. |
| Species Reactivity | Human |
| Positive Control | HeLa MCF-7 or U2OS cells. Kidney or small intestine. |

**Optimal dilution for a specific application should be determined.*

Product Images for Recombinant Calnexin (Endoplasmic Reticulum Marker) Antibody



SDS-PAGE Analysis of Purified Calnexin Recombinant Rabbit Monoclonal Antibody (CANX/9147R). Confirmation of Integrity and Purity of Antibody.

Formalin-fixed, paraffin-embedded human renal cell carcinoma stained with Calnexin Recombinant Rabbit Monoclonal Antibody (CANX/9147R). HIER: Tris/EDTA, pH9.0, 45min. 2°C: HRP-polymer, 30min. DAB, 5min.

Specificity & Comments

It recognizes a protein of 90kDa, which is identified as Calnexin. Secretory and transmembrane proteins are synthesized on polysomes and translocate into the endoplasmic reticulum (ER) where they are often modified by the formation of disulfide bonds, amino-linked glycosylation and folding. To help proteins fold properly, the ER contains a pool of molecular chaperones including calnexin. It is a calcium-binding, endoplasmic reticulum (ER)-associated protein that interacts transiently with newly synthesized N-linked glycoproteins, facilitating protein folding and assembly. It may also play a central role in the quality control of protein folding by retaining incorrectly folded protein subunits within the ER for degradation.

Research Areas

Immunology, Cytokine Signaling, Infectious Disease

Known Applications & Suggested Dilutions

ELISA (Use Ab at 2-4ug/ml for coating) (Order Ab without BSA) | Western Blot (1-2ug/ml) | ,Immunohistochemistry (Formalin-fixed) (1-2ug/ml for 30 minutes at RT),(Staining of formalin-fixed tissues requires heating tissue sections in 10mM Tris with 1mM EDTA, pH 9.0, for 45 min at 95°C followed by cooling at RT for 20 minutes),Optimal dilution for a specific application should be determined.

Limitations and Warranty

This antibody is available for research use only and is not approved for use in diagnosis.

There are no warranties, expressed or implied, which extend beyond this description. Company is not liable for any personal injury or economic loss resulting from this product.

Supplied As

200ug/ml of Ab purified from Bioreactor Concentrate by Protein A/G. Prepared in 10mM PBS with 0.05% BSA & 0.05% azide. Also available WITHOUT BSA & azide at 1.0mg/ml.

Storage and Stability

Antibody with azide - store at 2 to 8°C. Antibody without azide - store at -20 to -80°C.Antibody is stable for 24 months. Non-hazardous. No MSDS required.