

Cytokeratin, pan (Epithelial Marker) Antibody

Rabbit Antibody [Clone MonoPoly/4999R]

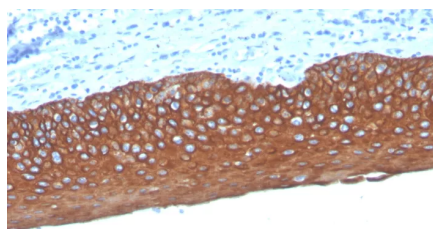
Catalog No	Format	Size
RBMP51-4999-P0	Purified Ab with BSA and Azide at 200ug/ml	20 ug
RBMP51-4999-P1	Purified Ab with BSA and Azide at 200ug/ml	100 ug
RBMP51-4999-P1ABX	Purified Ab WITHOUT BSA and Azide at 1.0mg/ml	100 ug

Applications	Tested Dillution	Note
Flow Cytometry (Flow)	1-2ug/million cells	
Immunofluorescence (IF)	1-3ug/ml	
Immunohistochemistry (IHC)	1-2ug/ml	30 min at RT. Staining of formalin-fixed tissues requires heating tissue sections in 10mM Tris with 1mM EDTA, pH 9.0, for 45 min at 95°C followed by cooling at RT for 20 minutes
Western Blot (WB)	2-4ug/ml	

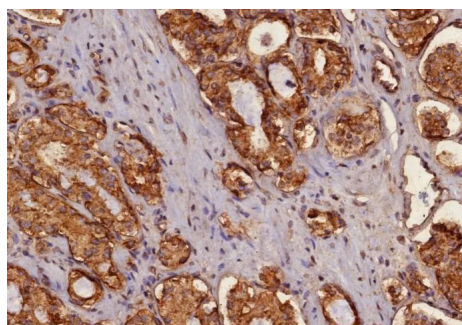
Product Details	
Clone	MonoPoly/4999R
Gene Name	KRT77
Immunogen	Recombinant fragments and/or synthetic peptides of human Cytokeratin proteins (exact sequences are proprietary)
Host	Rabbit
Clonality	
Isotype / Light Chain	IgG / Kappa
Mol. Weight of Antigen	40-67kDa (Multiple)
Cellular Localization	Cytoplasm.
Species Reactivity	Human
Positive Control	Adeno- or Squamous carcinomas. HeLa or MCF-7 cells. Human skin, Lung, HCT116

**Optimal dilution for a specific application should be determined.*

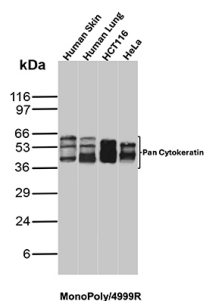
Product Images for Cytokeratin, pan (Epithelial Marker) Antibody



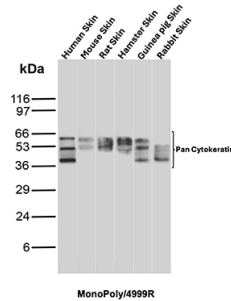
Formalin-fixed, paraffin-embedded human tonsil stained with Cytokeratin, pan Rabbit MonoPoly Antibody (MonoPoly/4999R).



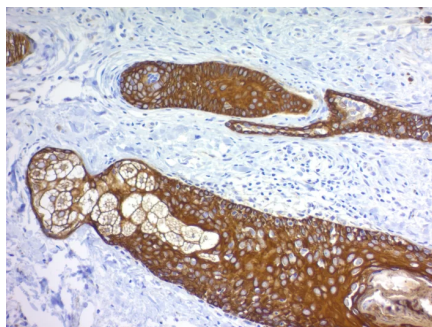
Formalin-fixed, paraffin-embedded human prostate carcinoma stained with Cytokeratin, pan Rabbit MonoPoly Antibody (MonoPoly/4999R).



Western Blot Analysis of Human Skin, Human Lung, HCT116 and HeLa lysates using Cytokeratin, pan Recombinant Rabbit Monoclonal Antibody (MonoPoly/4999R).



Western Blot Analysis of skin tissue lysates of different species using Cytokeratin, pan Recombinant Rabbit Monoclonal Antibody (MonoPoly/4999R).



Formalin-fixed, paraffin-embedded human basal cell carcinoma stained with Cytokeratin, pan Rabbit MonoPoly Antibody (MonoPoly/4999R).

Specificity & Comments

MonoPoly antibodies are designed by pooling several monospecific, recombinant monoclonal antibodies against a target. MonoPoly antibodies are a kind of synthetic polyclonal antibodies that can be produced in unlimited quantity with a strict lot-to-lot consistency. These antibodies are highly specific with exquisite sensitivity and a single MonoPoly antibody can be used for a variety of applications. This antibody cocktail recognizes acidic (Type I or LMW) and basic (Type II or HMW) cytokeratins, with 67kDa (CK1); 64kDa (CK3); 59kDa (CK4); 58kDa (CK5); 56kDa (CK6); 55kDa (CK7); 52kDa (CK8); 56.5kDa (CK10); 53kDa (CK13); 50kDa (CK14); 50kDa (CK15); 48kDa (CK16); 46kDa (CK17); 45kDa (CK18), 40kDa (CK19) and 46kDa (CK20). Many studies have shown the usefulness of keratins as markers in cancer research and tumor diagnosis. This antibody is a broad-spectrum anti pan-cytokeratin antibody cocktail, which differentiates epithelial tumors from non-epithelial tumors e.g. squamous vs. adenocarcinoma of the lung, liver carcinoma, breast cancer, and esophageal cancer. It is useful in characterizing the source of various neoplasms and to study the distribution of cytokeratin containing cells in epithelia during normal development and during the development of epithelial neoplasms.

Limitations and Warranty

This antibody is available for research use only and is not approved for use in diagnosis. There are no warranties, expressed or implied, which extend beyond this description. Company is not liable for any personal injury or economic loss resulting from this product.

Supplied As

200ug/ml of Ab purified from Bioreactor Concentrate by Protein A/G. Prepared in 10mM PBS with 0.05% BSA & 0.05% azide. Also available WITHOUT BSA & azide at 1.0mg/ml.

Storage and Stability

Antibody with azide - store at 2 to 8°C. Antibody without azide - store at -20 to -80°C. Antibody is stable for 24 months. Non-hazardous. No MSDS required.