

Recombinant Rb1 (Tumor Suppressor Protein) Antibody

Mouse Monoclonal Antibody [Clone rRB1/8060]

Catalog No	Format	Size
5925-MSM7-P0	Purified Ab with BSA and Azide at 200ug/ml	20 ug
5925-MSM7-P1	Purified Ab with BSA and Azide at 200ug/ml	100 ug
5925-MSM7-P1ABX	Purified Ab WITHOUT BSA and Azide at 1.0mg/ml	100 ug

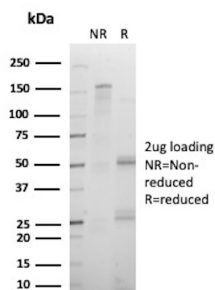
Applications	Tested Dillution	Note
Immunohistochemistry (IHC)	1-2ug/ml	30 min at RT. Staining of formalin-fixed tissues requires heating tissue sections in 10mM Tris with 1mM EDTA, pH 9.0, for 45 min at 95°C followed by cooling at RT for 20 minutes
Western Blot (WB)	2-4ug/ml	

Product Details

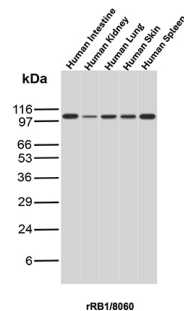
Clone	rRB1/8060
Gene Name	RB1
Immunogen	Recombinant human Rb1 protein fragment of 283 amino acid residues.
Host	Mouse
Clonality	Monoclonal
Isotype / Light Chain	IgG1 / Kappa
Mol. Weight of Antigen	105kDa
Cellular Localization	Nucleus.
Species Reactivity	Human, Mouse
Positive Control	A431 or BT-20 cells. Human breast or colon carcinoma.[HeLa, Intestine, Kidney, Lung, Skin, Spleen.

*Optimal dilution for a specific application should be determined.

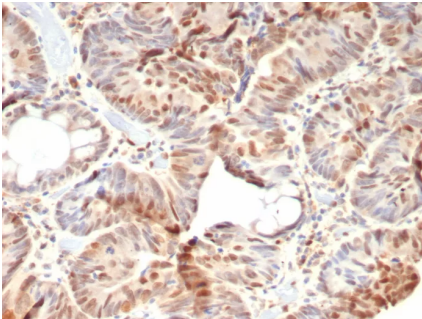
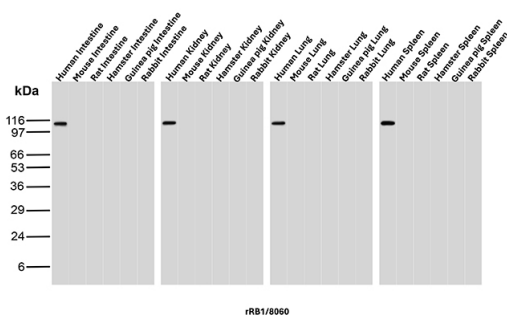
Product Images for Recombinant Rb1 (Tumor Suppressor Protein) Antibody



SDS-PAGE Analysis of Purified Retinoblastoma-associated protein Recombinant Mouse Monoclonal Antibody (rRB1/8060). Confirmation of Purity and Integrity of Antibody.



Western Blot Analysis of Human Intestine, Human Kidney, Human Lung, Human Skin and Human Spleen tissue lysates using Retinoblastoma Recombinant Mouse Monoclonal Antibody (rRB1/8060).



Western Blot Analysis of Intestine, Kidney, Lung and Spleen tissue lysates of different species using Retinoblastoma Recombinant Mouse Monoclonal Antibody (rRB1/8060).

Formalin-fixed, paraffin-embedded human colon carcinoma stained with Retinoblastoma (Rb1) Monoclonal Antibody (rRB1/8060). HIER: Tris/EDTA, pH9.0, 45min. 2°C: HRP-polymer, 30min. DAB, 5min.

Specificity & Comments

Recognizes a 105kDa phosphoprotein, identified as retinoblastoma (Rb) gene product. Its epitope is localized between aa 703-772. It shows no cross reaction with p107 or p130. It specifically stains the nuclei of BT-20 cells and primary human foreskin fibroblast (HFF) cells. It does not stain the Rb-negative BT549 cells. It reacts with the hyperphosphorylated as well as the un (under) phosphorylated form of the Rb protein. Retinoblastoma gene product plays a key role in cell cycle control. It has been identified as a tumor suppressor gene whose loss of its function leads to tumor development. It is widely expressed in a variety of human tissues including breast, esophageal, squamous cell and cervical carcinoma.

Supplied As

200ug/ml of Ab produced in HEK293 cell mammalian-based expression system. Prepared in 10mM PBS with 0.05% BSA & 0.05% azide. Also available WITHOUT BSA & azide at 1.0mg/ml.

Storage and Stability

Antibody with azide - store at 2 to 8°C. Antibody without azide - store at -20 to -80°C. Antibody is stable for 24 months. Non-hazardous. No MSDS required.

Research Areas

Bladder Cancer, Breast Cancer, Cardiovascular, Infectious Disease, Lung Cancer, Nuclear Marker, Transcription Factors

Limitations and Warranty

This antibody is available for research use only and is not approved for use in diagnosis. There are no warranties, expressed or implied, which extend beyond this description. Company is not liable for any personal injury or economic loss resulting from this product.