

## Recombinant Calbindin 1 (CALB1) Antibody

Mouse Monoclonal Antibody [Clone rCALB1/8499]

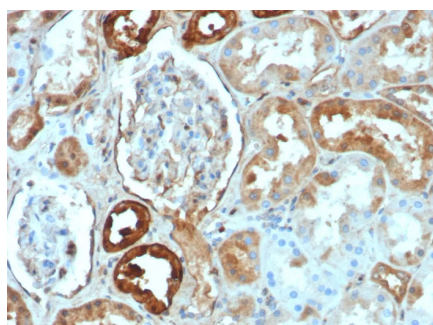
Catalog No	Format	Size
793-MSM7-P0	Purified Ab with BSA and Azide	200ug/ml
793-MSM7-P1	Purified Ab with BSA and Azide	200ug/ml
793-MSM7-P1ABX	Purified Ab WITHOUT BSA and Azide	1.0mg/ml

Applications	Tested Dillution
Immunohistochemistry (IHC)	1-2ug/ml

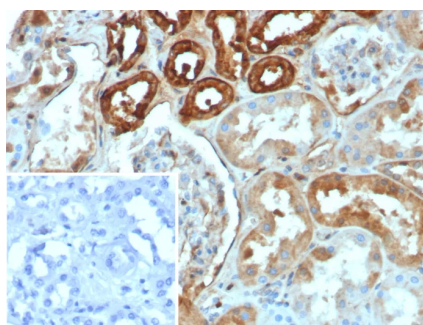
Product Details	
Clone	rCALB1/8499
Gene Name	CALB1
Immunogen	Recombinant fragment (around aa 7-96) of human CALB1 protein (exact sequence is proprietary)
Host	Mouse
Clonality	Monoclonal
Isotype / Light Chain	IgG1 / Kappa
Mol. Weight of Antigen	52kDa
Cellular Localization	Nucleus. Cytoplasm.
Species Reactivity	Human
Positive Control	293T or HepG2 cells. Human prostate kidney or liver. lung pancreas

*\*Optimal dilution for a specific application should be determined.*

### Product Images for Recombinant Calbindin 1 (CALB1) Antibody



Formalin-fixed, paraffin-embedded human kidney stained with Calbindin 1 Recombinant Mouse Monoclonal Antibody (rCALB1/8499). HIER: Tris/EDTA, pH9.0, 45min. 2°C: HRP-polymer, 30min. DAB, 5min.



Formalin-fixed, paraffin-embedded human kidney stained with Calbindin 1 Recombinant Mouse Monoclonal Antibody (rCALB1/8499). Inset: PBS instead of primary antibody; secondary only negative control.

### Specificity & Comments

The family of EF-hand type Ca<sup>2+</sup>-binding proteins includes Calbindin D28K, Calbindin D9K, S-100  $\beta$  and  $\gamma$ , Calgranulin A (also designated MRP8), Calgranulin B (also designated MRP14), Calgranulin C and the Parvalbumin family members, including Parvalbumin  $\beta$  and Parvalbumin  $\gamma$  (also designated oncomodulin). Calbindin D28K, also known as calbindin, CALB1, D-28K or vitamin D-dependent calcium-binding protein, is a 261-amino acid protein with 6 EF-hand domains, 4 of which are active calcium-binding domains. Expressed in brain, ovary, uterus, testis, pancreas, liver, kidney and intestine, Calbindin D28K acts as a calcium-buffering agent and alters the activity of the plasma membrane ATPase. In neuronal cells, Calbindin D28K modulates calcium channel activity, calcium transients and intrinsic neuronal firing activity. Also, Calbindin D28K has been implicated to play a role in apoptosis and microtubule function.

### Research Areas

Neuroscience

### Known Applications & Suggested Dilutions

Immunohistochemistry (Formalin-fixed) (1-2 $\mu$ g/ml for 30 minutes at RT), (Staining of formalin-fixed tissues requires heating tissue sections in 10mM Tris with 1mM EDTA, pH 9.0, for 45 min at 95 $\pm$ degC followed by cooling at RT for 20 minutes), Optimal dilution for a specific application should be determined.

### Limitations and Warranty

This antibody is available for research use only and is not approved for use in diagnosis.

There are no warranties, expressed or implied, which extend beyond this description. Company is not liable for any personal injury or economic loss resulting from this product.

### Supplied As

200 $\mu$ g/ml of Ab purified from Bioreactor Concentrate by Protein A/G. Prepared in 10mM PBS with 0.05% BSA & 0.05% azide. Also available WITHOUT BSA & azide at 1.0mg/ml.

### Storage and Stability

Antibody with azide - store at 2 to 8 $^{\circ}$ C. Antibody without azide - store at -20 to -80 $^{\circ}$ C. Antibody is stable for 24 months. Non-hazardous. No MSDS required.