

Recombinant Desmocollin-2/3 Antibody

Rabbit Monoclonal Antibody [Clone DSC2/9165R]

Catalog No	Format	Size
1824-RBM4-P0	Purified Ab with BSA and Azide at 200ug/ml	20 ug
1824-RBM4-P1	Purified Ab with BSA and Azide at 200ug/ml	100 ug
1824-RBM4-P1ABX	Purified Ab WITHOUT BSA and Azide at 1.0mg/ml	100 ug

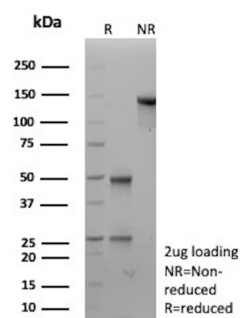
Applications	Tested Dillution	Note
Immunohistochemistry (IHC)	1-2ug/ml	30 min at RT. Staining of formalin-fixed tissues requires heating tissue sections in 10mM Tris with 1mM EDTA, pH 9.0, for 45 min at 95°C followed by cooling at RT for 20 minutes
Western Blot (WB)	2-4ug/ml	

Product Details

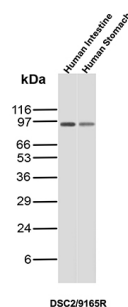
Clone	DSC2/9165R
Gene Name	DSC2
Immunogen	Recombinant full-length human DSC2 protein
Host	Rabbit
Clonality	Monoclonal
Isotype / Light Chain	IgG / Kappa
Mol. Weight of Antigen	110kDa (DSC2); 100kDa (DSC3)
Cellular Localization	Cell surface
Species Reactivity	Human
Positive Control	HeLa cells. Human esophagus or skin tissue. Intestine, Stomach.

**Optimal dilution for a specific application should be determined.*

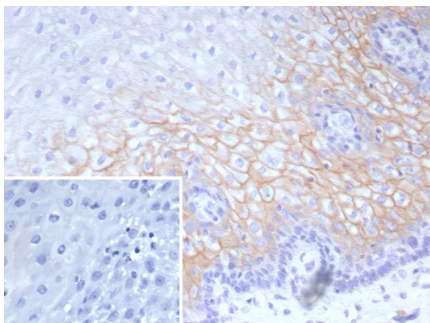
Product Images for Recombinant Desmocollin-2/3 Antibody



SDS-PAGE Analysis of Purified Desmocollin-2/3 Recombinant Rabbit Monoclonal Antibody (DSC2/9165R). Confirmation of Purity and Integrity of Antibody.



Western blot analysis of Human Intestine and Human Stomach lysates using Desmocollin-2/3 Recombinant Rabbit Monoclonal Antibody (DSC2/9165R).



Formalin-fixed, paraffin-embedded human esophagus stained with Desmocollin-2/3 Recombinant Rabbit Monoclonal Antibody (DSC2/9165R). Inset: PBS instead of primary antibody; secondary only negative control.

Specificity & Comments

Desmosomes are intercellular adhering junctions that represent cell surface attachment sites for intermediate filament. The desmosome is subdivided into two regions. The plaque region lies adjacent to the plasma, and is believed to contain molecules that attach the intermediate filament cytoskeleton to the desmosome. The core region is composed of transmembrane glycoproteins that are thought to mediate cell-cell adhesion. Desmogleins and desmocollins are the main desmosomal transmembrane proteins. These desmosomal glycoproteins belong to the members of the cadherin family of adhesion molecules. Three different isoforms of both desmogleins and desmocollins have been identified, named as desmoglein 1-3 and desmocollins. Desmosomal cadherins showed differentiation-specific expression in the human epidermis, although the functional significance of this differential expression is not fully understood. Desmocollin-1 can be found in the upper layers. The expression of desmocollin-2 varies in the basal and suprabasal layers. And desmocollin-3 is expressed more evenly throughout the suprabasal layers.

Limitations and Warranty

This antibody is available for research use only and is not approved for use in diagnosis. There are no warranties, expressed or implied, which extend beyond this description. Company is not liable for any personal injury or economic loss resulting from this product.

Supplied As

200ug/ml of Ab purified from Bioreactor Concentrate by Protein A/G. Prepared in 10mM PBS with 0.05% BSA & 0.05% azide. Also available WITHOUT BSA & azide at 1.0mg/ml.

Storage and Stability

Antibody with azide - store at 2 to 8°C. Antibody without azide - store at -20 to -80°C. Antibody is stable for 24 months. Non-hazardous. No MSDS required.

Research Areas

Developmental Biology