

CD34 (Hematopoietic Stem Cell & Endothelial Marker) Antibody

Mouse Monoclonal Antibody [Clone ICO-115]

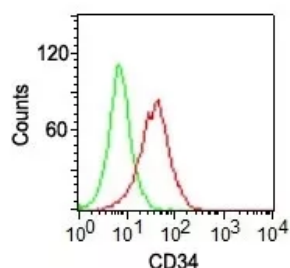
Catalog No	Format	Size
------------	--------	------

Applications	Tested Dillution
Flow Cytometry (Flow)	1-2ug/million cells
Immunofluorescence (IF)	1-3ug/ml

Product Details	
Clone	ICO-115
Gene Name	CD34
Immunogen	Blast cells of a chronic myeloid leukemia patient
Host	Mouse
Clonality	Monoclonal
Isotype / Light Chain	IgG1 / Kappa
Mol. Weight of Antigen	90-110kDa
Cellular Localization	Cell surface
Species Reactivity	Human, Rat
Positive Control	KG-1 cells. Human tonsil or angiosarcoma.

**Optimal dilution for a specific application should be determined.*

Product Images for CD34 (Hematopoietic Stem Cell & Endothelial Marker) Antibody



Flow cytometry of KG-1 cells using CD34 Monoclonal Antibody (ICO-115) (red) and isotype control Ab (green).

Specificity & Comments

This antibody recognizes a carbohydrate epitope on a single chain, transmembrane, heavily glycosylated protein of 90-120kDa, which is identified as CD34 (VI international workshop on human differentiation antigens). Its expression is a hallmark for identifying pluripotent hematopoietic stem or progenitor cells. Its expression is gradually lost as lineage committed progenitors differentiate. CD34 is a marker of choice for staining blasts in acute myeloid leukemia. In addition, it is expressed by soft tissue tumors, such as solitary fibrous tumor and gastrointestinal stromal tumor. CD34 expression is also found in vascular endothelium. Additionally, it appears that proliferating endothelial cells overexpress this molecule than the non-proliferating endothelial cells. Anti-CD34 labels 85% of angiosarcoma and Kaposi's sarcoma, but shows low specificity.

Research Areas

Hypoxia, Immunology, Endothelial Cell Marker, Hematopoietic Stem Cells, Mesenchymal Stem Cell Differentiation

Known Applications & Suggested Dilutions

Flow Cytometry (5ul per test per one million cells or 5ul per 100ul of whole blood); Immunofluorescence (1:50-1:100) Optimal dilution for a specific application should be determined.

Limitations and Warranty

This antibody is available for research use only and is not approved for use in diagnosis.

There are no warranties, expressed or implied, which extend beyond this description. Company is not liable for any personal injury or economic loss resulting from this product.

Supplied As

Antibody Purified from Bioreactor Concentrate by Protein A/G and conjugated to various reporter molecules. Prepared in 10mM PBS with 0.05% BSA and 0.05% azide. Contact us if you require this Ab in a different format.

Storage and Stability

Antibody with azide - store at 4 to 8°C. Antibody is stable for 24 months. Non-hazardous. No MSDS required.
