

## PTPRU Antibody

Mouse Monoclonal Antibody [Clone PTPRU/7616]

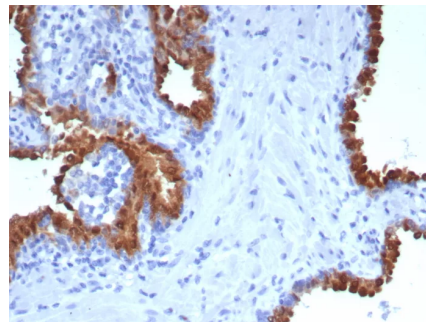
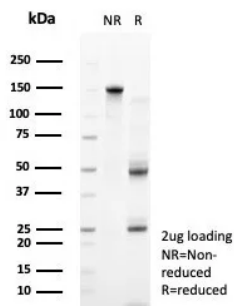
Catalog No	Format	Size
10076-MSM3-P0	Purified Ab with BSA and Azide at 200ug/ml	20 ug
10076-MSM3-P1	Purified Ab with BSA and Azide at 200ug/ml	100 ug
10076-MSM3-P1ABX	Purified Ab WITHOUT BSA and Azide at 1.0mg/ml	100 ug

Applications	Tested Dillution	Note
Immunohistochemistry (IHC)	1-2ug/ml	30 min at RT. Staining of formalin-fixed tissues requires heating tissue sections in 10mM Tris with 1mM EDTA, pH 9.0, for 45 min at 95°C followed by cooling at RT for 20 minutes

Product Details	
Clone	PTPRU/7616
Gene Name	PTPRU
Immunogen	Recombinant fragment (around aa1-200) of human PTPRU protein (exact sequence is proprietary)
Host	Mouse
Clonality	Monoclonal
Isotype / Light Chain	IgG2 / Kappa
Mol. Weight of Antigen	162kDa
Cellular Localization	Cell junction, Cell membrane
Species Reactivity	Human
Positive Control	colon or skeletal muscle. Human brain pancreas

\*Optimal dilution for a specific application should be determined.

### Product Images for PTPRU Antibody



SDS-PAGE Analysis of Purified PTPRU Mouse Monoclonal Antibody (PTPRU/7616). Confirmation of Purity and Integrity of Antibody.

Formalin-fixed, paraffin-embedded human prostate stained with PTPRU Mouse Monoclonal Antibody (PTPRU/7616). HIER: Tris/EDTA, pH9.0, 45min. 2°C: HRP-polymer, 30min. DAB, 5min.

### Specificity & Comments

Protein tyrosine phosphatases, or PTPs, are type I transmembrane proteins, membrane associated proteins or proteins localized in nuclei. Examples of transmembrane PTPs are LAR, PTPa, PTPb, PTPg, PTPd, PTPe, PTPz, PTPk, PTPm and PTPy. Transmembrane PTPs play diverse roles in a variety of cellular processes during development and in adult tissues. PTPy, also known as PTPRU, FMI, PCP-2, PTP-J, PTPRO, PTP-PI, PTPPSI or GLEPP1, is a receptor-type PTP containing a transmembrane region, two intracellular tandem catalytic domains, and an extracellular region with Ig-like and fibronectin type III-like repeats and a MAM (meprin-A5 antigen-PTPm) domain. PTPy localizes to adheren junctions and is capable of binding and dephosphorylating b-catenin thereby functioning as a negative regulator of b-catenin signaling. In addition, PTPy may function as a tumor suppressor, as its expression is silenced in a variety of tumors via methylation of its promoter.

---

### Limitations and Warranty

This antibody is available for research use only and is not approved for use in diagnosis. There are no warranties, expressed or implied, which extend beyond this description. Company is not liable for any personal injury or economic loss resulting from this product.

---

### Supplied As

200ug/ml of Ab purified from Bioreactor Concentrate by Protein A/G. Prepared in 10mM PBS with 0.05% BSA & 0.05% azide. Also available WITHOUT BSA & azide at 1.0mg/ml.

---

### Storage and Stability

Antibody with azide - store at 2 to 8°C. Antibody without azide - store at -20 to -80°C. Antibody is stable for 24 months. Non-hazardous. No MSDS required.

---

### Research Areas

Signal Transduction

---