

CD28 Antibody

Mouse Monoclonal Antibody [Clone CB28]

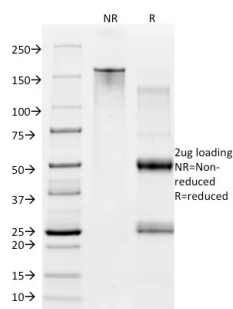
Catalog No	Format	Size
940-MSM1-PE-100T	Purified Ab Conjug	ed to PE

Applications	Tested Dillution
Flow Cytometry (Flow)	1-2ug/million cells
Immunofluorescence (IF)	1-3ug/ml

Product Details	
Clone	CB28
Gene Name	CD28
Immunogen	Recombinant human CD28 protein
Host	Mouse
Clonality	Monoclonal
Isotype / Light Chain	IgG1 / Kappa
Mol. Weight of Antigen	44kDa (monomer); 88kDa (dimer)
Cellular Localization	Cell surface
Species Reactivity	Human
Positive Control	Jurkat cells. Human lymph nodes and tonsils.

**Optimal dilution for a specific application should be determined.*

Product Images for CD28 Antibody



SDS-PAGE Analysis of Purified CD28 Mouse Monoclonal Antibody (CB28).
Confirmation of Integrity and Purity of Antibody.

Specificity & Comments

Recognizes a glycoprotein of 44-88kDa, which is identified as CD28. It is the critical T-cell co-stimulatory receptor which provides to the cell the important second activation signal by binding CD80 and CD86 that are expressed by antigen presenting cells. Besides its co-stimulation role, CD28 functions in preventing T-cells from anergic hyporesponsive state or from undergoing premature apoptotic cell death. CD28 is also expressed on human fetal NK cells and some NK cell lines, whereas on murine NK cells the CD28 expression is much broader.

Research Areas

Cancer, Cardiovascular, Immuno Oncology, Immunology, AKT Signaling, Dendritic Cell Marker, Hematopoietic Stem Cells, Immune checkpoint, Infectious Disease, Signal Transduction

Known Applications & Suggested Dilutions

Flow Cytometry: 5ul per test per one million cells (or 5ul per 100ul of whole blood); Immunofluorescence (1:50-1:100) Optimal dilution for a specific application should be determined.

Limitations and Warranty

This antibody is available for research use only and is not approved for use in diagnosis.

There are no warranties, expressed or implied, which extend beyond this description. Company is not liable for any personal injury or economic loss resulting from this product.

Supplied As

Antibody Purified from Bioreactor Concentrate by Protein A/G and conjugated to various reporter molecules. Prepared in 10mM PBS with 0.05% BSA and 0.05% azide. Contact us if you require this Ab in a different format.

Storage and Stability

Antibody with azide - store at 4 to 8°C. Antibody is stable for 24 months. Non-hazardous. No MSDS required.
