

## Beta-2 Microglobulin (Renal Failure & Tumor Marker) Antibody

Mouse Monoclonal Antibody [Clone 246-E9.E7; same as HLA.ABC.m2]

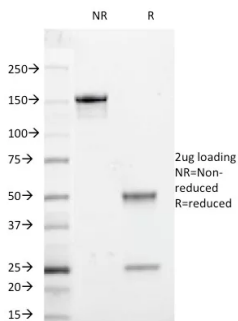
Catalog No	Format	Size
567-MSM1-P0	Purified Ab with BSA and Azide at 200ug/ml	20 ug
567-MSM1-P1	Purified Ab with BSA and Azide at 200ug/ml	100 ug
567-MSM1-P1ABX	Purified Ab WITHOUT BSA and Azide at 1.0mg/ml	100 ug

Applications	Tested Dillution	Note
Flow Cytometry (Flow)	1-2ug/million cells	
Immunofluorescence (IF)	1-3ug/ml	

Product Details	
<b>Clone</b>	246-E9.E7; same as HLA.ABC.m2
<b>Gene Name</b>	B2M
<b>Immunogen</b>	Human PBL s from a T-cell acute lymphoblastic leukemia (T-ALL) patient
<b>Host</b>	Mouse
<b>Clonality</b>	Monoclonal
<b>Isotype / Light Chain</b>	IgG2a / Kappa
<b>Mol. Weight of Antigen</b>	12kDa
<b>Species Reactivity</b>	Human
<b>Positive Control</b>	Cervix Endometrial HL-60 or HeLa cells. Melanomas and Lymphoma. Carcinoma of Stomach Kidney or Colon.

\*Optimal dilution for a specific application should be determined.

### Product Images for Beta-2 Microglobulin (Renal Failure & Tumor Marker) Antibody



SDS-PAGE Analysis of Purified Beta-2-Microglobulin Mouse Monoclonal Antibody(246-E9.E7). Confirmation of Integrity and Purity of Antibody.

### Specificity & Comments

Recognizes a protein of 12kDa, identified as beta-microglobulin. Beta--microglobulin non-covalently associates with the 44kDa chain to form the HLA Class I antigen complex. Human beta-2 microglobulin associated with HLA Class I antigens is expressed on many types of cells including lymphocytes, thymocytes, monocytes, granulocytes, platelets, endothelial cells, and epithelial cells. It is absent on erythrocytes. This MAb is specific to human beta-2 microglobulin and does not react with non-human primate cells. This antibody reacts with all cell types excluding erythrocytes. Detection of beta-2 microglobulin in body fluids has been used as a tumor marker and for monitoring patients with HIV infection.

### Limitations and Warranty

This antibody is available for research use only and is not approved for use in diagnosis. There are no warranties, expressed or implied, which extend beyond this description. Company is not liable for any personal injury or economic loss resulting from this product.

### Supplied As

200ug/ml of Ab Purified from Bioreactor Concentrate by Protein A/G. Prepared in 10mM PBS with 0.05% BSA & 0.05% azide. Also available WITHOUT BSA & azide at 1.0mg/ml.

### Storage and Stability

Antibody with azide - store at 2 to 8°C. Antibody without azide - store at -20 to -80°C. Antibody is stable for 24 months. Non-hazardous. No MSDS required.

### Research Areas

Cancer, Cardiovascular, Cytokine Signaling, Immuno Oncology, Immunology, Infectious Disease