

Recombinant HLA-DR (MHC II) Antibody

Rabbit Monoclonal Antibody [Clone HLA-DRA/6839R]

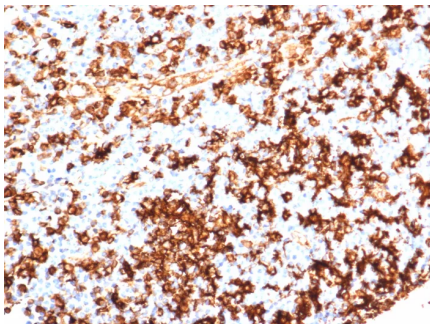
Catalog No	Format	Size
3122-RBM5-P0	Purified Ab with BSA and Azide at 200ug/ml	20 ug
3122-RBM5-P1	Purified Ab with BSA and Azide at 200ug/ml	100 ug
3122-RBM5-P1ABX	Purified Ab WITHOUT BSA and Azide at 1.0mg/ml	100 ug

Applications	Tested Dillution	Note
Immunohistochemistry (IHC)	1-2ug/ml	30 min at RT. Staining of formalin-fixed tissues requires heating tissue sections in 10mM Tris with 1mM EDTA, pH 9.0, for 45 min at 95°C followed by cooling at RT for 20 minutes

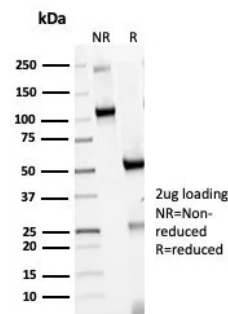
Product Details	
Clone	HLA-DRA/6839R
Gene Name	HLA-DRA
Immunogen	Recombinant fragment (around aa1-200) of human HLA-DR protein (exact sequence is proprietary)
Host	Rabbit
Clonality	Monoclonal
Isotype / Light Chain	IgG / Kappa
Mol. Weight of Antigen	~28kDa (beta chain)
Cellular Localization	Cell surface.
Species Reactivity	Human
Positive Control	Human tonsil or lymph node.

*Optimal dilution for a specific application should be determined.

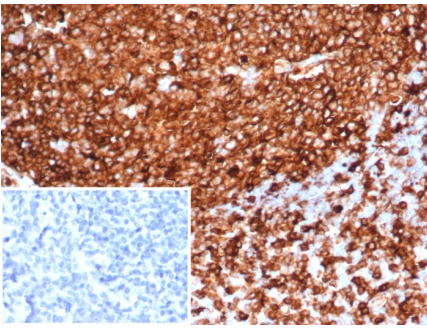
Product Images for Recombinant HLA-DR (MHC II) Antibody



Formalin-fixed, paraffin-embedded human tonsil stained with HLA-DR Recombinant Rabbit Monoclonal Antibody (HLA-DRA/6839R). HIER: Tris/EDTA, pH9.0, 45min. 2°C: HRP-polymer, 30min. DAB, 5min.



SDS-PAGE Analysis of Purified HLA-DR Recombinant Rabbit Monoclonal (HLA-DRA/6839R). Confirmation of Purity and Integrity of Antibody.



Formalin-fixed, paraffin-embedded human tonsil stained with HLA-DR Recombinant Rabbit Monoclonal Antibody (HLA-DRA/6839R). Inset: PBS instead of primary antibody; secondary only negative control.

Specificity & Comments

This MAbs reacts with the beta-chain of HLA-DR antigen, a member of MHC class II molecules. It does not cross react with HLA-DP and HLA-DQ. The L243 antibody recognizes a different epitope than the HLA-DRA/6839R monoclonal antibody, and these antibodies do not cross-block binding to each other's respective epitopes. HLA-DR is a heterodimeric cell surface glycoprotein comprised of a 36kDa alpha (heavy) chain and a 28kDa beta (light) chain. It is expressed on B-cells, activated T-cells, monocytes/macrophages, dendritic cells and other non-professional APCs. In conjunction with the CD3/TCR complex and CD4 molecules, HLA-DR is critical for efficient peptide presentation to CD4+ T cells. It is an excellent histiocytic marker in paraffin sections producing intense staining. True histiocytic neoplasms are similarly positive. HLA-DR antigens also occur on a variety of epithelial cells and their corresponding neoplastic counterparts.

Limitations and Warranty

This antibody is available for research use only and is not approved for use in diagnosis. There are no warranties, expressed or implied, which extend beyond this description. Company is not liable for any personal injury or economic loss resulting from this product.

Supplied As

200ug/ml of Ab produced in HEK293 cell mammalian-based expression system. Prepared in 10mM PBS with 0.05% BSA & 0.05% azide. Also available WITHOUT BSA & azide at 1.0mg/ml.

Storage and Stability

Antibody with azide - store at 2 to 8°C. Antibody without azide - store at -20 to -80°C. Antibody is stable for 24 months. Non-hazardous. No MSDS required.

Research Areas

B Cell Markers, Cardiovascular, Cytokine Signaling, Dendritic Cell Marker, Hematopoietic Stem Cells, Immunology