

HLA-ABC (MHC I) Antibody

Mouse Monoclonal Antibody [Clone Bra-23/9]

Catalog No	Format	Size
3105-MSM2-P0	Purified Ab with BSA and Azide at 200ug/ml	20 ug
3105-MSM2-P1	Purified Ab with BSA and Azide at 200ug/ml	100 ug
3105-MSM2-P1ABX	Purified Ab WITHOUT BSA and Azide at 1.0mg/ml	100 ug

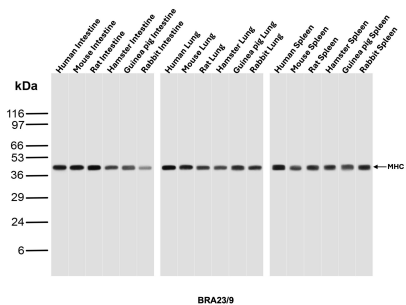
Applications	Tested Dillution	Note
Western Blot (WB)	2-4ug/ml	

Product Details

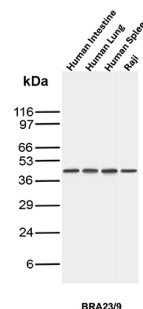
Clone	Bra-23/9
Gene Name	HLA-B
Immunogen	Human REH cells (pre-B leukaemia cell line)
Host	Mouse
Clonality	Monoclonal
Isotype / Light Chain	IgG2a / Kappa
Mol. Weight of Antigen	~41kDa
Cellular Localization	Cell surface
Species Reactivity	Human, Mouse, Non-Human primates
Positive Control	Human Intestine, Human Lung, Human Spleen or Raji

*Optimal dilution for a specific application should be determined.

Product Images for HLA-ABC (MHC I) Antibody



Western blot analysis of Intestine, Lung and Spleen tissue lysates of different species using MHC I Mouse Monoclonal Antibody (BRA23/9).



Western blot analysis of Human Intestine, Human Lung, Human Spleen and Raji lysates using MHC I Mouse Monoclonal Antibody (BRA23/9).

Specificity & Comments

Reacts with a monomorphic determinant of human major histocompatibility (MHC) class I antigens (HLA-A, B and C). Immunoprecipitation of lactoperoxidase radioiodinated cell surface proteins and surface sialoglycoproteins radiolabeled by sodium metaperiodate/tritiated sodium borohydride technique confirmed the structure gp44,p12 (consisting of a 44kDa glycopeptide linked with a non-glycosylated 12kDa peptide) typical for MHC class I antigen(s) as a structure recognized by Bra23/9. Human MHC class I antigens are expressed constitutively on all nucleated cells lymphocytes such as lymphocytes, thymocytes, granulocytes, and bone marrow cells and are absent on erythrocytes. MHC class I antigens play a role in class I MHC-associated antigen presentation, inhibition of NK cell cytotoxicity, tumor surveillance, and tissue allotransplantation.

Supplied As

200ug/ml of Ab produced in CHO cell mammalian-based expression system. Prepared in 10mM PBS with 0.05% BSA & 0.05% azide. Also available WITHOUT BSA & azide at 1.0mg/ml.

Storage and Stability

Antibody with azide - store at 2 to 8°C. Antibody without azide - store at -20 to -80°C. Antibody is stable for 24 months. Non-hazardous. No MSDS required.

Research Areas

Immunology, Infectious Disease

Limitations and Warranty

This antibody is available for research use only and is not approved for use in diagnosis. There are no warranties, expressed or implied, which extend beyond this description. Company is not liable for any personal injury or economic loss resulting from this product.
