

## Carcinoembryonic Antigen (CEA) / CD66 Antibody

Mouse Monoclonal Antibody [Clone C66/1009]

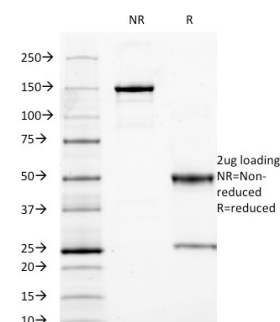
Catalog No	Format	Size
1048-MSM5-CF488-100T	Purified Ab conjugated to CF488	0.5 ml at 100ug/ml

Applications	Tested Dillution	Note
Flow Cytometry (Flow)	1-2ug/million cells	
Immunofluorescence (IF)	1-3ug/ml	

Product Details	
<b>Clone</b>	C66/1009
<b>Gene Name</b>	CEACAM5
<b>Immunogen</b>	Recombinant full-length human CEA protein
<b>Host</b>	Mouse
<b>Clonality</b>	Monoclonal
<b>Isotype / Light Chain</b>	IgG2a / Kappa
<b>Mol. Weight of Antigen</b>	80-200kDa
<b>Cellular Localization</b>	Cell membrane, Cell surface, Cytoplasm
<b>Species Reactivity</b>	Human
<b>Positive Control</b>	MCF7 or 293T cells. Human colon carcinoma.

*\*Optimal dilution for a specific application should be determined.*

### Product Images for Carcinoembryonic Antigen (CEA) / CD66 Antibody



SDS-PAGE Analysis of Purified CEA Mouse Monoclonal Antibody (C66/1009).  
Confirmation of Purity and Integrity of Antibody.

### Specificity & Comments

This antibody recognizes proteins of 80-200kDa, identified as different members of CEA family. CEA is synthesized during development in the fetal gut and is re-expressed in increased amounts in intestinal carcinomas and several other tumors. This MAb does not react with nonspecific cross-reacting antigen (NCA) and with human polymorphonuclear leucocytes. It shows no reaction with a variety of normal tissues and is suitable for staining of formalin/paraffin tissues. CEA is not found in benign glands, stroma, or malignant prostatic cells. Antibody to CEA is useful in detecting early foci of gastric carcinoma and in distinguishing pulmonary adenocarcinomas (60-70% are CEA+) from pleural mesotheliomas (rarely or weakly CEA+). Anti-CEA positivity is seen in adenocarcinomas from the lung, colon, stomach, esophagus, pancreas, gallbladder, urachus, salivary gland, ovary, and endocervix.

### Supplied As

Antibody purified from Bioreactor Concentrate by Protein A/G and conjugated to various reporter molecules. Prepared in 10mM PBS with 0.05% BSA and 0.05% azide. Contact us if you require this Ab in a different format.

### Storage and Stability

Antibody with azide - store at 4 to 8°C. Antibody is stable for 24 months. Non-hazardous. No MSDS required.

### Limitations and Warranty

This antibody is available for research use only and is not approved for use in diagnosis. There are no warranties, expressed or implied, which extend beyond this description. Company is not liable for any personal injury or economic loss resulting from this product.

---