

Estrogen Receptor (Marker of Estrogen Dependence) Antibody

Mouse Monoclonal Antibody [Clone AER311]

Catalog No	Format	Size
2099-MSM6-P0	Purified Ab with BSA and Azide at 200ug/ml	20 ug
2099-MSM6-P1	Purified Ab with BSA and Azide at 200ug/ml	100 ug
2099-MSM6-P1ABX	Purified Ab WITHOUT BSA and Azide at 1.0mg/ml	100 ug

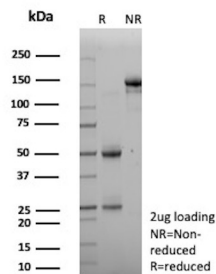
Applications	Tested Dillution	Note
Flow Cytometry (Flow)	1-2ug/million cells	
Immunofluorescence (IF)	1-3ug/ml	

Product Details

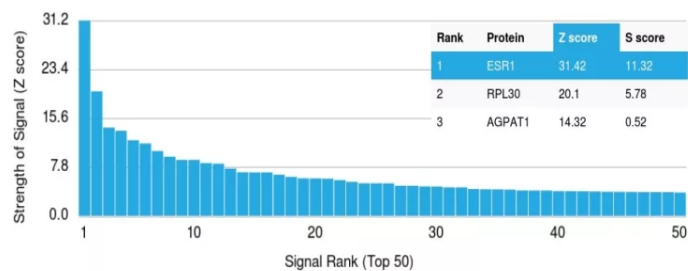
Clone	AER311
Gene Name	ESR1
Immunogen	ER purified from cow uterus
Host	Mouse
Clonality	Monoclonal
Isotype / Light Chain	IgG2a / Kappa
Mol. Weight of Antigen	~67kDa
Cellular Localization	Nucleus
Species Reactivity	Cow, Human, Mouse, Pig, Rat
Positive Control	MCF-7 Cells or Breast Carcinomas

*Optimal dilution for a specific application should be determined.

Product Images for Estrogen Receptor (Marker of Estrogen Dependence) Antibody



SDS-PAGE Analysis of Purified ESR1 Mouse Monoclonal Antibody(AER311). Confirmation of Purity and Integrity of Antibody.



Analysis of Protein Array containing more than 19,000 full-length human proteins using Estrogen Receptor, alpha Mouse Monoclonal Antibody (AER311). Z- and S- Score: The Z-score represents the strength of a signal that a monoclonal antibody (MAb) (in combination with a fluorescently-tagged anti-IgG secondary antibody) produces when binding to a particular protein on the HuProt™ array. Z-scores are described in units of standard deviations (SD's) above the mean value of all signals generated on that array. If targets on HuProt™ are arranged in descending order of the Z-score, the S-score is the difference (also in units of SD's) between the Z-score. S-score therefore represents the relative target specificity of a MAb to its intended target. A MAb is considered to be specific to its intended target, if the MAb has an S-score of at least 2.5. For example, if a MAb binds to protein X with a Z-score of 43 and to protein Y with a Z-score of 14, then the S-score for the binding of that MAb to protein X is equal to 29.

Specificity & Comments

This MAb is specific to ER alpha and shows minimal cross-reaction with other members of the family. Epitope of this MAb is mapped between aa495-595 of E/F domain. ER is an important regulator of growth and differentiation in the mammary gland. Presence of ER in breast tumors indicates an increased likelihood of response to anti-estrogen (e.g. tamoxifen) therapy.

Limitations and Warranty

This antibody is available for research use only and is not approved for use in diagnosis. There are no warranties, expressed or implied, which extend beyond this description. Company is not liable for any personal injury or economic loss resulting from this product.

Supplied As

200ug/ml of Ab purified from Bioreactor Concentrate by Protein A/G. Prepared in 10mM PBS with 0.05% BSA & 0.05% azide. Also available WITHOUT BSA & azide at 1.0mg/ml.

Storage and Stability

Antibody with azide - store at 2 to 8°C. Antibody without azide - store at -20 to -80°C. Antibody is stable for 24 months. Non-hazardous. No MSDS required.

Research Areas

Breast Cancer, Cardiovascular, Infectious Disease, Ovarian Cancer, Signal Transduction, Transcription Factors
