

Integrin alpha V + beta 6 Antibody

Rat Monoclonal Antibody [Clone AvB6 53a.2]

Catalog No	Format	Size
RTM1-2500-P0	Purified Ab with BSA and Azide at 200ug/ml	20 ug
RTM1-2500-P1	Purified Ab with BSA and Azide at 200ug/ml	100 ug
RTM1-2500-P1ABX	Purified Ab WITHOUT BSA and Azide at 1.0mg/ml	100 ug

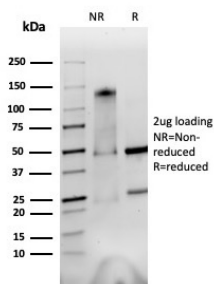
Applications	Tested Dillution	Note
Flow Cytometry (Flow)	1-2ug/million cells	
Immunofluorescence (IF)	1-3ug/ml	
Western Blot (WB)	2-4ug/ml	

Product Details

Clone	AvB6 53a.2
Gene Name	ITGAV
Immunogen	Mouse fibroblasts retrovirally infected with cDNA to human beta6; Cells expressed a mouse/human avb6 chimera.
Host	Rat
Clonality	Monoclonal
Isotype / Light Chain	IgG2a / Kappa
Mol. Weight of Antigen	150-160kDa under non-reducing conditions. Under reducing conditions cleaved into 2 bands of ~125-130kDa +20-25kDa
Cellular Localization	Cell junction, Cell membrane, Focal adhesion
Species Reactivity	Human
Positive Control	Squamous cell carcinoma cells. A375M melanoma cell line. A549 cell line.

*Optimal dilution for a specific application should be determined.

Product Images for Integrin alpha V + beta 6 Antibody



SDS-PAGE Analysis of Purified alpha v beta 6 Rat Monoclonal Antibody (AvB6 53a.2).
Confirmation of Purity and Integrity of Antibody.

Specificity & Comments

Integrins are heterodimers composed of noncovalently associated transmembrane α and β subunits. The 16 α and 8 β subunits heterodimerize to produce more than 20 different receptors. Most integrin receptors bind ligands that are components of the extracellular matrix, including Fibronectin, Collagen and Vitronectin. Certain integrins can also bind to soluble ligands such as Fibrinogen, or to counterreceptors on adjacent cells such as the intracellular adhesion molecules (ICAMs), leading to aggregation of cells. Ligands serve to cross-link or cluster integrins by binding to adjacent integrin receptors; both receptor clustering and ligand occupancy are necessary for the activation of integrin-mediated responses. In addition to mediating cell adhesion and cytoskeletal organization, integrins function as signaling receptors. Signals transduced by integrins play a role in many biological processes, including cell growth, differentiation, migration and apoptosis.

Limitations and Warranty

This antibody is available for research use only and is not approved for use in diagnosis. There are no warranties, expressed or implied, which extend beyond this description. Company is not liable for any personal injury or economic loss resulting from this product.

Supplied As

200ug/ml of Ab purified from Bioreactor Concentrate by Protein A/G. Prepared in 10mM PBS with 0.05% BSA & 0.05% azide. Also available WITHOUT BSA & azide at 1.0mg/ml.

Storage and Stability

Antibody with azide - store at 2 to 8 °C. Antibody without azide - store at -20 to -80 °C. Antibody is stable for 24 months. Non-hazardous. No MSDS required.

Research Areas

Immunology, Lung Cancer, Signal Transduction
