

CD4, Mouse (T-Cell Marker) Antibody

Rat Monoclonal Antibody [Clone GK1.5]

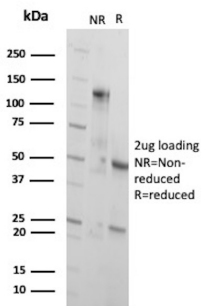
Catalog No	Format	Size
RTM1-2009-P0	Purified Ab with BSA and Azide at 200ug/ml	20 ug
RTM1-2009-P1	Purified Ab with BSA and Azide at 200ug/ml	100 ug
RTM1-2009-P1ABX	Purified Ab WITHOUT BSA and Azide at 1.0mg/ml	100 ug

Applications	Tested Dillution	Note
Flow Cytometry (Flow)	1-2ug/million cells	
Immunofluorescence (IF)	1-3ug/ml	

Product Details	
Clone	GK1.5
Immunogen	Mouse CTL clone V4
Host	Rat
Clonality	Monoclonal
Isotype / Light Chain	IgG2b / Kappa
Mol. Weight of Antigen	55kDa
Cellular Localization	Cell membrane
Species Reactivity	Mouse
Positive Control	Spleen, Thymus or Lymph Node.

*Optimal dilution for a specific application should be determined.

Product Images for CD4, Mouse (T-Cell Marker) Antibody



SDS-PAGE Analysis of Purified T-cell surface glycoprotein CD4 Rat Monoclonal Antibody (GK1.5). Confirmation of Purity and Integrity of Antibody.

Specificity & Comments

CD4 is a member of the Ig superfamily, primarily expressed on most thymocytes, a subset of T cells, and weakly on macrophages and dendritic cells. It acts as a coreceptor with the TCR during T cell activation and thymic differentiation by binding MHC class II and associating with the protein tyrosine kinase, lck. CD4 is expressed by the majority of thymocytes, most helper T cells, a subset of NK-T cells and weakly by dendritic cells and macrophages. CD4 plays an important role in the development of T cells and is required for mature T cells to function optimally. This antibody blocks helper T cell responses to MHC class II antigens, including cytolysis, proliferation, allogeneic B cell help, and release of lymphokines.

Limitations and Warranty

This antibody is available for research use only and is not approved for use in diagnosis. There are no warranties, expressed or implied, which extend beyond this description. Company is not liable for any personal injury or economic loss resulting from this product.

Supplied As

200ug/ml of Ab Purified from Bioreactor Concentrate by Protein A/G. Prepared in 10mM PBS with 0.05% BSA & 0.05% azide. Also available WITHOUT BSA & azide at 1.0mg/ml.

Storage and Stability

Antibody with azide - store at 2 to 8°C. Antibody without azide - store at -20 to -80°C. Antibody is stable for 24 months. Non-hazardous. No MSDS required.