

## Recombinant Nuclear Antigen (Pan-Nuclear Marker) Antibody

Rabbit Monoclonal Antibody [Clone NM2984R]

Catalog No	Format	Size
RBM5-2984-P0	Purified Ab with BSA and Azide at 200ug/ml	20 ug
RBM5-2984-P1	Purified Ab with BSA and Azide at 200ug/ml	100 ug
RBM5-2984-P1ABX	Purified Ab WITHOUT BSA and Azide at 1.0mg/ml	100 ug

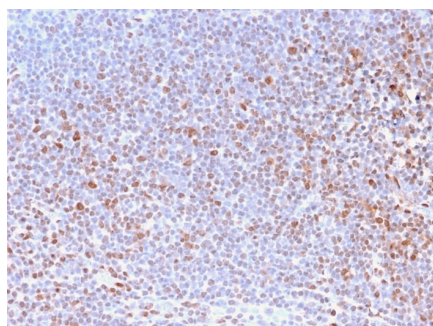
Applications	Tested Dillution	Note
Immunohistochemistry (IHC)	1-2ug/ml	30 min at RT. Staining of formalin-fixed tissues requires heating tissue sections in 10mM Tris with 1mM EDTA, pH 9.0, for 45 min at 95°C followed by cooling at RT for 20 minutes

### Product Details

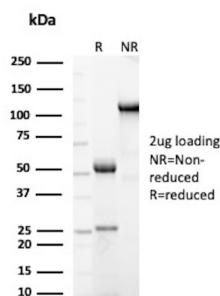
Clone	NM2984R
Immunogen	Nuclei of HL60 cells
Host	Rabbit
Clonality	Monoclonal
Isotype / Light Chain	IgG / Kappa
Mol. Weight of Antigen	Not Known
Cellular Localization	Nucleus
Species Reactivity	Human, Mouse, Rat
Positive Control	All human cells. Tonsil.

*\*Optimal dilution for a specific application should be determined.*

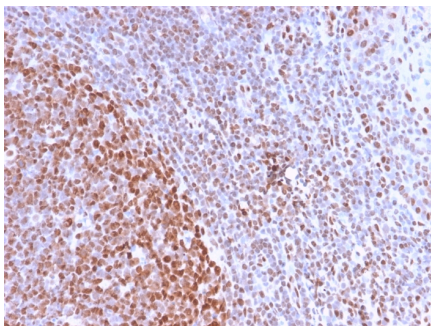
### Product Images for Recombinant Nuclear Antigen (Pan-Nuclear Marker) Antibody



Formalin-fixed, paraffin-embedded human Tonsil stained with Pan-Nuclear Antigen Monoclonal Antibody (NM2984R).



SDS-PAGE Analysis of Purified Nuclear Antigen Rabbit Monoclonal Antibody (NM2984R). Confirmation of Purity and Integrity of Antibody.



Formalin-fixed, paraffin-embedded human Tonsil stained with Pan-Nuclear Antigen Monoclonal Antibody (NM2984R).

---

### Specificity & Comments

This MAb is an excellent marker for all nuclei in cells in tissues. It is a part of a new panel of reagents, which recognizes subcellular organelles or compartments of cells. These markers may be useful in identification of these organelles in cells, tissues, and biochemical preparations. This MAb recognizes an antigen associated with the nuclei in all cells. It can be used to stain the nuclei in cell or tissue preparations and can be used as a nuclear marker in subcellular fractions. It produces a speckled pattern in normal and malignant cells and may be used to stain the nuclei of cells in fixed or frozen tissue sections. It can also be used with paraformaldehyde fixed frozen tissue or cell preparations.

---

### Limitations and Warranty

This antibody is available for research use only and is not approved for use in diagnosis. There are no warranties, expressed or implied, which extend beyond this description. Company is not liable for any personal injury or economic loss resulting from this product.

---

### Supplied As

200ug/ml of Ab Purified from Bioreactor Concentrate by Protein A/G. Prepared in 10mM PBS with 0.05% BSA & 0.05% azide. Also available WITHOUT BSA & azide at 1.0mg/ml.

---

### Storage and Stability

Antibody with azide - store at 2 to 8°C. Antibody without azide - store at -20 to -80°C. Antibody is stable for 24 months. Non-hazardous. No MSDS required.

---