

## Recombinant Cytokeratin, pan (Epithelial Marker) Antibody

Rabbit Monoclonal Antibody [Clone Cocktail PCK/4933R]

| Catalog No       | Format  | Size   |
|------------------|---|--------|
| RBM43-4933-P0    | Purified Ab with BSA and Azide at 200ug/ml    | 20 ug  |
| RBM43-4933-P1    | Purified Ab with BSA and Azide at 200ug/ml    | 100 ug |
| RBM43-4933-P1ABX | Purified Ab WITHOUT BSA and Azide at 1.0mg/ml | 100 ug |

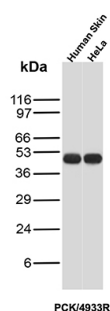
| Applications               | Tested Dillution | Note  |
|----------------------------|------------------|---|
| Immunohistochemistry (IHC) | 1-2ug/ml         | 30 min at RT. Staining of formalin-fixed tissues requires heating tissue sections in 10mM Tris with 1mM EDTA, pH 9.0, for 45 min at 95°C followed by cooling at RT for 20 minutes |
| Western Blot (WB)          | 2-4ug/ml         |   |

### Product Details

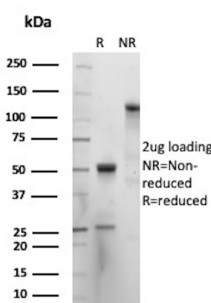
|                        |  |
|------------------------|--|
| Clone                  | Cocktail PCK/4933R   |
| Gene Name              | N/A  |
| Immunogen              | Crude cytokeratin extract prepared from RT-4 and MCF-7 cells |
| Host                   | Rabbit   |
| Clonality              | Monoclonal   |
| Isotype / Light Chain  | IgG / Kappa  |
| Mol. Weight of Antigen | 40-67kDa (Multiple)  |
| Cellular Localization  | N/A  |
| Species Reactivity     | Human  |
| Positive Control       | adeno- or squamous carcinomas (IHC)., Skin                   |

*\*Optimal dilution for a specific application should be determined.*

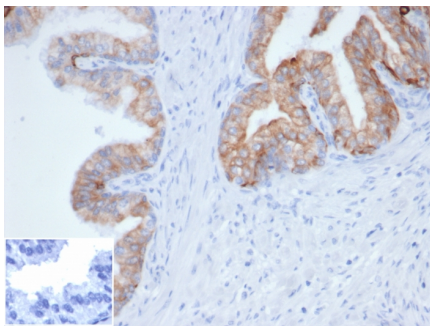
### Product Images for Recombinant Cytokeratin, pan (Epithelial Marker) Antibody



Western Blot Analysis of Human skin and HeLa lysates using Cytokeratin, pan Recombinant Rabbit Monoclonal Antibody (PCK/4933R).



SDS-PAGE Analysis of Purified N/A Recombinant Rabbit Monoclonal Antibody (Cocktail PCK/4933R). Confirmation of Purity and Integrity of Antibody.



Formalin-fixed, paraffin-embedded human prostate stained with Pan-Cytokeratin Recombinant Rabbit Monoclonal Antibody (PCK/4933R). Inset: PBS instead of primary antibody, secondary control.

### Specificity & Comments

PCK/4933R demonstrates a broad spectrum of cytokeratin reactivity. In normal tissues, PCK/4933R is reactive with most epithelial types, including bile ducts and hepatocytes in liver, bladder epithelium, breast ducts, bronchial epithelium, endometrium, intestinal epithelium of stomach, duodenum, ileum, colon, rectum, pancreas, ovarian epithelium, pancreatic acini, pituitary acini, pneumocytes, prostate, thyroid, skin (positive on the basal layer and negative on the superficial layers of squamous epithelium), and apocrine and sweat glands. In tumors, PCK/4933R is reactive with most carcinomas, including breast, transitional cell (TCC), renal cell (RCC), lung adenocarcinoma, lung small cell, lung squamous cell, endometrial, prostate, ovarian, hepatocellular (HCC), colorectal CA, stomach and thyroid. It is negative in certain normal tissues, including brain, lymphocytes and all cells of hematolymphoid origin, muscle, brain, nerves, endothelium and in certain tumors including most melanomas, sarcomas, lymphomas, primitive neuroectodermal tumors (PNET)/Ewings and gastrointestinal stromal tumors (GIST). Positivity has been seen on some dendritic cells in lymph nodes, some endothelia, and some muscle cells.

### Limitations and Warranty

This antibody is available for research use only and is not approved for use in diagnosis. There are no warranties, expressed or implied, which extend beyond this description. Company is not liable for any personal injury or economic loss resulting from this product.

### Supplied As

200ug/ml of Ab purified from Bioreactor Concentrate by Protein A/G. Prepared in 10mM PBS with 0.05% BSA & 0.05% azide. Also available WITHOUT BSA & azide at 1.0mg/ml.

### Storage and Stability

Antibody with azide - store at 2 to 8 °C. Antibody without azide - store at -20 to -80 °C. Antibody is stable for 24 months. Non-hazardous. No MSDS required.